

Environment and culture in an island community: some insights for re-building the framework of Cultural Ecosystem Services

Aoi Sugimoto, Japan Fisheries Research & Education Agency

Hiroe Ishihara, The University of Tokyo

Culture ?

CULTURE

I ♥ CULTURE

CULTURE is the sum of all the forms of art.



Definition of 'culture'

Anthropology :

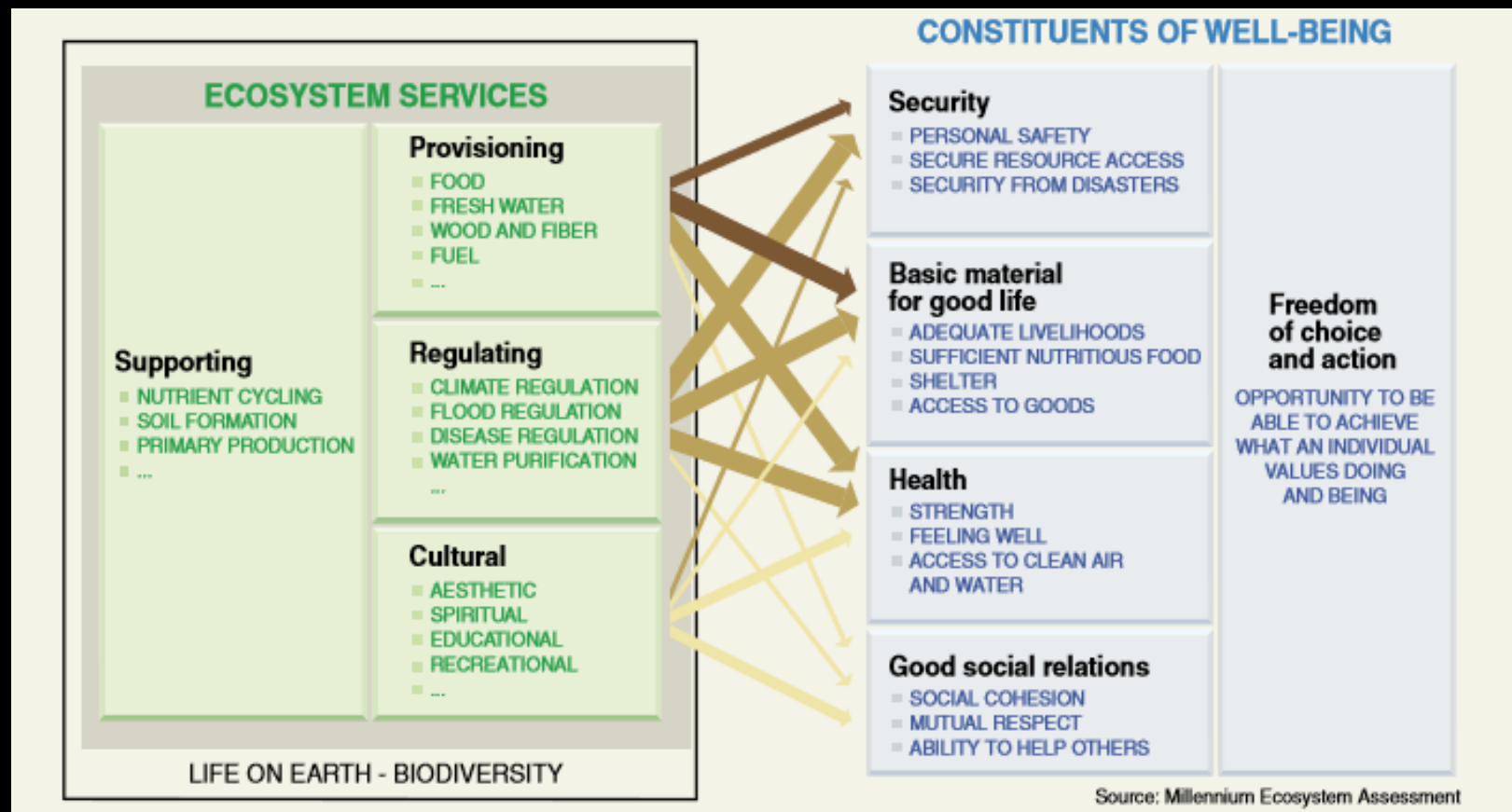
social, communicative and productive process (Ingold 2000)

Sociology:

a set of shared understandings and practices (Elder-Vass 2012)

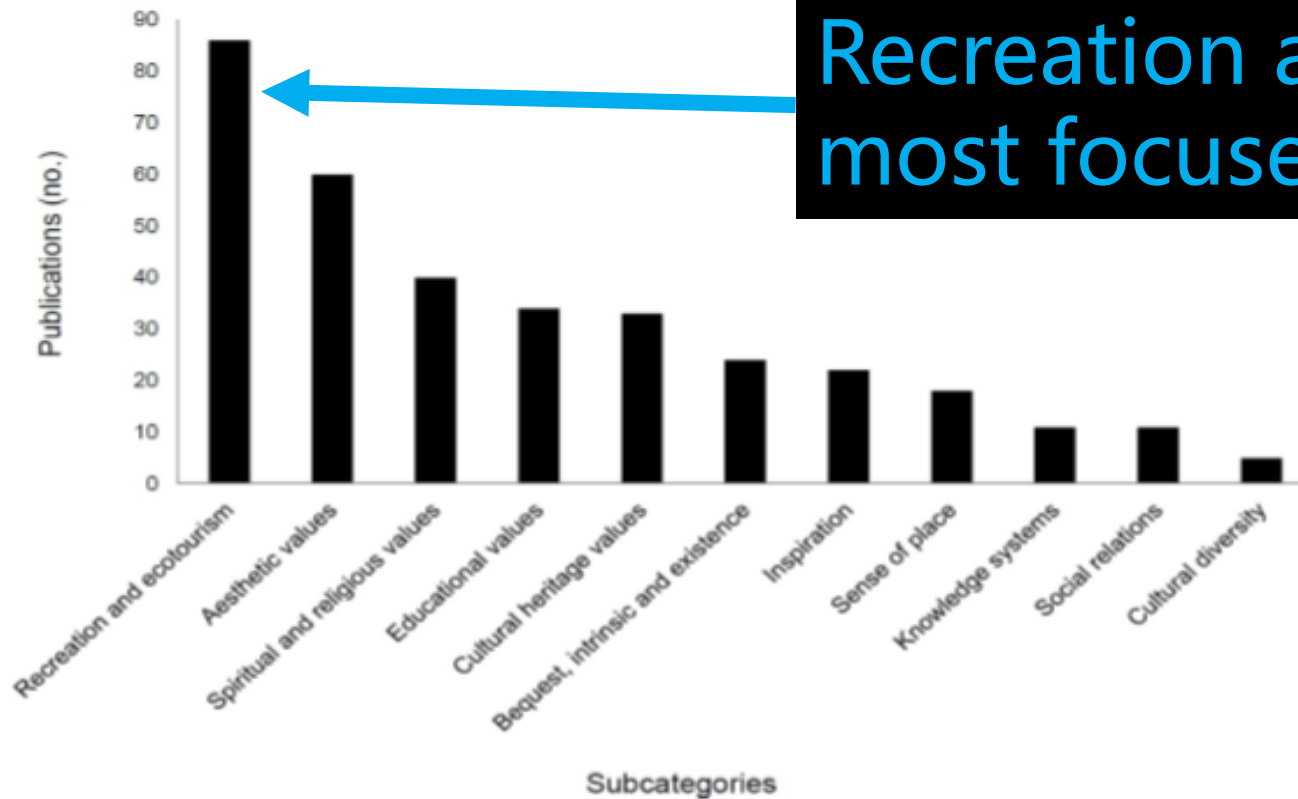
Definition of Cultural Ecosystem Services

- Cultural ecosystem services (CES):
nonmaterial benefits people obtain from ecosystems



CES literature's focus

Fig. 3. Number of publications investigating different subcategories of cultural ecosystem services. Publications could have no entries or multiple entries if, respectively, no or multiple subcategories were addressed.

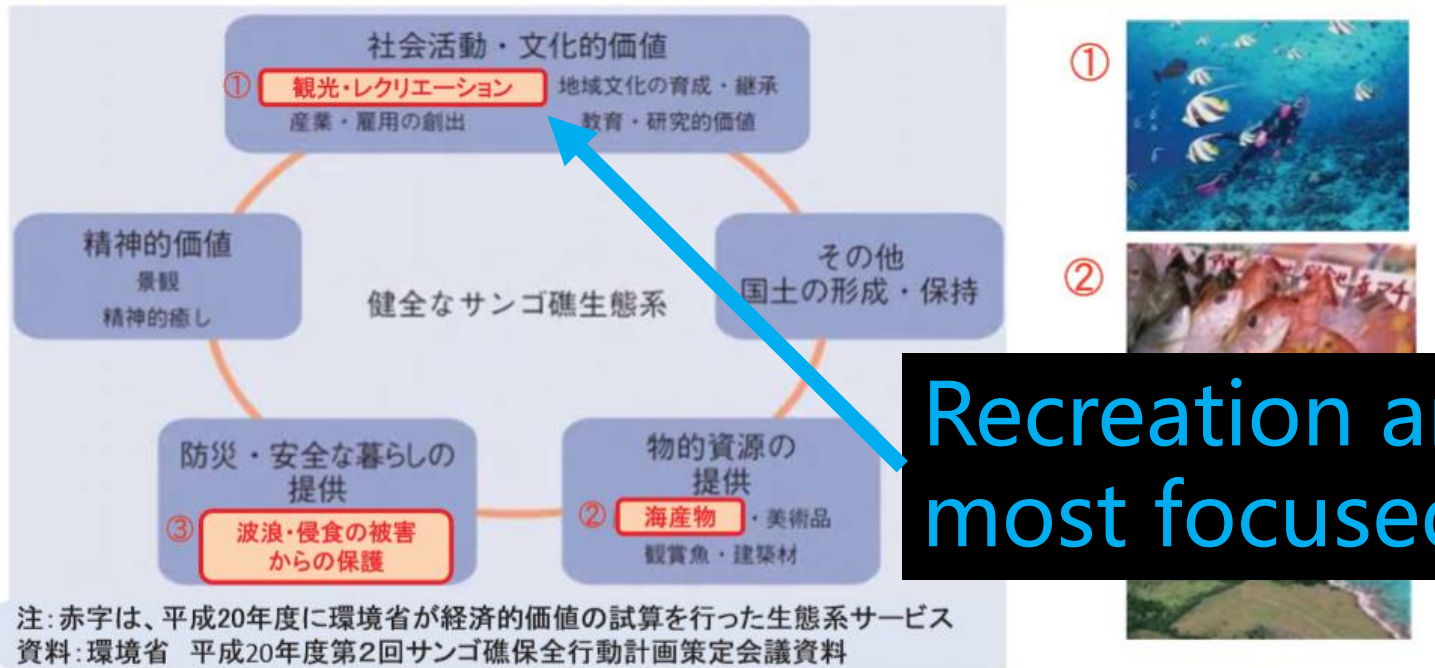


Recreation and ecotourism are the most focused services as 'cultural'

(Milcu 2013)

Assessment of Japan CES

日本のサンゴ礁の生態系サービスの経済評価の試算



Recreation and ecotourism are the most focused services as 'cultural'

サンゴ礁の生態系サービス	経済的価値 (億円/年)
① 観光・レクリエーションの提供	2,399 (うち沖縄2,324億円)
② 商業用海産物の提供	107
③ 波浪・侵食の被害からの保護	75~839

one part of my PhD work :
important elements of notion of community from local residents'
perspective

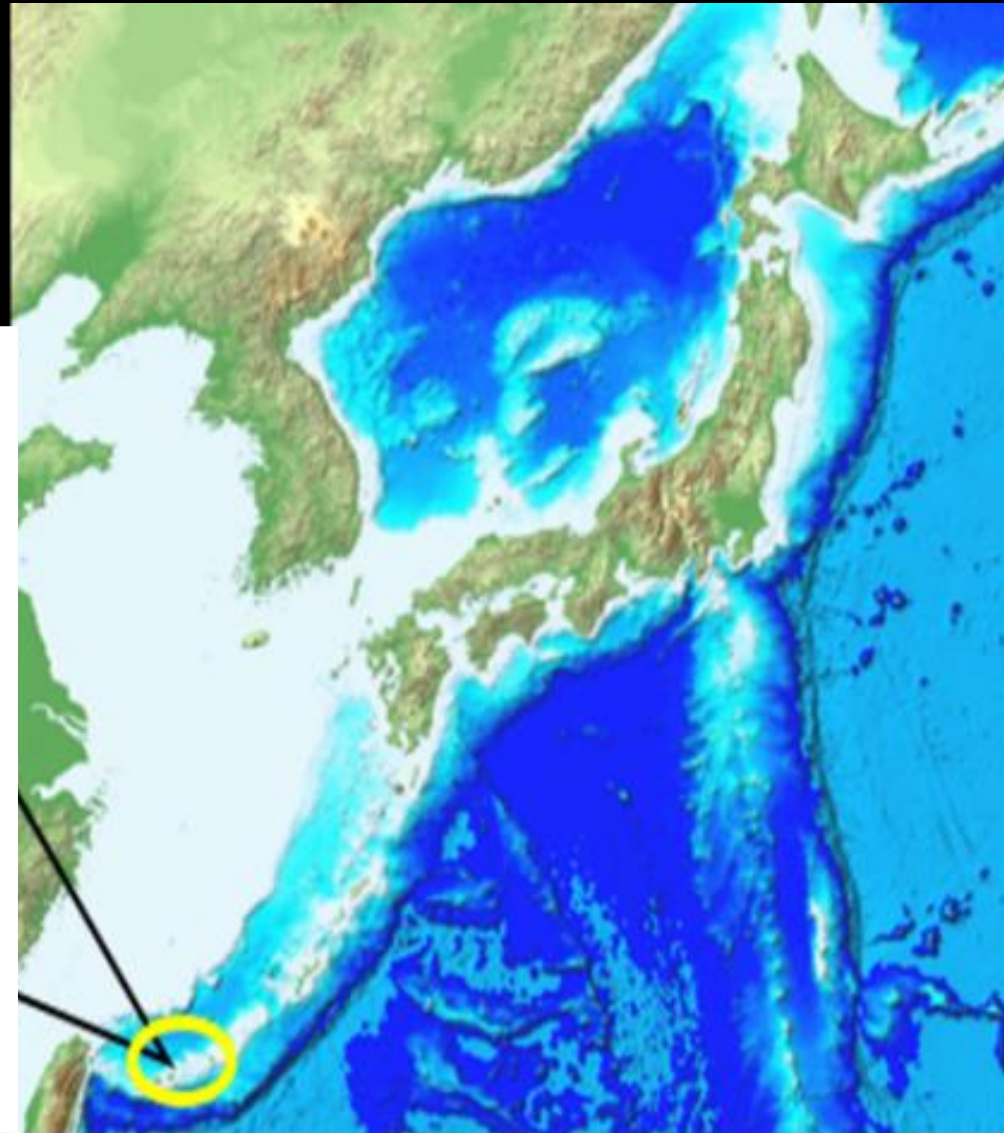
-> missing part in the current CES framework

This talk aims to:
propose a new perspective for reframing CES, based on the
finding of my PhD work

Method

Case study site: Shiraho village, Okinawa, Japan

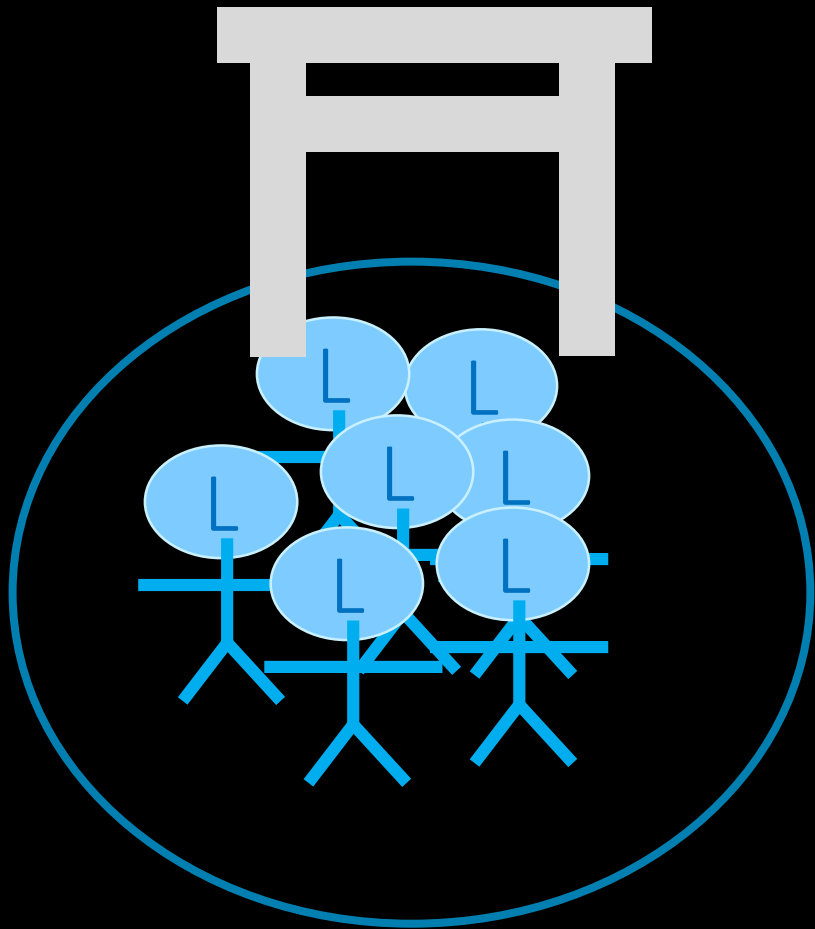
population: 1618
household: 674





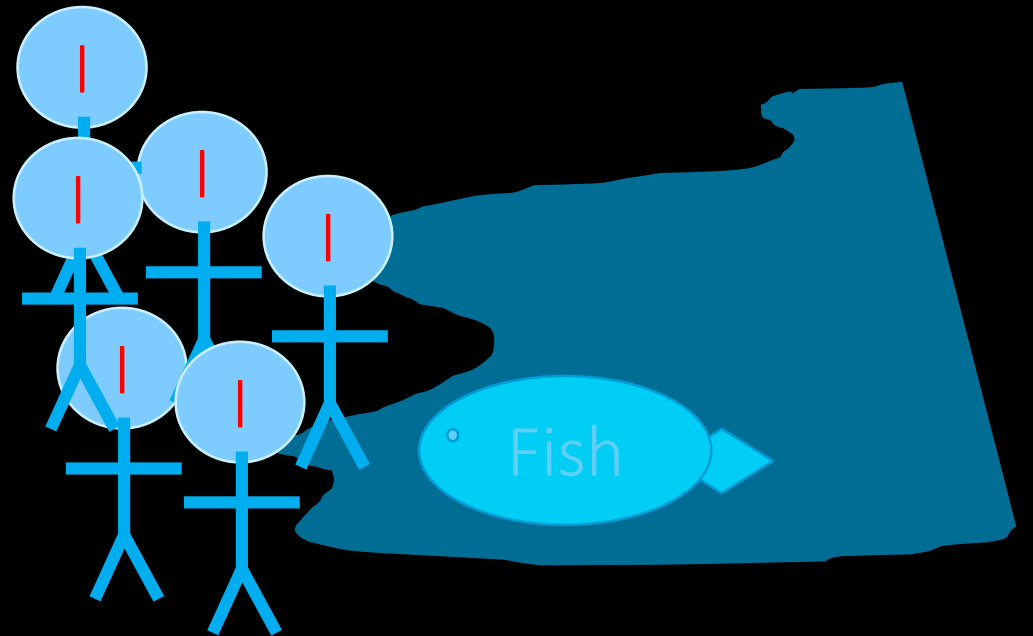
Utaki: Spiritual center of the Okinawan islands (仲松1990)

Residents who belong to utaki are only regarded as local, "real" villagers.



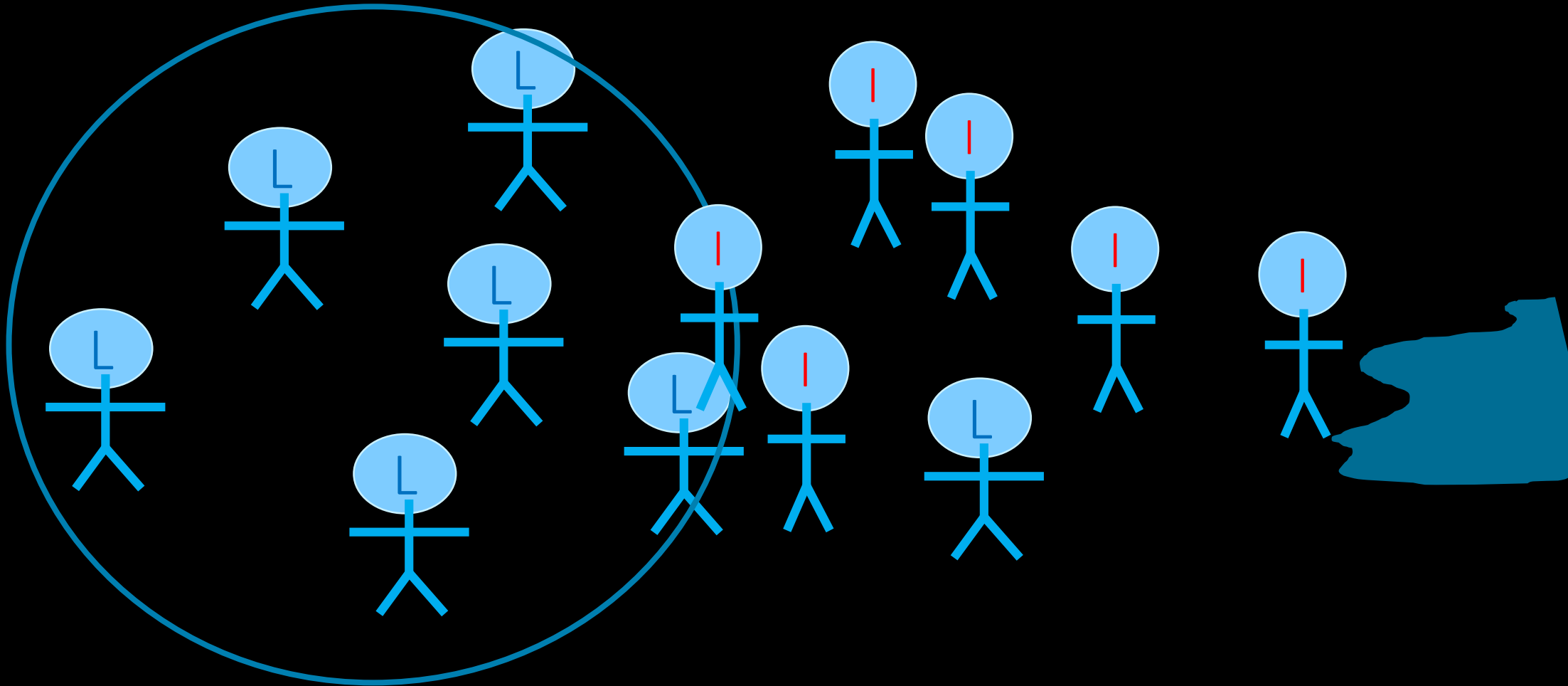
Most fishers are immigrants

They are 'outsiders' without belonging to Utaki



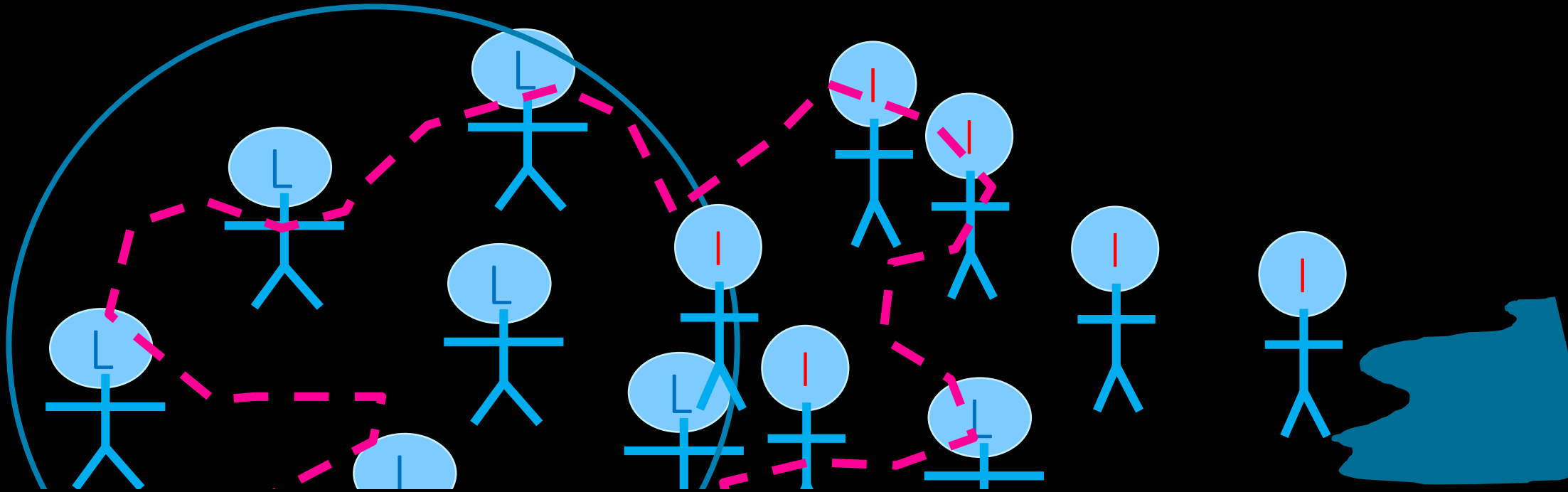
In reality (daily lives),,,

Some fishers are accepted/regarded as “real” villagers
But, some locals are excluded from “real” villagers



In reality (daily lives),,,

Some fishers are accepted/regarded as “real” villagers
But, some locals are excluded from “real” villagers



The boundary of ‘community’ is dynamic

What's the factors shaping the dynamic boundary of community?

→ to capture the notion of 'community' from the local residents' perspective (my PhD)

Structured free-answer questionnaire designed with the time axis

Q1. Do you think Shiraho village became better place than the past (for example 10 years ago)? Please circle (○) the number that represents how you think.

1. Strongly disagree
2. Disagree
3. Neutral
4. Agree
5. Strongly agree

Q2. Why do you think like the above? Please explain your thought.

Q3. What do you think is important for Shiraho village to become further better place than present in the future (for example 10 years later)? Please explain your thought freely.

Data collection & analysis

Data collection: structured free-answer questionnaire designed with time axis

Text content was analyzed quantitatively & qualitatively (self-organized map & affinity diagram)

Survey Period: 12th Feb. ~ 24th Feb. 2016

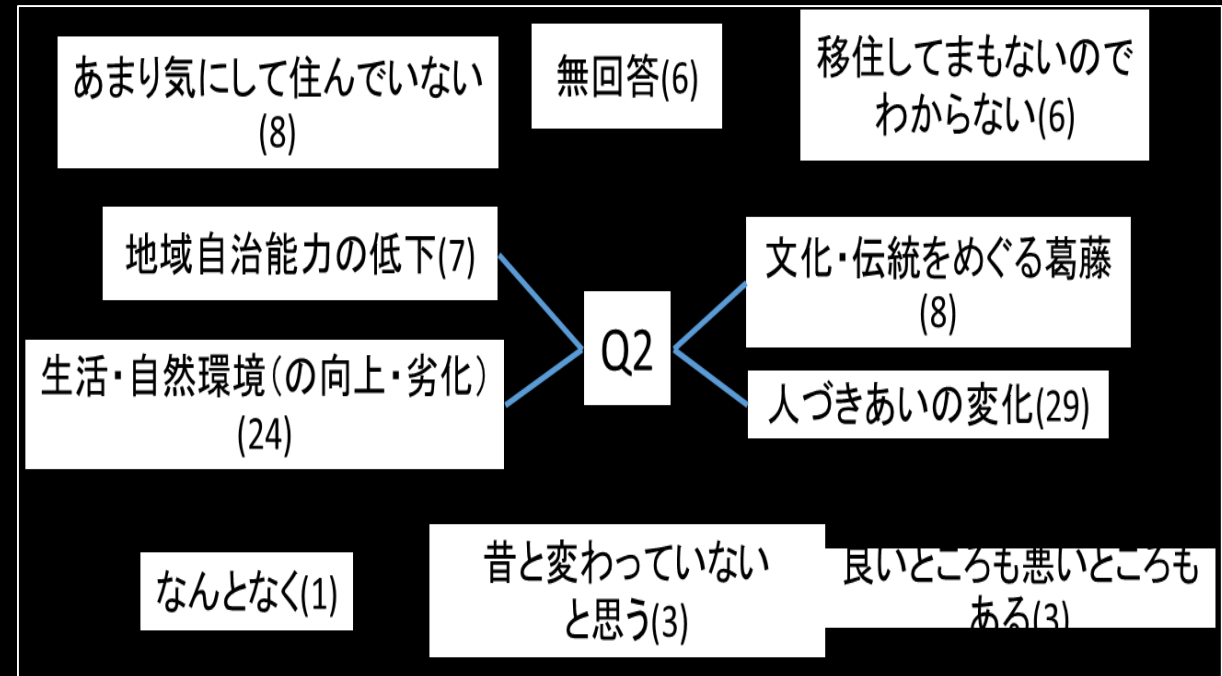
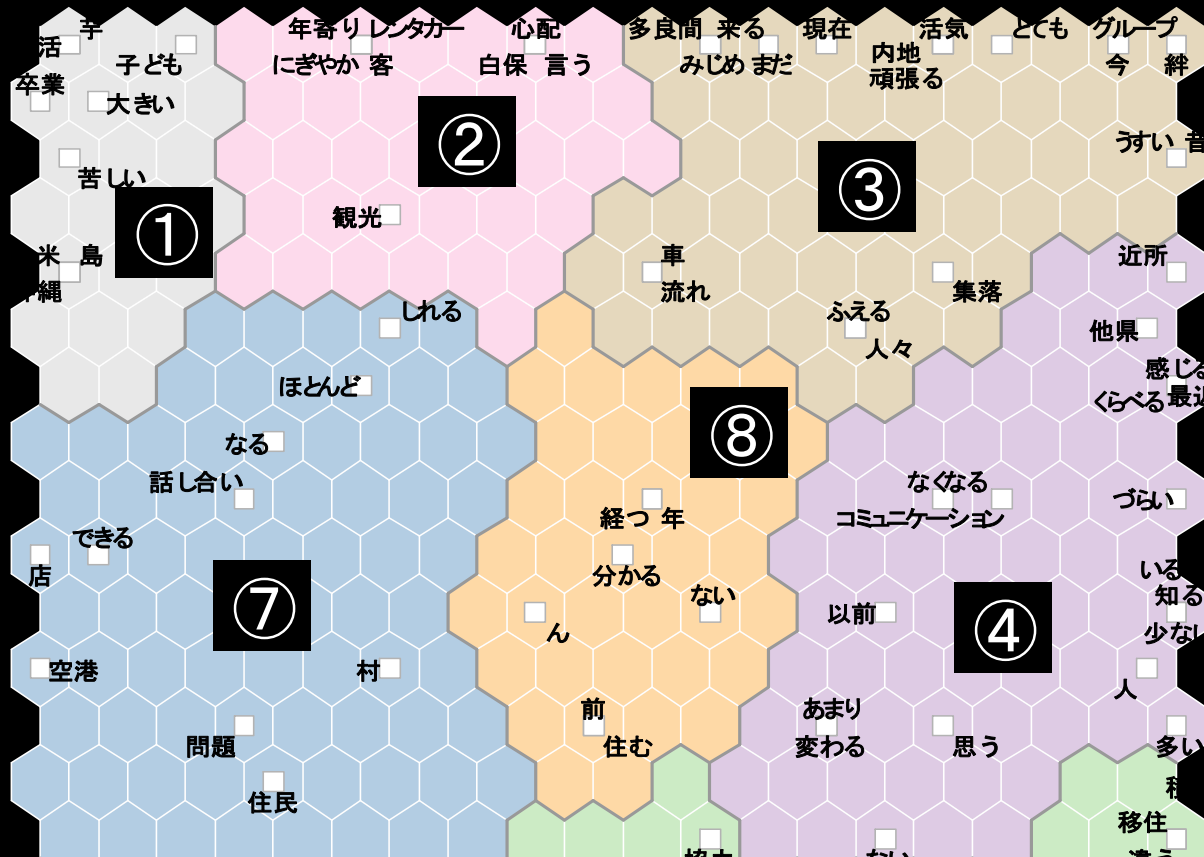
Informants: 57 residents selected by stratified sampling

Results

Structure of participants

		Samples	Mother pop.
Gender (M: F, %)	Age	59.65: 40.35	49.96 : 50.04
Population (%)	20-29	5.4	9.0
	30-39	33.9	14.7
	40-49	23.2	13.0
	50-59	17.9	14.4
	60-69	12.5	12.1
	70-	7.1	13.7
Birth origins (%)	Locals	50.9	60.0
	Migrants from other islands of Okinawa	29.8	30.0
	Migrants from other pref.s	19.3	10.0

Self-organized map & affinity diagram of Q2 answer



residents' inner conflict between economic development & rapid socio-cultural change in the community



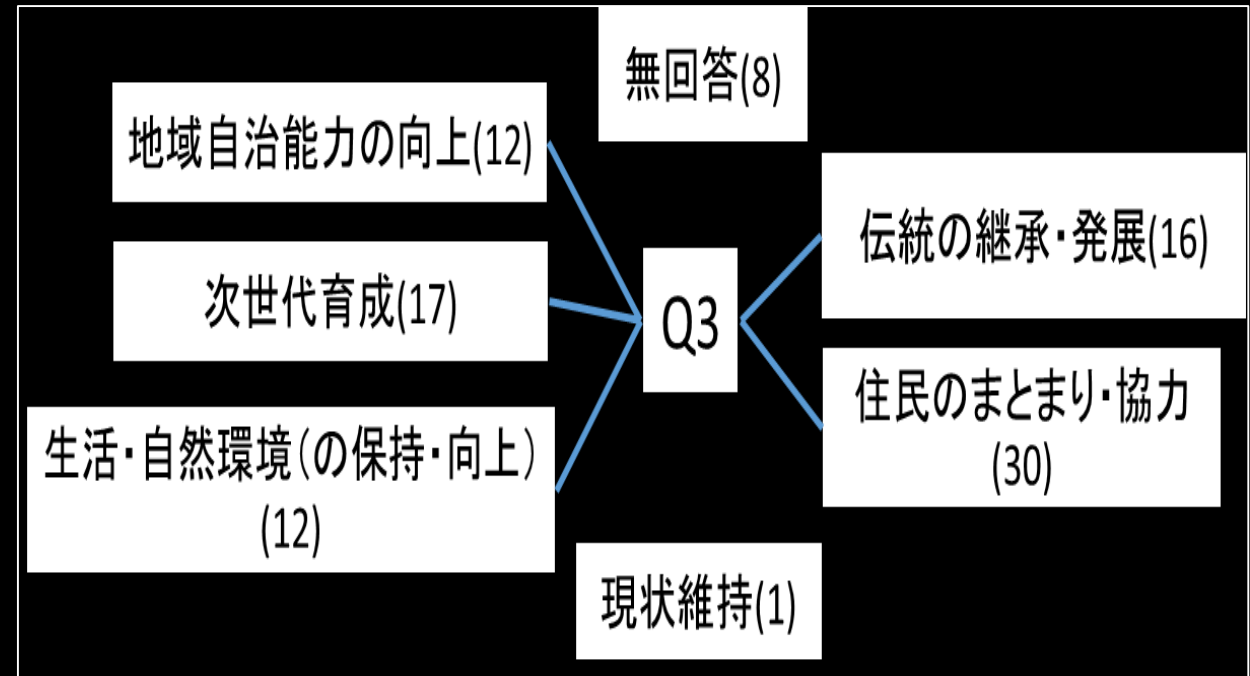
- Words included
- Community
 - Immigrate
 - Outsiders
 - Locals
 - Young people
 - Old people
 - Number
 - Population
 - Decrease
 - Increase
 - Relationship
 - Culture
 - Rituals
 - Important
 - Activity
 - Slightly
 - Different

Locals and immigrants

Increase & decrease of population

inner conflict toward changing culture & social relationships

Self-organized map & affinity diagram of Q3 answer



residents' ideal image of community which overcome the inner conflict shown in Q2 answers



Words included

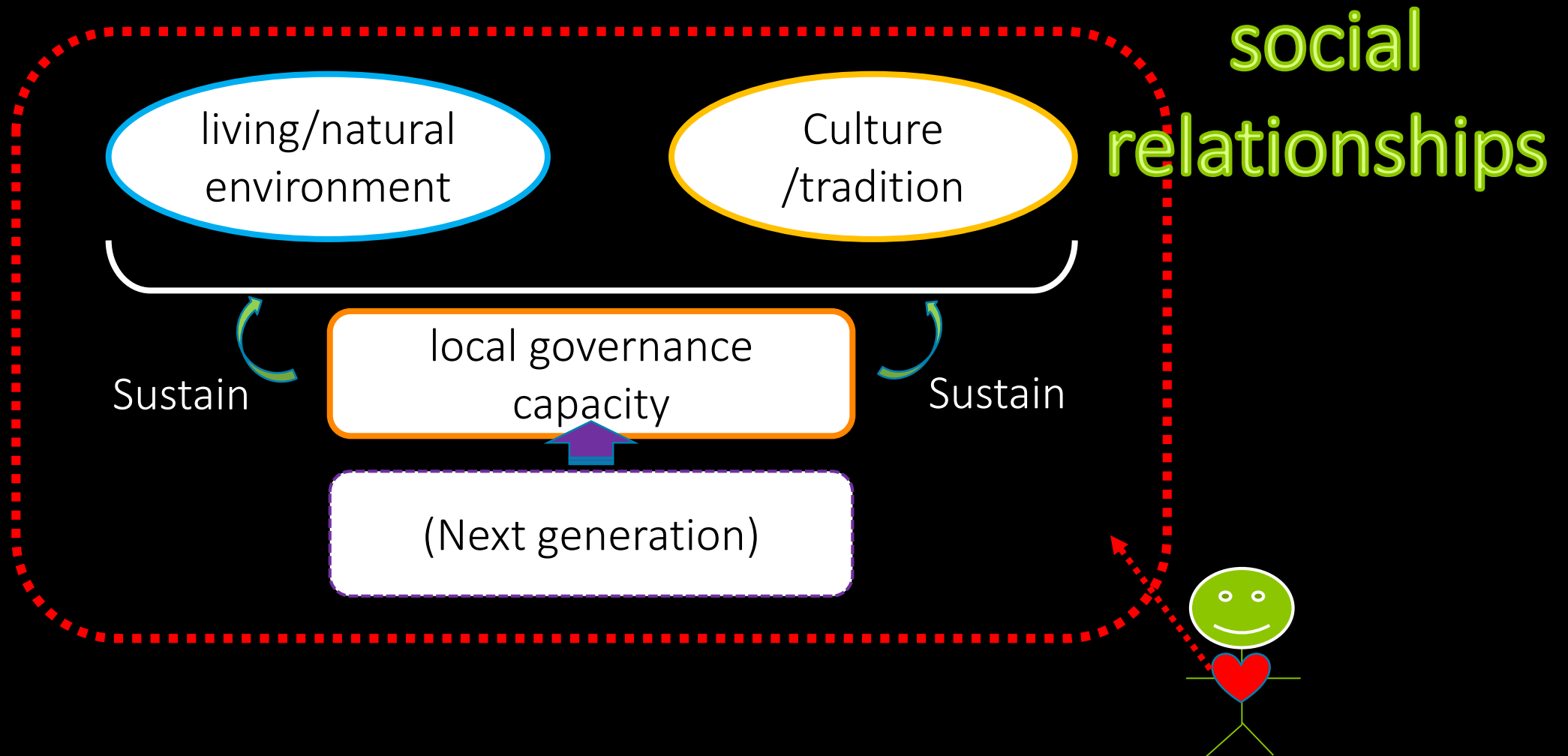
- Community
- residents
- feeling
- ritual
- culture
- continue
- forever
- meaning
- generation

Feeling of residents

Continue culture & tradition over the generation

Q2	Fre q.	Q3		Fr eq.	Integrated components
Change of social relationships	29	Social cohesion, cooperation		30	Social relationships
Conflict over culture and tradition	8	Succeed and development of culture/tradition		16	culture/tradition
Conflict over living/natural environment	24	Retaining and improvement of living/natural environment		12	living/natural environment
Decrease of local governance capacity	7	Development of local governance capacity	Improvement of local governance capacity of present generation	12	local governance capacity
			Capacity development of next generation	17	

4 components of "community" among Shiraho residents



4 components of "community" among Shiraho residents

social

For Shiraho residents, the ideal community is
a device to keep developing the
"living/natural environment" and
"culture/tradition", being well supported by
the "local governance capacity" and "social
relationships"





Important key for locals & immigrants to build social cohesion (shape the boundary of community) is:
to practice something beneficial for developing "living/natural environment" and "culture/tradition" of the community.

Discussion and Conclusion parts are excluded, as the contents are under preparation for a peer review manuscript.



Thanks for listening 😊
ありがとうございました

