

Queen Charlotte Strait Finite Volume Community Ocean Model Development

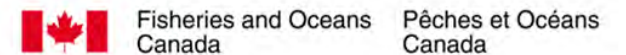
Yuehua (Andy) Lin¹, Laura Bianucci², Maxim Krassovski², and Mike G.G. Foreman²

Acknowledgement: Pramod Thupaki, Jennifer Jackson (Hakai Institute, Calvert Island, BC, Canada)
David B. Fissel¹, Michael Dunphy², Glenn Cooper² and other PARR members



¹ASL Environmental Sciences Inc., Victoria, BC, Canada
E-mail: alin@aslenv.com

²Fisheries and Oceans Canada (DFO), Institute of Ocean
Sciences, Sidney, BC, Canada



PICES-2019
Victoria B.C. Canada



Fisheries and Oceans
Canada

Pêches et Océans
Canada

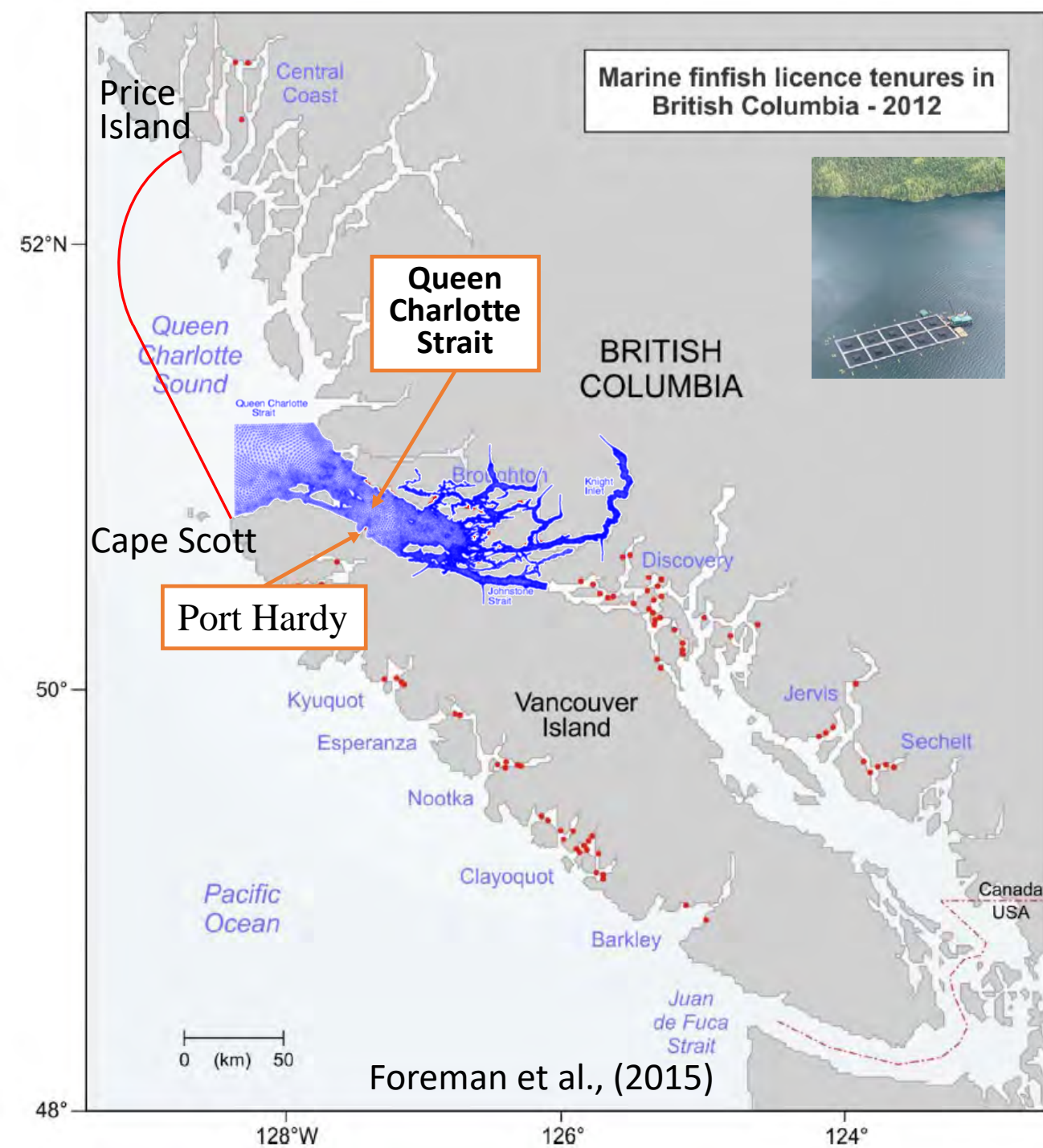
The background of the slide features a stylized graphic of blue waves at the top, transitioning into a field of green and blue foliage, possibly representing seaweed or aquatic plants, against a light blue background.

Program for Aquaculture Regulatory Research (PARR)

The objective is to provide a high-resolution hydrodynamic model of the region to assist in finfish farm siting and assess particle/pathogen dispersal from the farms to the environment as well as farm-to-farm interactions.

OUTLINE

- Motivation for Queen Charlotte Strait (QCS) Coastal Model
- QCS Finite Volume Community Ocean Model (FVCOM) Development
- Model Results from Preliminary Test Runs
- Summary and Future Work

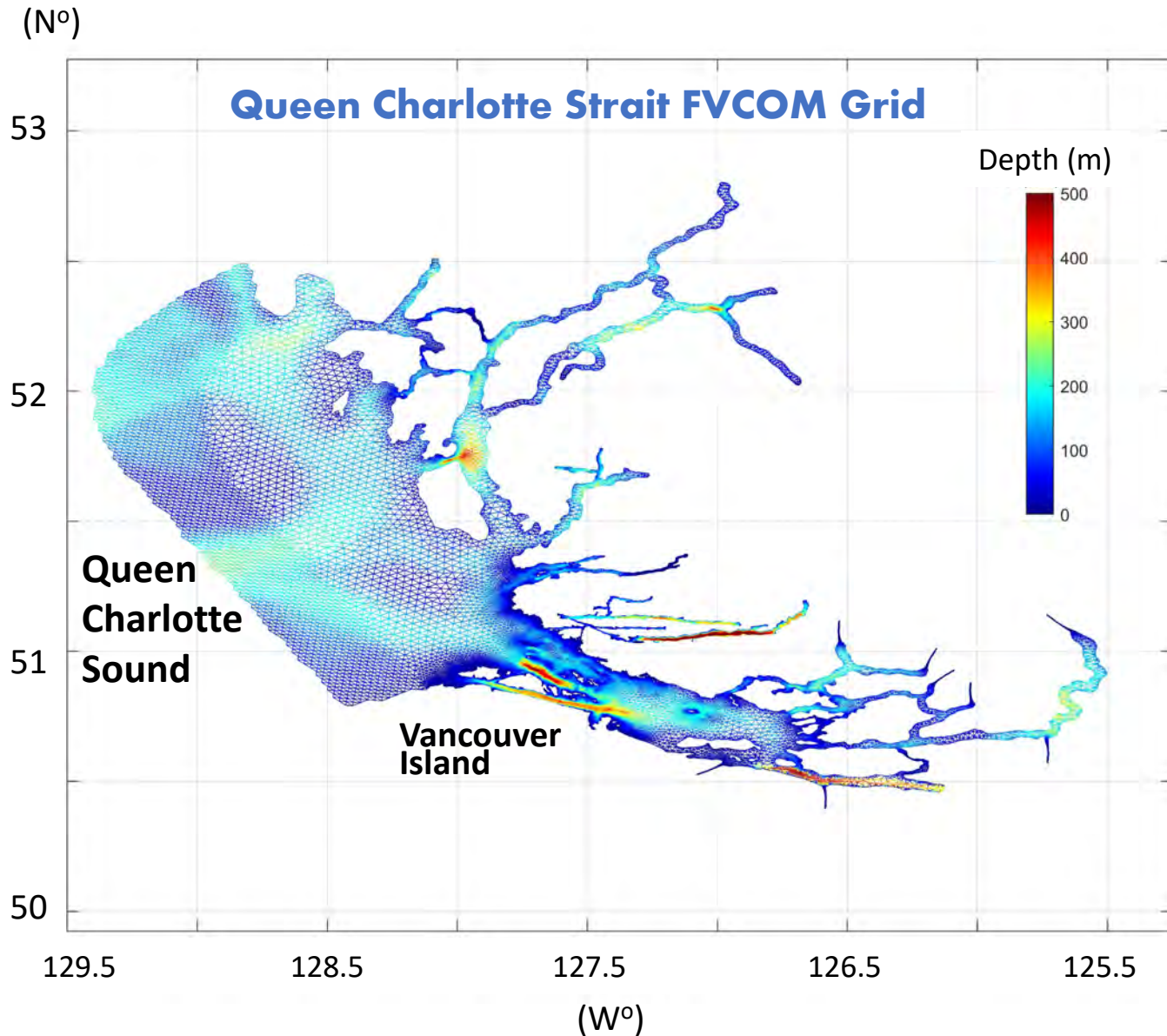


- **Starting Point**

DFO Broughton Archipelago FVCOM Model
(e.g. Foreman et al., 2009 & 2015)

-
- **Extended further north (Proposed)**
 - **Focus of resolution changed to Queen Charlotte Strait (QCS)**
 - **Coupling with a large-scale operational ocean circulation model**
 - **Using surface winds and heat flux predictions from Environment and Climate Change Canada (ECCC)**

QCS FVCOM Model Development



- **Bathymetry**

British Columbia 3" Bathymetric Digital Elevation Model (National Geophysical Data Center, NGDC)

- **Coastlines**

Canadian Hydrographic Service (CHS) High Water Mark Lines (<https://catalogue.data.gov.bc.ca/dataset/chs-high-water-mark-lines>)

- **Grid Numbers**

122,243 nodes and 218,619 elements

- **Vertical Layers**

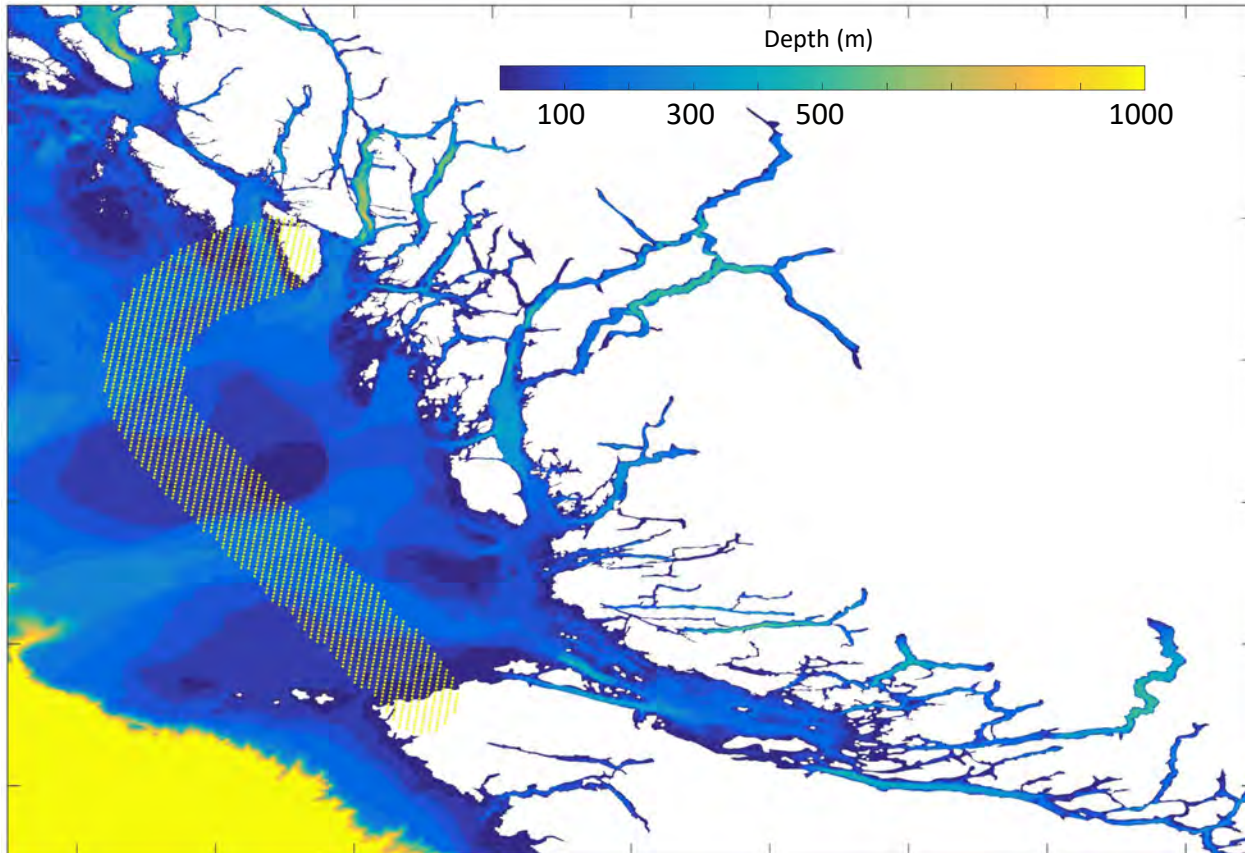
σ -coordinate system with 10 even levels (temporarily)

- **Horizontal Resolution**

50 m at the Port Hardy region

2000 m at the open ocean

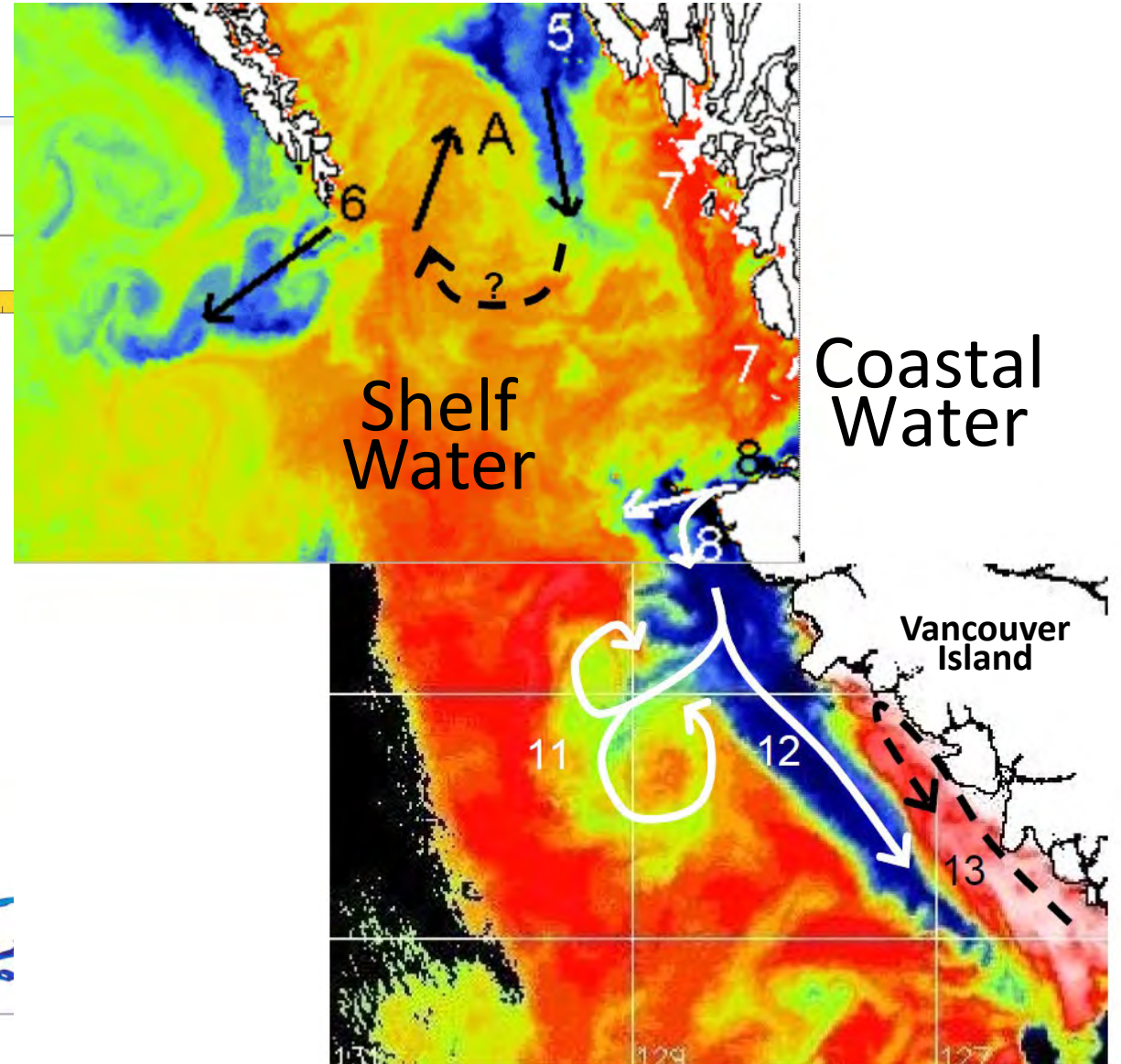
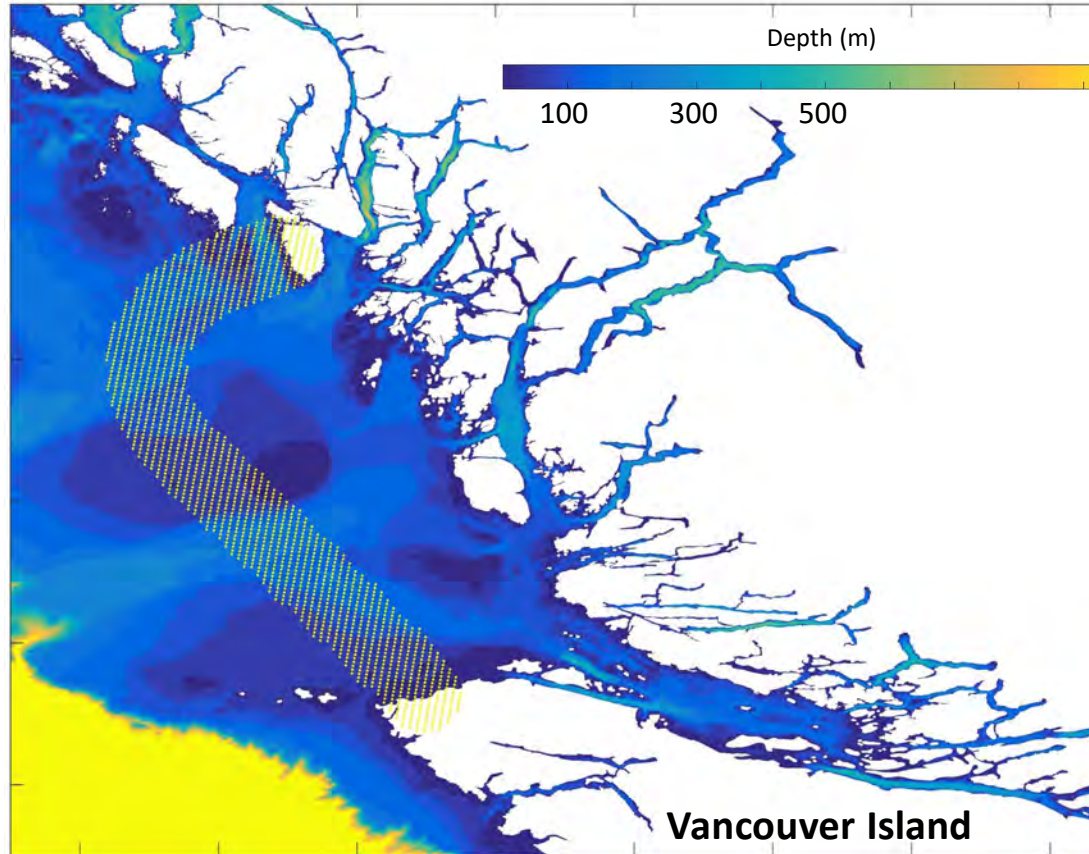
Open Boundary Coupling Zone



Hyperbolic tangent (\tanh) weight function of distance with a relaxing time (τ)

- At the open ocean boundary (Queen Charlotte Sound), the model is one-way nested within the operational largescale Coastal Ice Ocean Prediction System for the West coast (CIOPS-W) via a 15-grid-wide overlapping zone.
- CIOPS-W is developed by the Canadian Operational Network of Coupled Environmental Prediction Systems (CONCEPTS).
- The ocean model is based on Nucleus for European Modeling of the Ocean (NEMO) with $1/36^\circ$ horizontal resolution (~ 2.0 to 2.5km) and 75 z-level in the vertical ($\Delta z = 1\text{m}$ at surface to 400m at 5000m).

Open Boundary Coupling Zone



NOAA satellite image of SST. The lower portion was collected 23 July 1994 at about midnight PDT, the upper portion was collected 24 July 1994 at about 0600 PDT; cold water ($\sim 10^{\circ}\text{C}$) is represented by blue and warm ($\sim 16^{\circ}\text{C}$) by red. Numbers refer to features identified on the SST images. (Crawford et al., 2007)

MODEL TEST RUNS

The model has been run stably with tidal forcing, surface winds and heat flux, river discharges, and T/S activated

- 6 tidal constituents (K1, O1, P1, M2, N2, S2) determined from a combination of tide gauge records and the Northeast Pacific model of Foreman et al. (1993 & 2000)
- High-Resolution Deterministic Prediction System (HRDPS) from Environment and Climate Change Canada (ECCC) provides surface winds and heat flux related parameters with a 2.5 km spatial resolution
- Freshwater discharges from 5 major rivers based on National Water Data Archive (HYDAT)

Initial T/S: CIOPS-W, May 10th, 2016

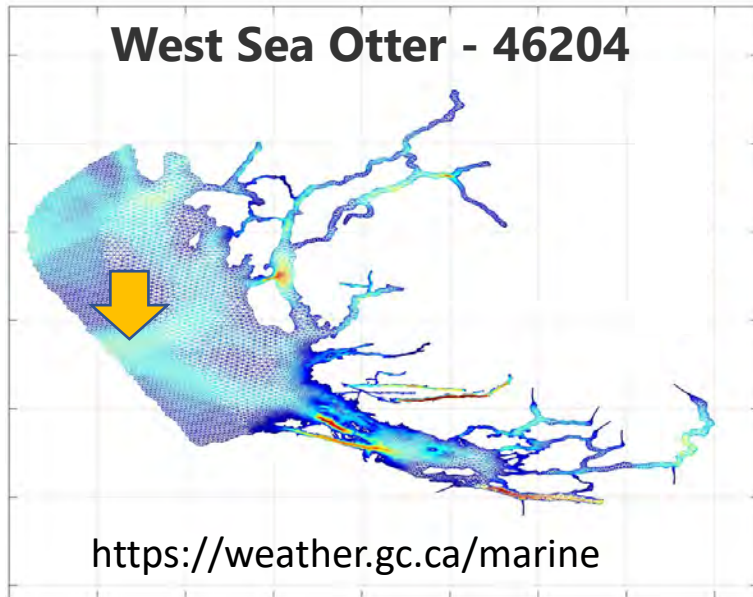
Duration: May 10th to 30th, 2016

(Including the spin-up period)

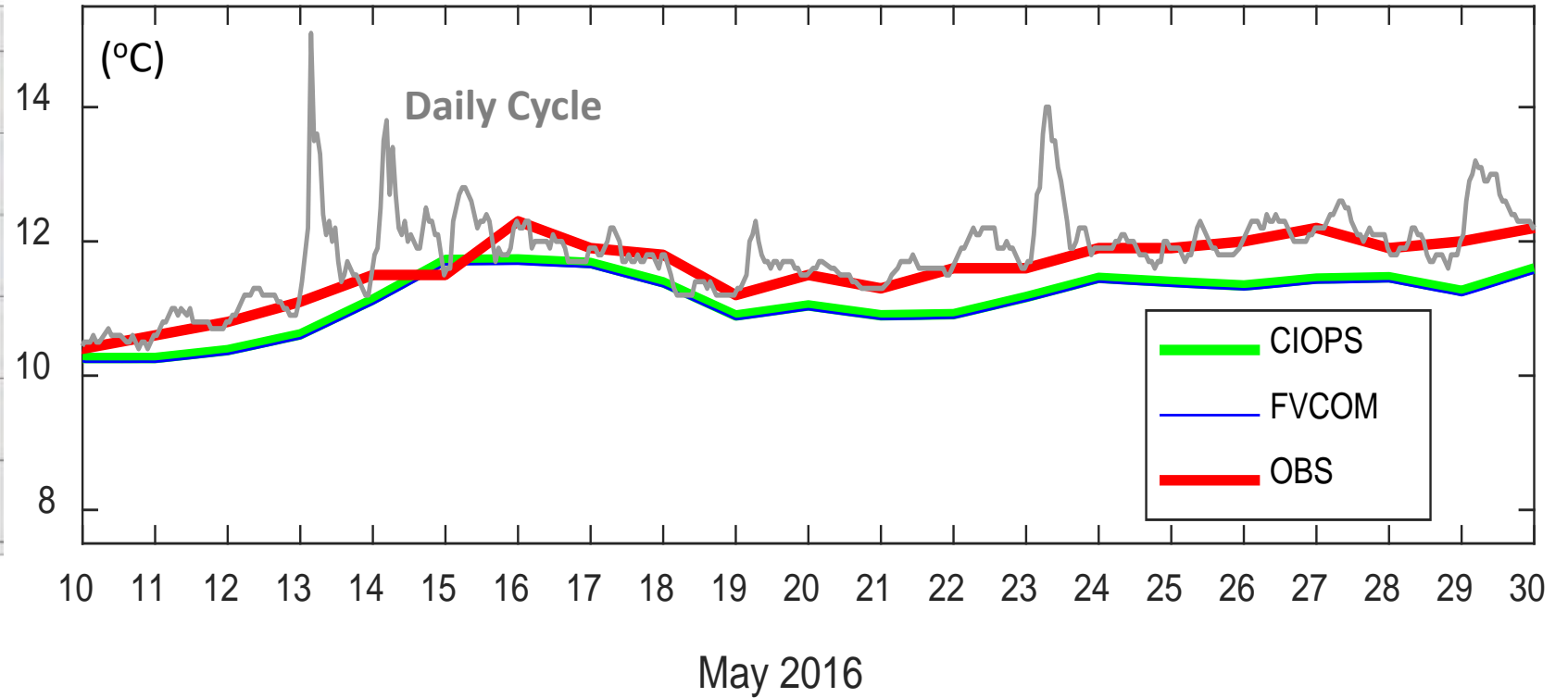
Coupling Zone	Test Run 1	Test Run 2
Surface Elevation	CIOPS-W hourly	
T and S	CIOPS-W daily (saved at 00:00 UTC)	
Currents	CIOPS-W daily (saved at 00:00 UTC)	
Relaxing Timescale	3 min	24 hr
Status	Done	Done

MODEL RESULTS FROM TEST RUNS

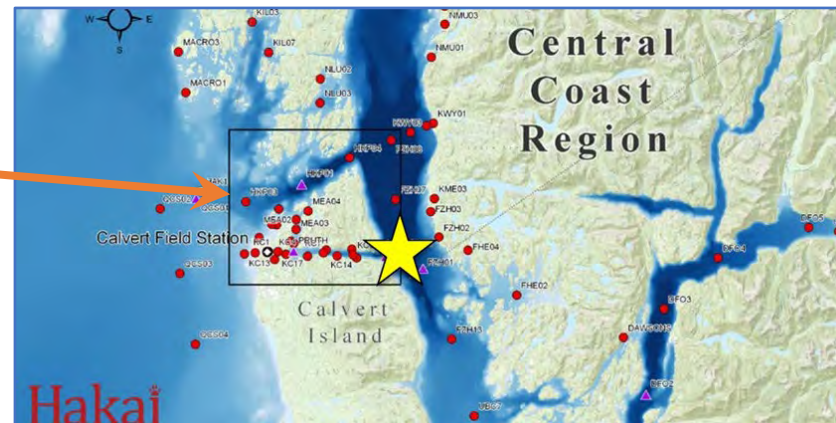
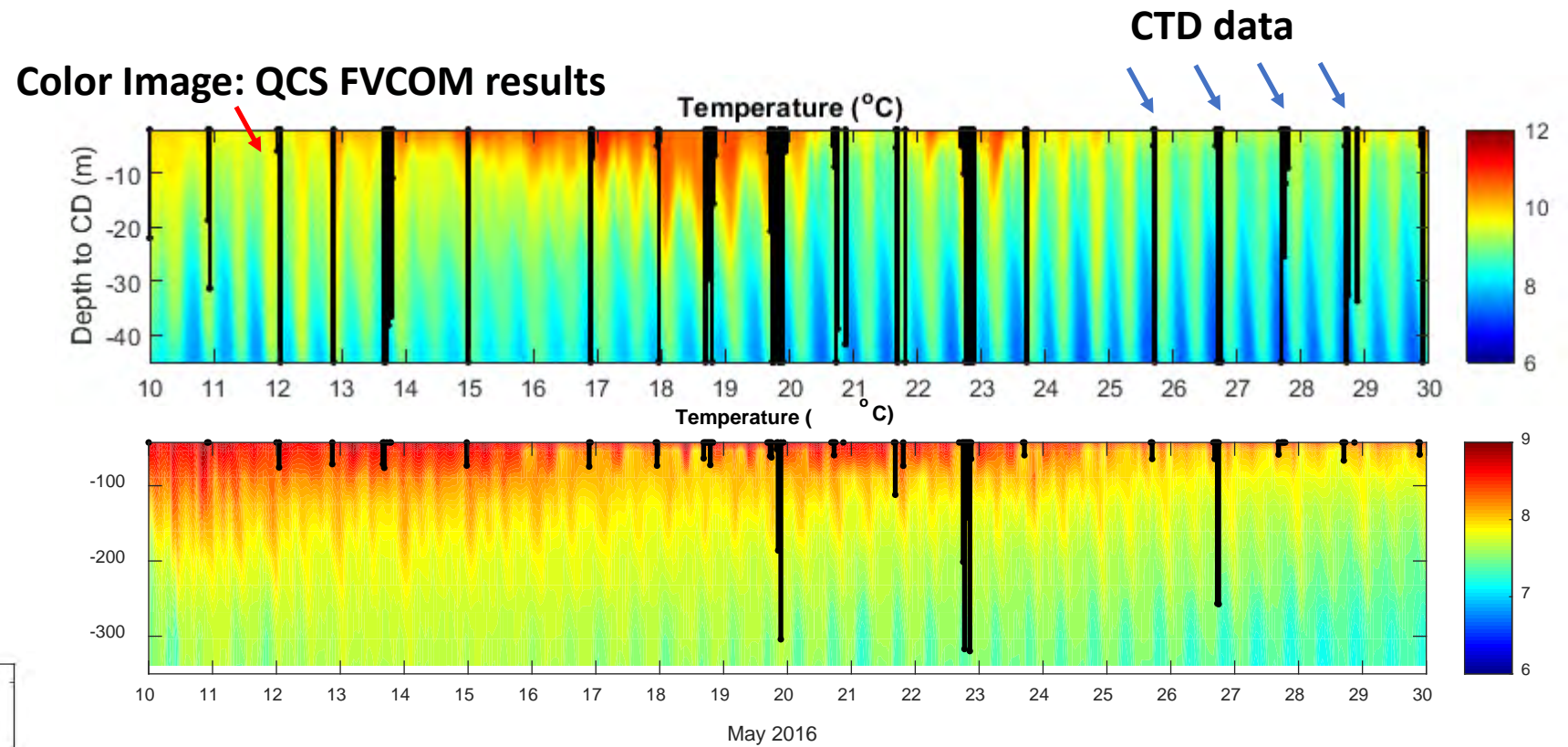
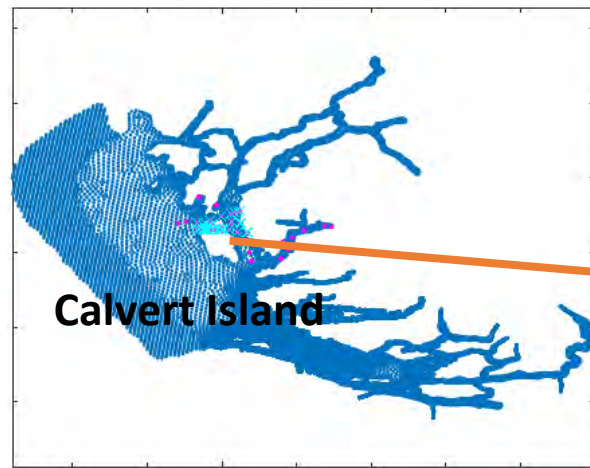
SST (Test Run 1)



Buoy position: 51.23N 128.46W

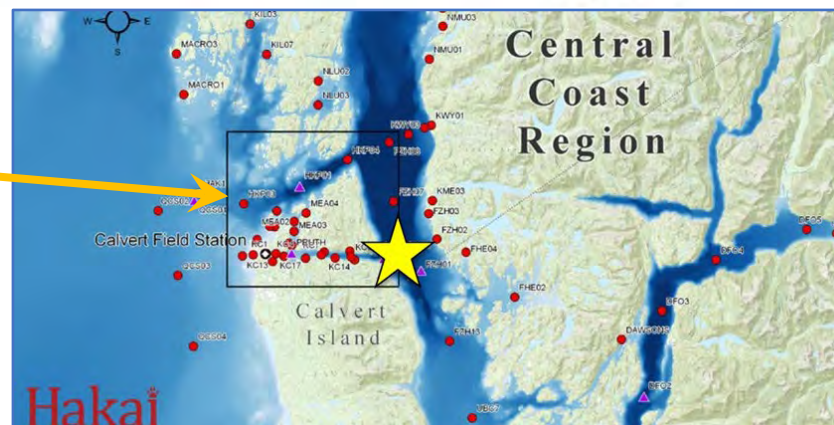
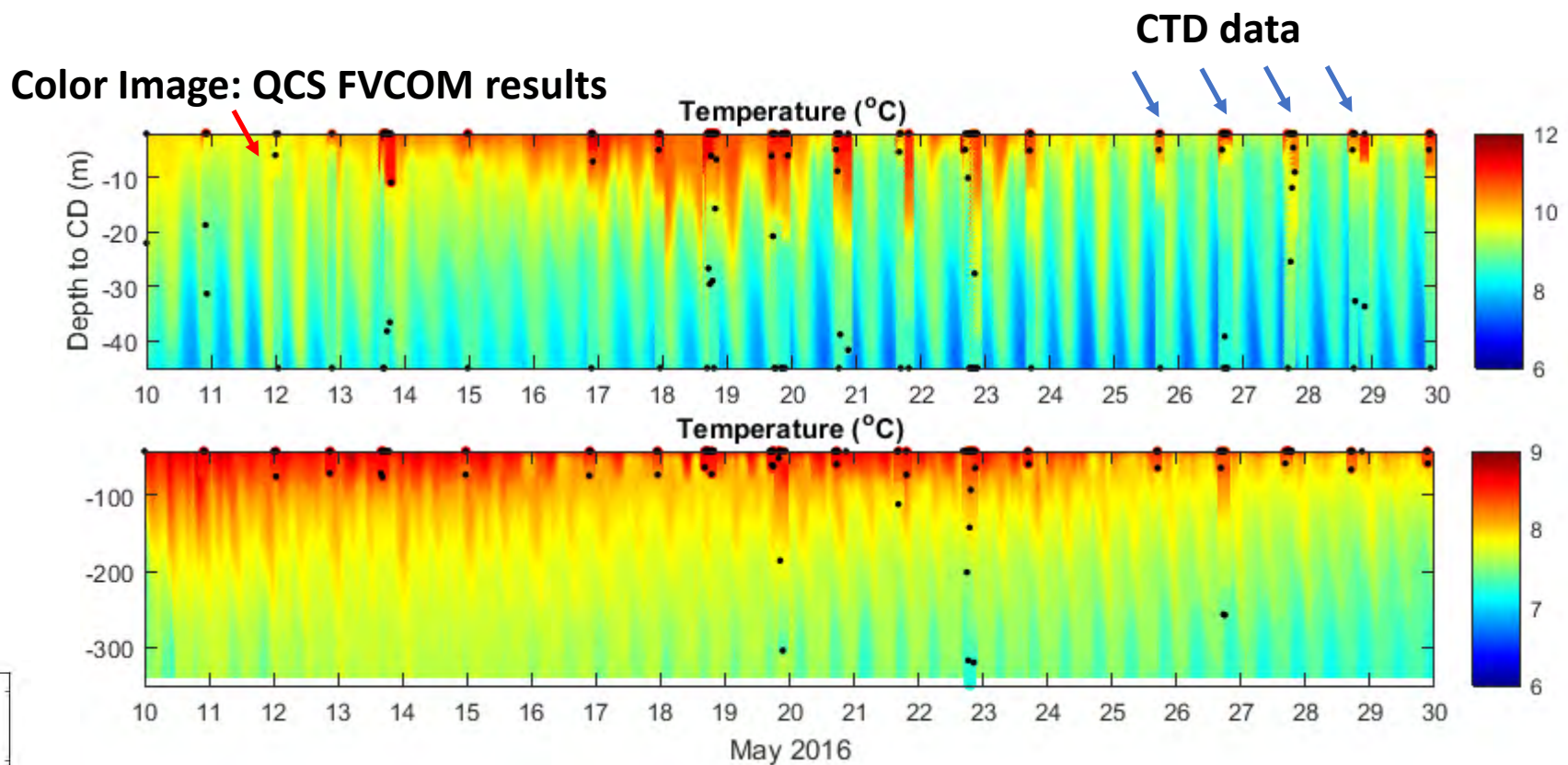
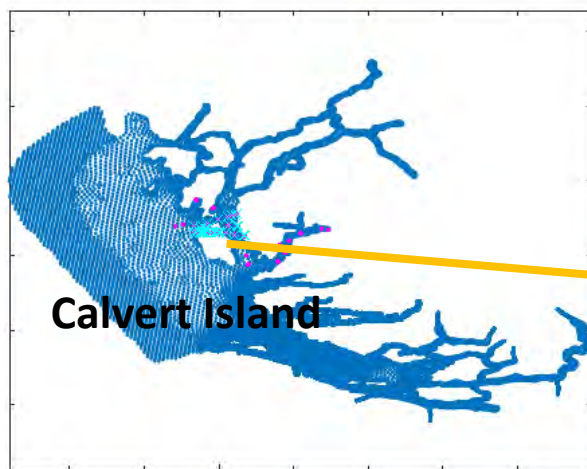


Water Temperature at Calvert Island (Test Run 1)



Data Source: Jennifer Jackson

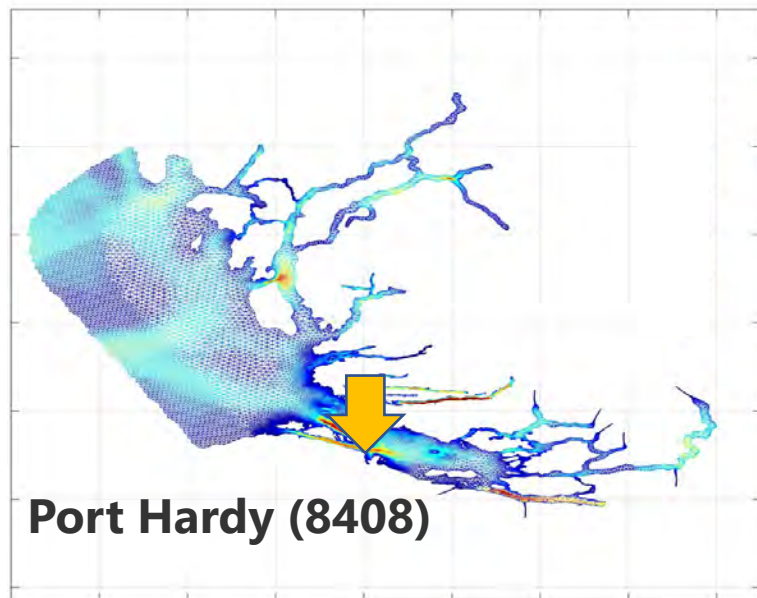
Water Temperature at Calvert Island (Test Run 1)



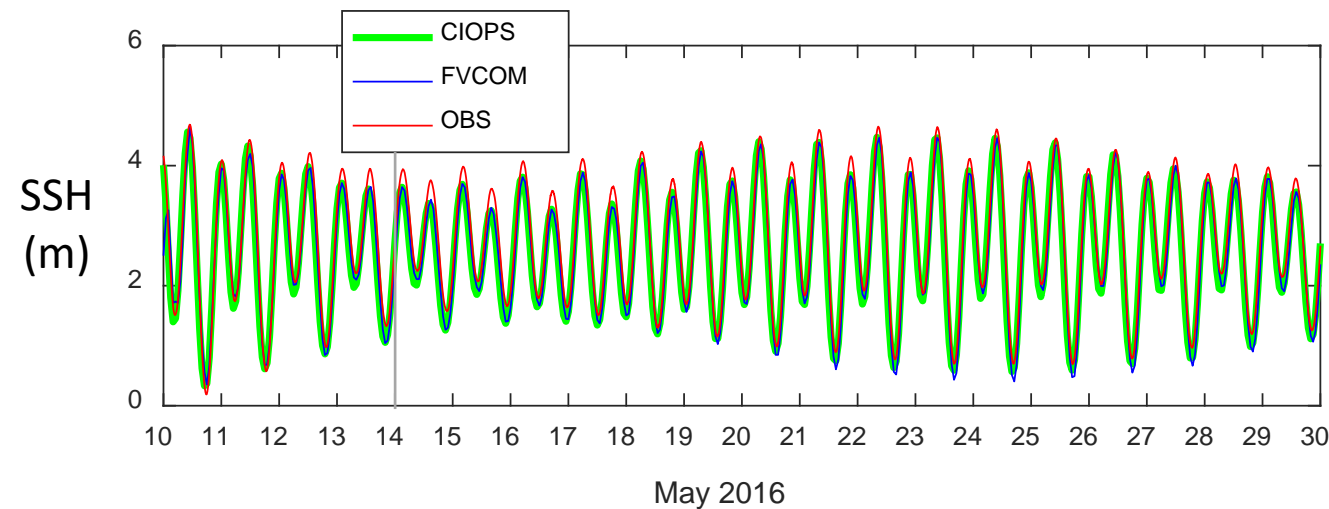
Data Source: Jennifer Jackson

MODEL RESULTS FROM TEST RUNS

Tidal Levels (Test Run 1)



<https://www.waterlevels.gc.ca/>

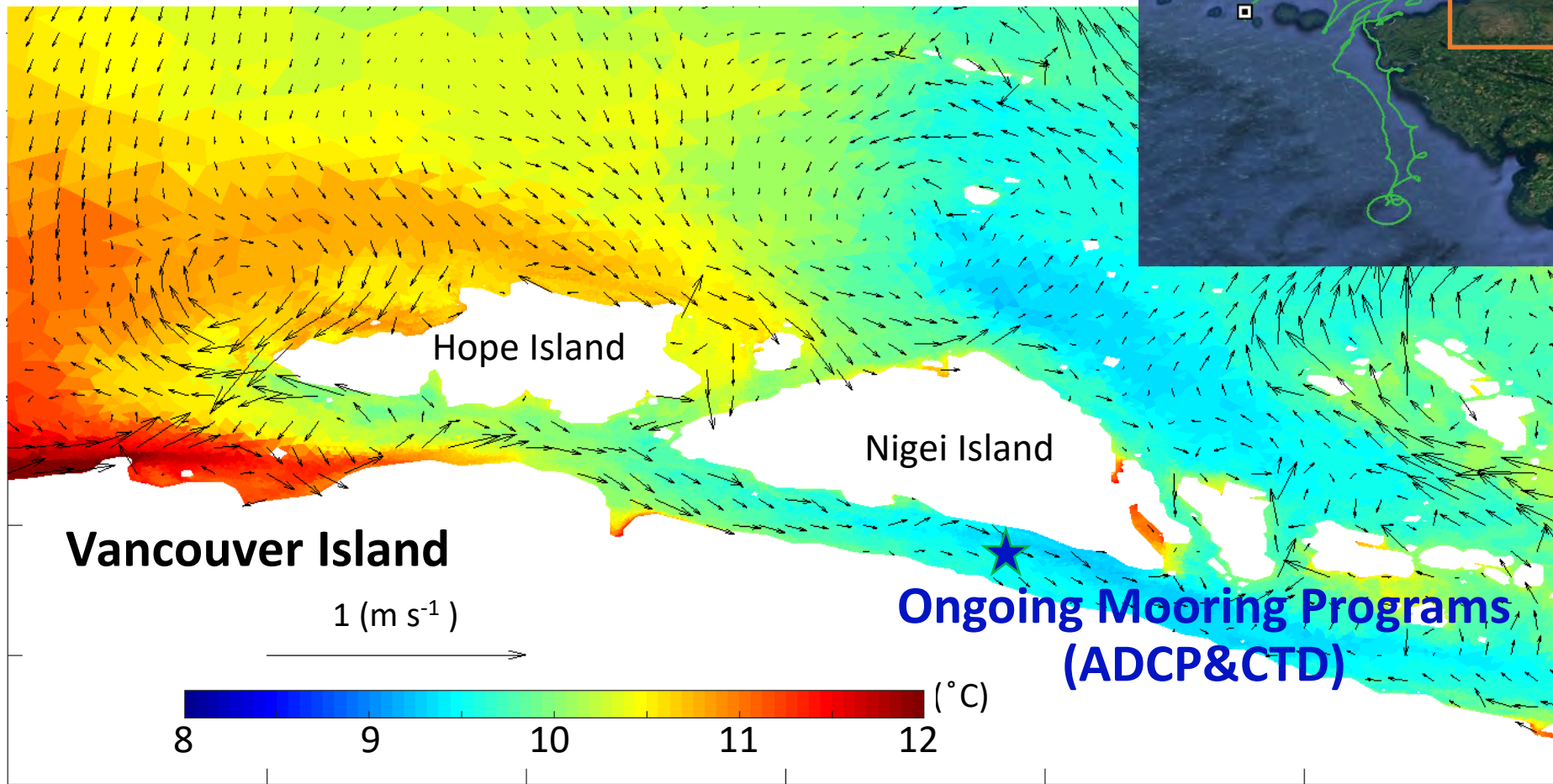


Tidal Constituent	Amp ratio to OBS		Phase diff(°) to OBS	
	CIOPS-W	FVCOM	CIOPS-W	FVCOM
K1	1.12	<u>0.99</u>	-4.9	<u>1.1</u>
O1	1.03	<u>0.97</u>	<u>0.2</u>	7.3
P1	1.12	<u>0.99</u>	-4.9	<u>1.1</u>
K2	<u>0.99</u>	1.02	-12.4	<u>2.3</u>
M2	<u>1.00</u>	1.02	-11.6	<u>1.6</u>
S2	<u>0.99</u>	1.02	-12.4	<u>2.3</u>

- *Amplitude ratio = modeled/observed*
- *Phase difference = modeled - observed*
- *May 14-30, 2016*

Currents in Goletas Channel (Test Run 1)

Max SST and Mean Surface Currents (May 14-30, 2016)

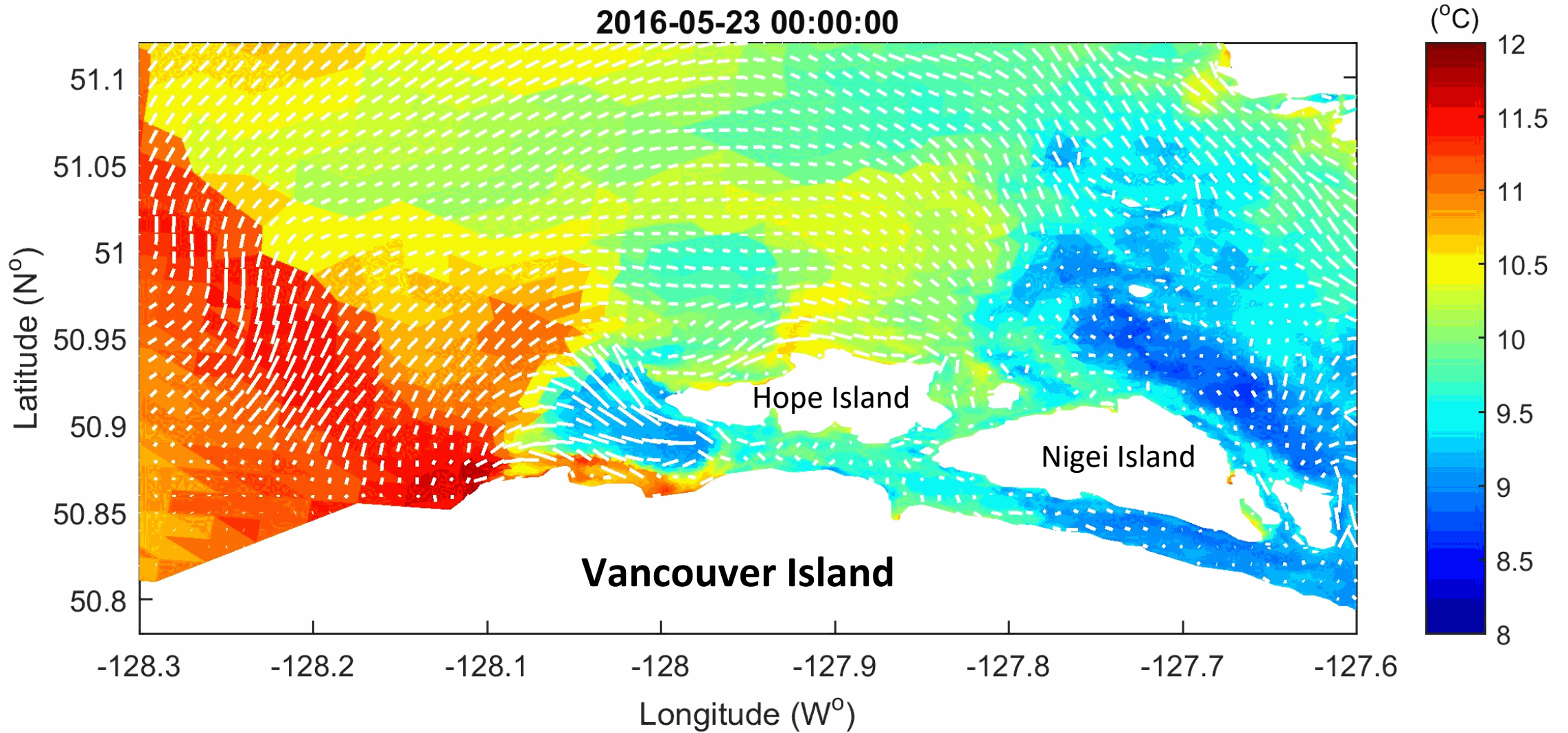


Drifter Trajectory Source: Glenn Cooper



Test Run 1: one-day Animation for SST and Surface Currents during Spring-Tide (May 23, 2016)

2016-05-23 00:00:00



MODEL RESULTS FROM TEST RUNS

- *Amplitude ratio = modeled/observed*
- *Phase difference = modeled - observed*
- *May 14-30, 2016*

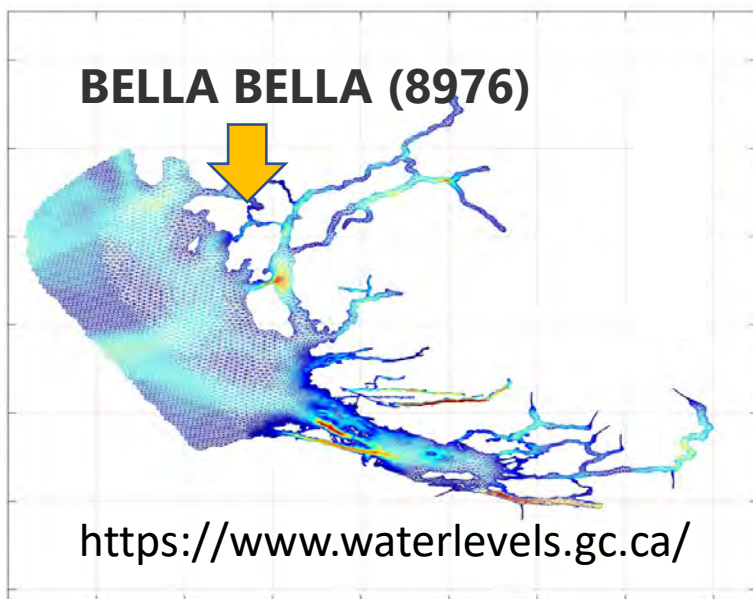
Test Run 1:

Relaxing timescale = 3 min

Test Run 2:

Relaxing timescale = 24 hr

Tidal Constituent	CIOPS-W		FVCOM Run1		FVCOM Run2	
	Amp ratio	Phase diff°	Amp ratio	Phase diff°	Amp ratio	Phase diff°
K1	0.93	11.2	0.87	16.1	0.86	9.7
O1	1.06	-4.9	0.99	-16.5	0.94	-8.1
P1	1.14	-2.8	1.06	2.1	1.06	-4.4
K2	1.04	-17.4	0.86	2.2	0.98	-12.7
M2	1.03	-11.0	0.85	5.2	0.96	-11.4
S2	1.05	-9.2	0.88	10.4	1.00	-4.5



Conclusion:

- The 3-min relaxation at the coupling zone suppresses the tides, because of using the instant daily ocean currents (U,V) from CIOPS-W
- Central Coast BC is affected more than Queen Charlotte Strait
- Semi-diurnal amplitudes are affected more than diurnal amplitudes
- This suppression could be mitigated by increasing the relaxation timescale

SUMMARY

- Queen Charlotte Strait (QCS) Coastal Model using FVCOM is under development
- Primary model results have been examined by comparison with CIOPS-W results and limited observations in the domain
- The model has demonstrated reasonable skills for water levels and temperatures in the test runs

FUTURE WORK

- Test Run 3 with hourly CIOPS-W T/S and currents
- Better resolution in the vertical
- More freshwater discharges for un-gauged rivers
- Further model validation and evaluation



Environmental
Sciences

Poles to
the Equator

Products

Services

WERA Remote Ocean
Sensing System

Satellite and Airborne
Remote Sensing

Deployment
and recovery

Thank You!

Multi-frequency
Acoustic Water
Column Profiler

Ice Profiler

Flow measurement

Sediment transport
studies

Ice studies

Numerical modeling

Wave measurement
and analysis

Moorings

Extensive lease pool available

alin@aslenv.com

MAIN REFERENCES

- Crawford, W., Johannessen, D., Whitney, F., Birch, R., Borg, K., Fissel, D., Vagle, S., Lucas, B.G., Verrin, S. and Brown, R., 2007. Appendix C: Physical and chemical oceanography. *Ecosystem overview: Pacific North Coast Integrated Management Area (PNCIMA)*. Edited by BG Lucas, S. Verrin and R. Brown. *Canadian Technical Report of Fisheries and Aquatic Sciences*, 2667.
- Foreman, M.G.G., Chandler, P.C., Stucchi, D.J., Garver, K.A., Guo, M., Morrison, J. and Tuele, D., 2015. *The ability of hydrodynamic models to inform decisions on the siting and management of aquaculture facilities in British Columbia*. Fisheries and Oceans Canada, Ecosystems and Oceans Science.
- Foreman, M.G.G., Crawford, W.R., Cherniawsky, J.Y., Henry, R.F. and Tarbotton, M.R., 2000. A high-resolution assimilating tidal model for the northeast Pacific Ocean. *Journal of Geophysical Research: Oceans*, 105(C12), pp.28629-28651.
- Foreman, M.G.G., Czajko, P., Stucchi, D.J. and Guo, M., 2009. A finite volume model simulation for the Broughton Archipelago, Canada. *Ocean Modelling*, 30(1), pp.29-47.
- Foreman, M.G.G., Henry, R.F., Walters, R.A. and Ballantyne, V.A., 1993. A finite element model for tides and resonance along the north coast of British Columbia. *Journal of Geophysical Research: Oceans*, 98(C2), pp.2509-2531.