



North Pacific Fisheries Commission – 2021

NPFC Secretariat
 North Pacific Fisheries Commission
 2F Hakuyo Hall, Tokyo University of Marine Science and Technology
 4-5-7 Konan Minato-ku, Tokyo, 108-8477, Japan.
 Web: www.npfc.int; E-mail: secretariat@npfc.int



The North Pacific Fisheries Commission (NPFC) is an inter-governmental organization established by the *Convention on the Conservation and Management of High Seas Fisheries Resources in the North Pacific Ocean* and entered into force on 19 July 2015.

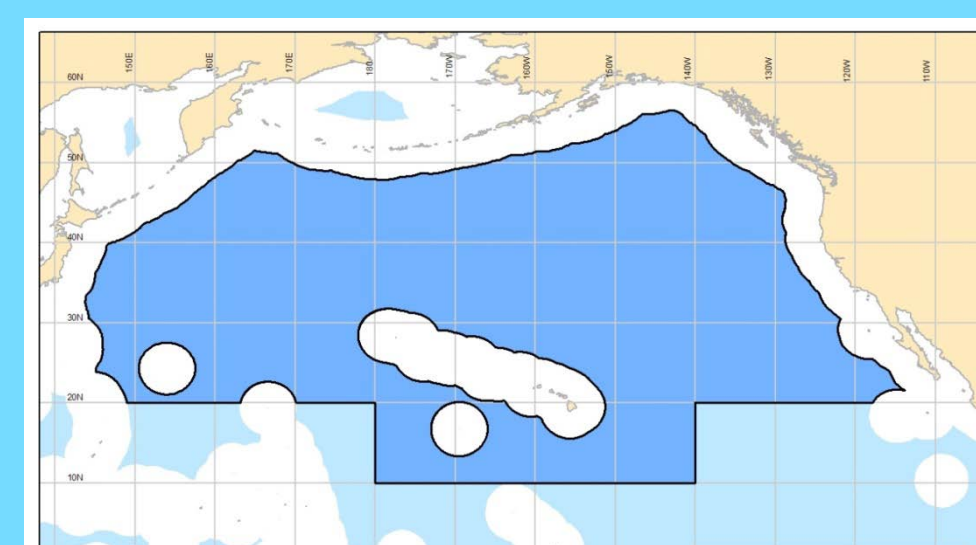
WHO

The objective of the Convention is to ensure the long-term conservation and sustainable use of the fisheries resources in the Convention Area while protecting the marine ecosystems of the North Pacific Ocean in which these resources occur.

The NPFC has currently 8 Members - **Canada, China, Japan, Korea, Russia, Chinese Taipei, USA and Vanuatu** - and one Cooperating non-Contracting Party – **Panama**.

NOTE: The COVID-19 pandemic has greatly affected the operations of NPFC Members and the Secretariat hence the activities for 2019-2021 have been restricted.

WHERE



NPFC Convention applies to the waters of the high seas area of the North Pacific Ocean (excluding the Bering Sea and the Sea of Okhotsk) and is bounded on the south by 10N and 20N parallels.

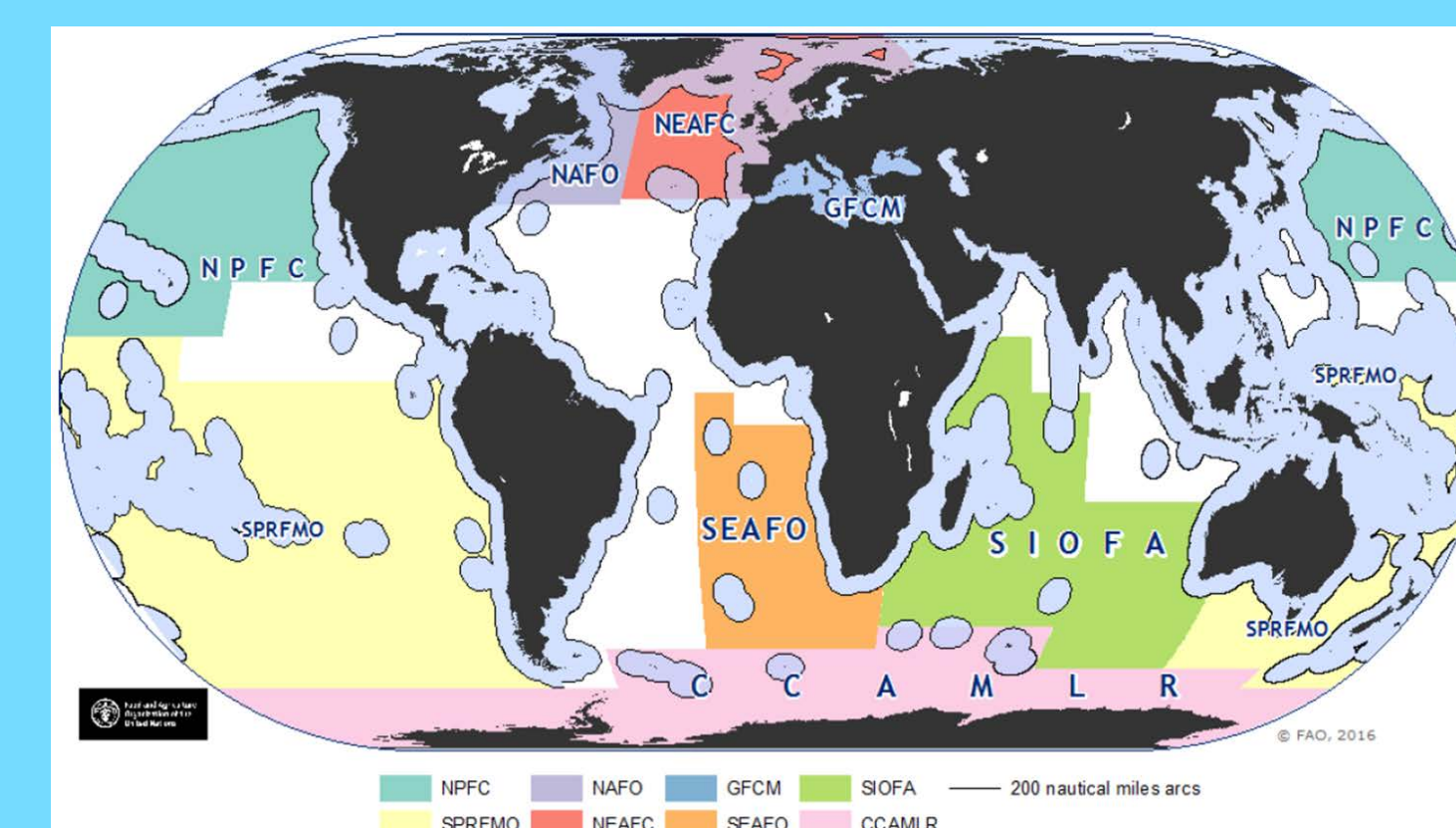
WHY

The North Pacific Fisheries Commission was formed to **bridge the gap in the management of fisheries resources and ecosystems in the North Pacific Ocean.**

FISHERIES RESOURCES COVERED BY THE CONVENTION

All fish, mollusks, crustaceans and other marine species caught by fishing vessels within the Convention Area, excluding:

- (i) sedentary species insofar as they are subject to the sovereign rights of coastal States; and indicator species of vulnerable marine ecosystems as listed in, or adopted pursuant to the NPFC Convention;
- (ii) catadromous species;
- (iii) marine mammals, marine reptiles and seabirds; and
- (iv) other marine species already covered by pre-existing international fisheries management instruments within the area of competence of such instruments.



SCIENCE

The Scientific Committee (SC) provides a forum for consultation and cooperation among Members with respect to the evaluation and exchange of scientific information relating to the fisheries of the Convention Area and offers advice and recommendations on any issues pertaining to the scientific basis for the decisions of the Commission.

NPFC FISHERIES:

SPECIES	WHO FISHES	EFFORT and CATCH
North Pacific armorhead & Splendid alfonsino 	JAPAN, KOREA, RUSSIA	2019-2020: 2-6 vessels on Emperor Seamounts (2.0-3.2k mt)
Sablefish 	CANADA	2019-2020: 1 vessel operated

Bottom fisheries

Pelagic fisheries

SPECIES	WHO FISHES	2020 EFFORT and CATCH
SQUIDS 	CHINA, JAPAN, RUSSIA, CHINESE TAIPEI, VANUATU	369 vessels (69k mt)
PACIFIC SAURY 	CHINA, JAPAN, KOREA, RUSSIA, CHINESE TAIPEI, VANUATU	259+ vessels (+Jpn) (140k mt)
CHUB MACKEREL 	CHINA, JAPAN, RUSSIA	154+ vessels (+Jpn) (446k mt)
SARDINE 	CHINA, JAPAN, RUSSIA	148+ vessels (+Jpn) (1,008k mt)

HOW

In accordance with the SC five-year Research Plan, the SC **priority research areas** are:

- Stock assessments for target fisheries and bycatch species
- Ecosystem approach to fisheries management
- Data collection, management and security

SC ACTIVITIES AND PROJECTS FOR 2021

- Intersessional scientific meetings
From March to November
Objective: to check the progress of the implementation of the Work Plan and plan intersessional activities
- Meetings of TWG CMSA, SSC BF-ME, SSC PS and SC
22-25 Jun, 8-11 Oct, 7-18 Dec
Objective: to provide scientific advice on the management of the priority species and protection of marine ecosystems in the NPFC Convention Area
- Joint SC-TCC-COM Working Group on Management Strategy Evaluation for Pacific Saury
Objective: to steer a management strategy evaluation process for Pacific saury

COMPLIANCE

7 CMMs are general for all fisheries:
 CMM on Vessel Registry
 CMM on IUU Vessels
 CMM on Transshipment
 CMM on Vessels without Nationality
 CMM on High Seas Boarding and Inspection
 CMM on Compliance Monitoring Scheme
 CMM on Vessel Monitoring System

During the past six years of operations, the Commission has adopted 13 legally binding **conservation and management measures (CMM)** to sustainably use the fisheries resources in the Convention Area and protect its ecosystems. These are contained in the Sustainable Use and Conservation Handbook found at <https://www.npfc.int/sustainable-use-and-conservation-handbook-0>

6 CMMs deal with species/group of species:
 CMM for Bottom Fisheries and VME Protection in NW Pacific
 CMM for Bottom Fisheries and VME Protection in NE Pacific
 CMM for Chub Mackerel
 CMM for Pacific Saury
 CMM for Sablefish
 CMM for Japanese Sardine, Neon and Japanese Flying Squids

In 2020, the Technical and Compliance Committee updated its Work Plan to move towards the implementation of a Regional VMS as part of the Monitoring, Control and Surveillance System to ensure compliance of Members with the NPFC regulations. As of July 2020, there are a total of 43 NPFC authorized patrol vessels, 25 USA, 3 Japanese, 3 Chinese Taipei, 8 Russian, and 4 authorized by China. There are currently 36 vessels on the NPFC IUU Vessel List.

Data-driven Fisheries Management

Effective fisheries management is data-driven. Decision-making based on hard facts and data has become an essential part of any successful program. The Commission bases its management approach on scientific analyses of data and evaluates compliance schemes according to the data provided by Members. Clear, verifiable and complete data will provide the platform from which the Commission will succeed in meeting its sustainable management objectives.

Current Data Management System

- NPFC Web page, including collaboration site and meeting management system.
- VMS
- Online vessel registry
- High Seas Boarding and Inspection Portal
- Geospatial Mapping
- Electronic Annual Report
- Electronic IUU Vessel List
- Datawarehouse

Future Developments

- CMS Tools
- Observer Program
- Stock Assessment Tools
- Harvest Control Rules

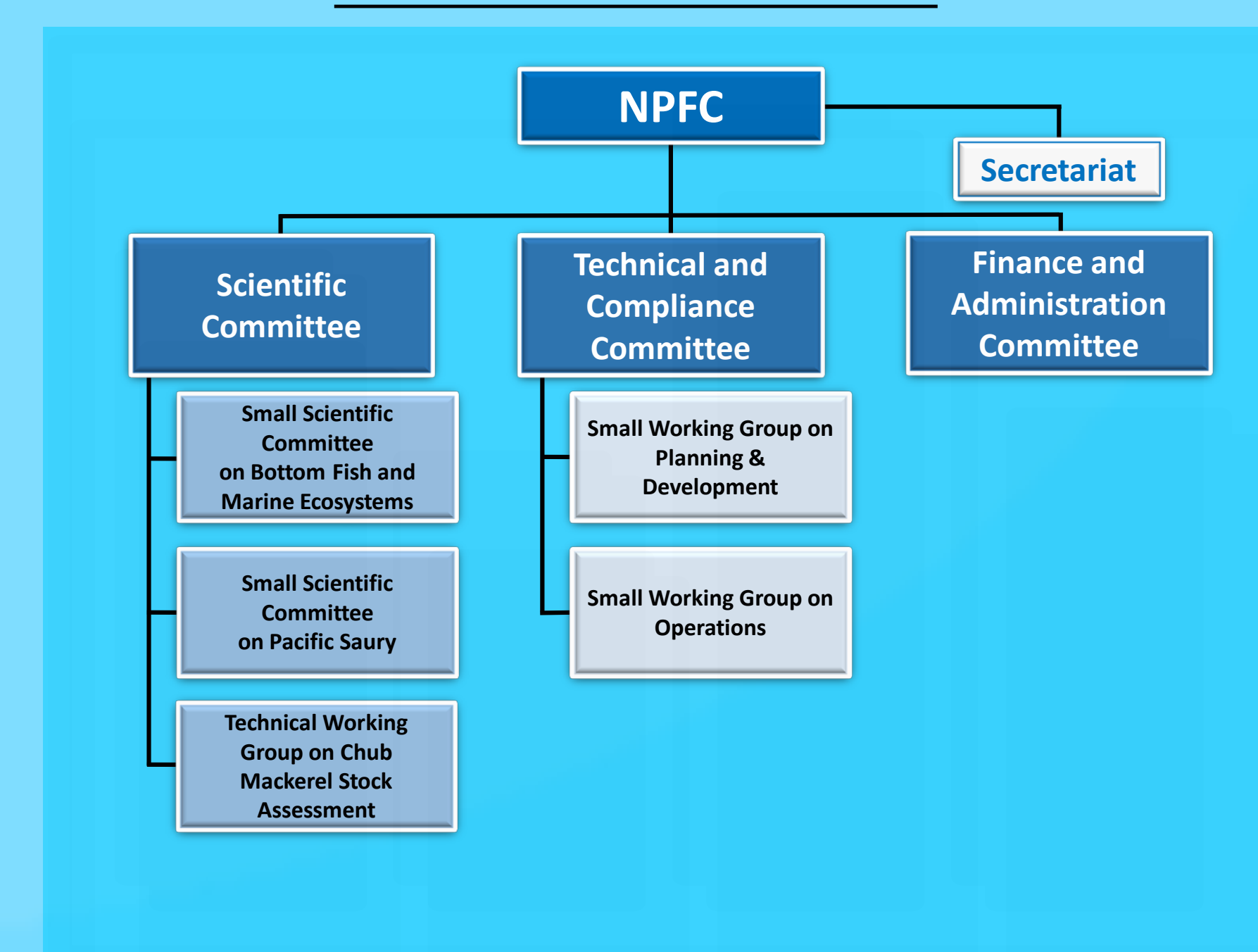
NPFC project: Mapping catch and effort

Objective: to publicize catch and effort statistics of Pacific saury and bottom fish and analyze their spatial patterns and temporal trends

NPFC projects: Fish Identification Guide

Objective: to produce a common NPFC field guide for identification of fish species

CURRENT NPFC STRUCTURE



Visit www.npfc.int for more information