

California Cooperative Oceanic Fisheries Investigations

NOAA/NMFS – Southwest Fisheries Science Center
UCSD – Scripps Institution of Oceanography
California Department of Fish And Game



California Cooperative Oceanic Fisheries Investigations

NMFS - NOAA

| CDF&G

| IOD - SIO

www.calcofi.org



“The canneries themselves fought the war by getting the limit taken off fish and catching them all.” John Steinbeck



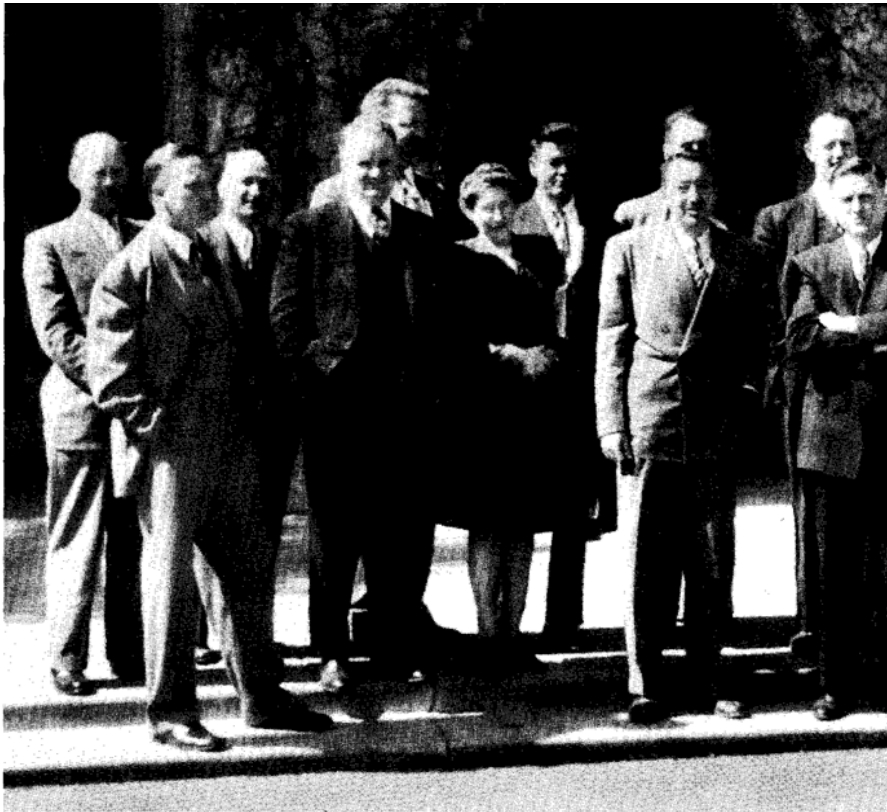
California Cooperative Oceanic Fisheries Investigations

NMFS - NOAA

| CDF&G

| IOD - SIO

| www.calcofi.org

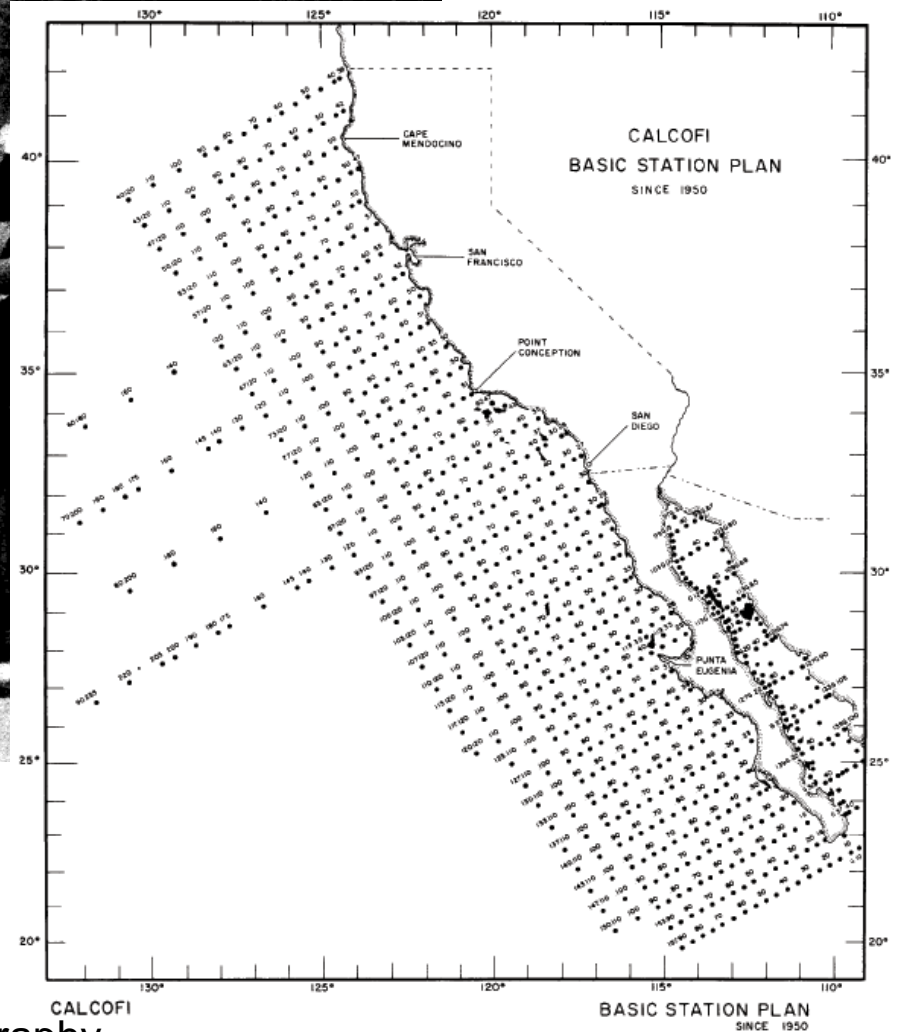


Stanford 1947

Sampling started in 1949

2 – 5 ships every month

Physical, chemical and biological oceanography



California Cooperative Oceanic Fisheries Investigations

NMFS - NOAA

| CDF&G

| IOD - SIO

www.calcofi.org

Station observations

- Vertical profiles of temperature, salinity, chlorophyll, oxygen, irradiance, light transmission, optical particle counts
- Discrete (Niskin bottle) measurements of inorganic nutrients, primary production, dissolved oxygen, phytoplankton species composition, plant pigments
- Net samples of fish eggs and larvae, zooplankton, juvenile and adult fish



California Cooperative Oceanic Fisheries Investigations

NMFS - NOAA

| CDF&G

| IOD - SIO

www.calcofi.org



Underway observations

- Continuous underway fish egg sampler
- Acoustic Doppler current profiler
- Multi-frequency active acoustics
- Passive acoustics
- Marine mammals and seabirds
- Sea surface temperature, salinity, chlorophyll, dissolved oxygen
- Sea state and meteorological conditions



California Cooperative Oceanic Fisheries Investigations

NMFS - NOAA

| CDF&G

| IOD - SIO

| www.calcofi.org

Products

- CalCOFI Conference
- *CalCOFI Reports*: peer-reviewed journal
 - Review of fisheries
 - State of the California Current
 - Proceedings of symposia of specific topics
 - Scientific contributions
- *CalCOFI Atlas* series
 - Maps of physical and biological properties
 - Taxonomic descriptions of biota
- Research papers, book chapters, graduate student theses



California Cooperative Oceanic Fisheries Investigations

NMFS - NOAA

| CDF&G

| IOD - SIO

www.calcofi.org



CALIFORNIA COOPERATIVE OCEANIC FISHERIES INVESTIGATIONS

NMFS - NOAA | CDF&G | IOD - SIO

News

Cruises

Data

Publications

Conference

Info

Search

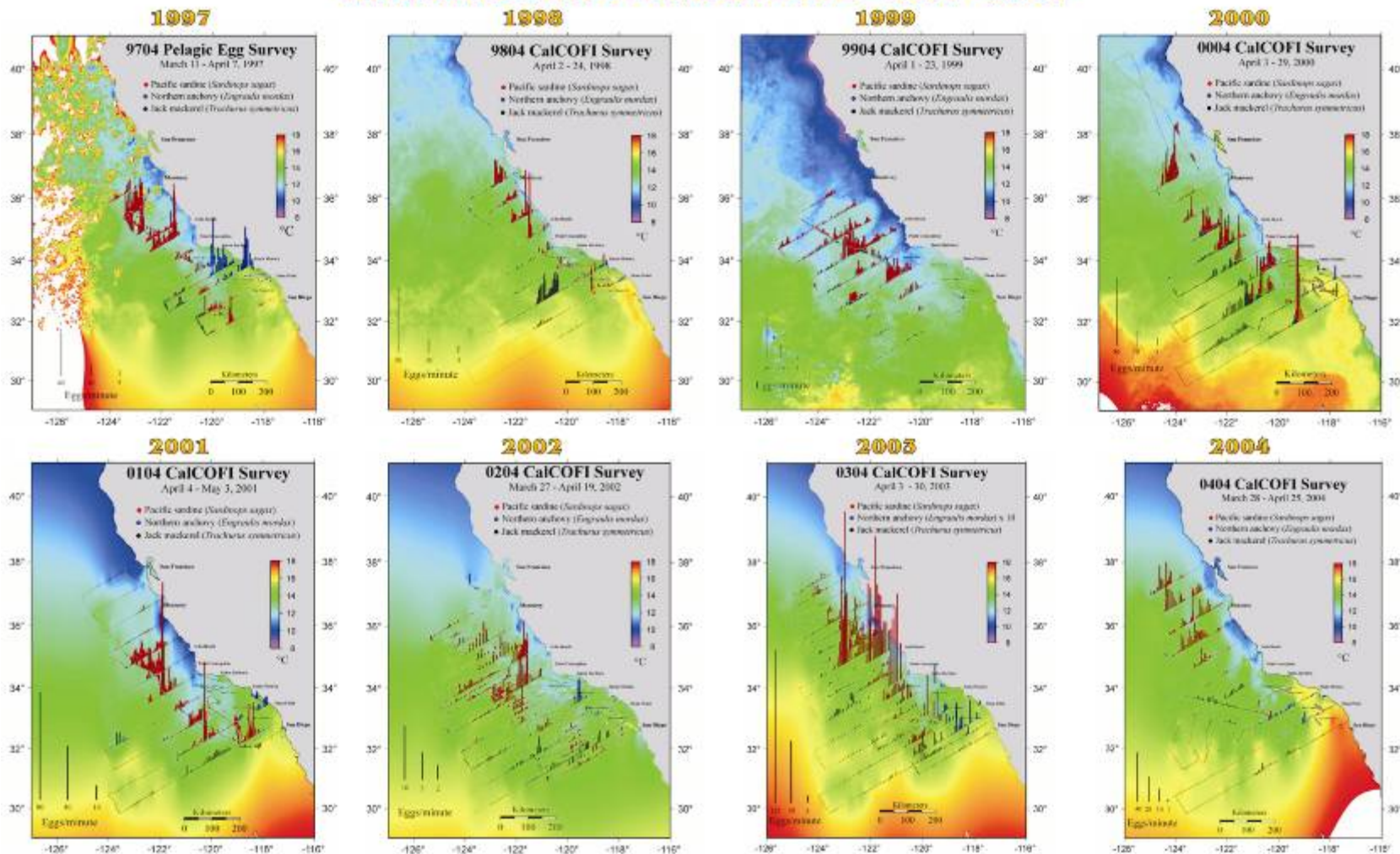


CalCOFI research is supported by contributions of these agencies.

[Home] [News] [Cruises] [Data] [Publications] [Conference] [Info] [Search]

© 2006 www.calcofi.org

SPATIAL DISTRIBUTION OF EGG DENSITY PACIFIC SARDINE, NORTHERN ANCHOVY AND JACK MACKEREL WITH SEA SURFACE TEMPERATURE - 1997 - 2004



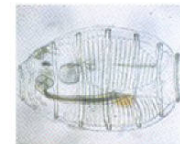
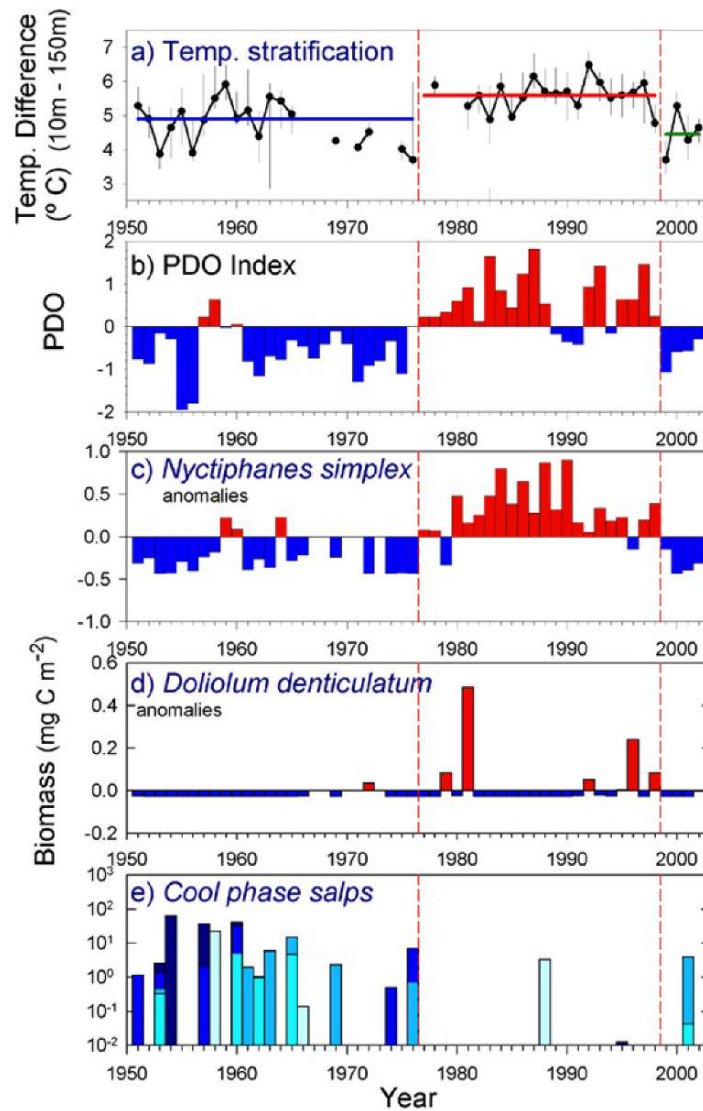
California Cooperative Oceanic Fisheries Investigations

NMFS - NOAA

| CDF&G

| IOD - SIO

www.calcofi.org



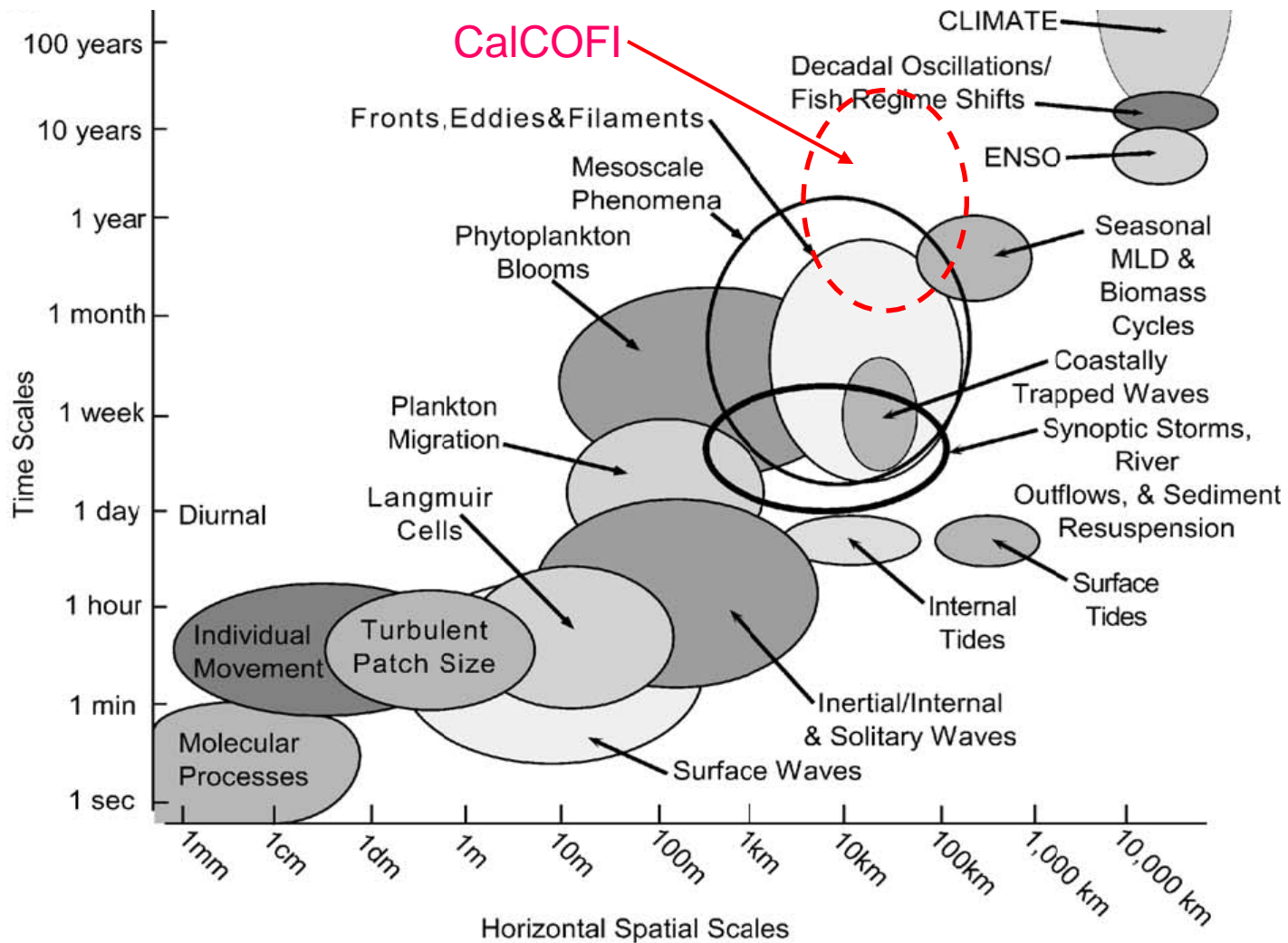
California Cooperative Oceanic Fisheries Investigations

NMFS - NOAA

CDF&G

IOD - SIO

www.calcofi.org



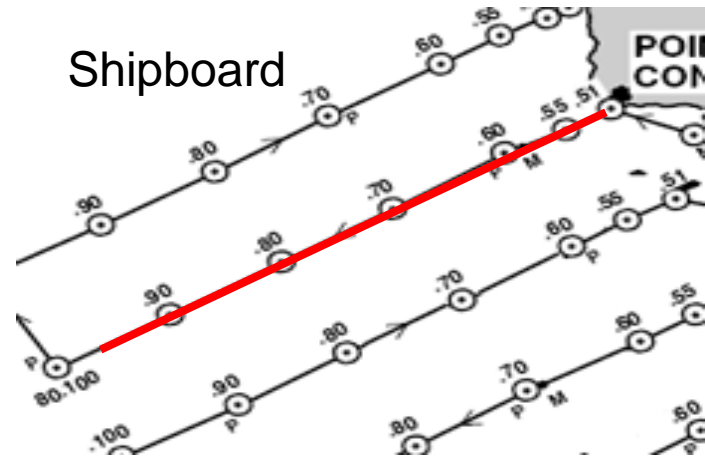
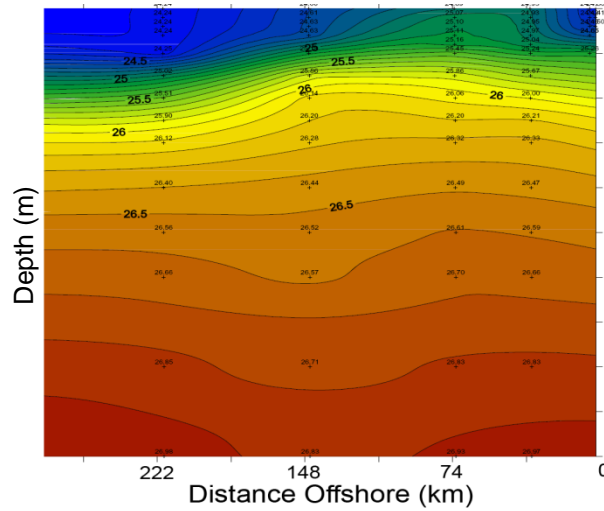
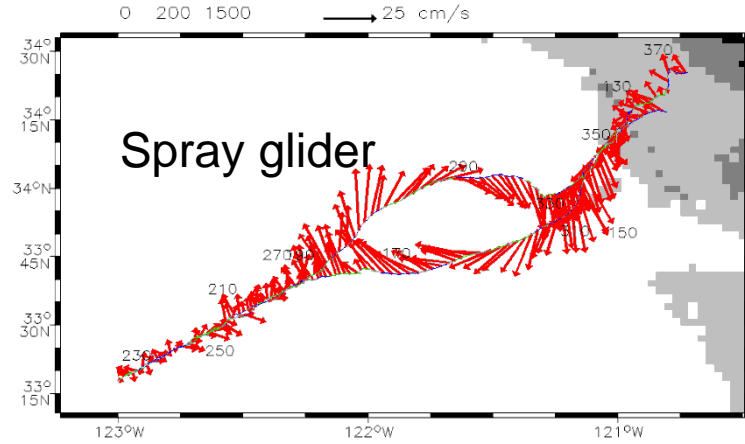
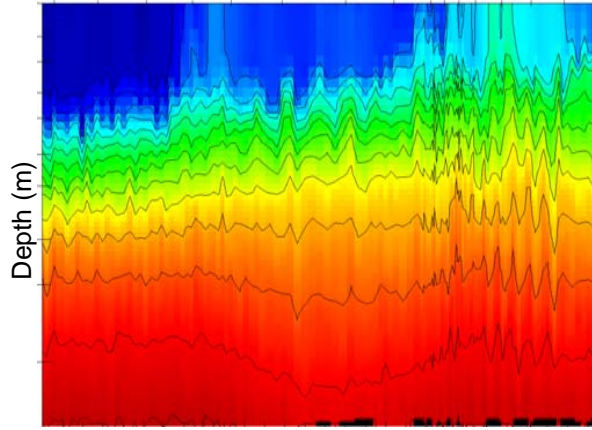
California Cooperative Oceanic Fisheries Investigations

NMFS - NOAA

| CDF&G

| IOD - SIO

www.calcofi.org



California Cooperative Oceanic Fisheries Investigations

NMFS - NOAA

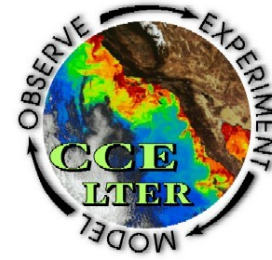
CDF&G

IOD - SIO

www.calcofi.org

CalCOFI Partnerships

- National Science Foundation - California Current Ecosystem Long-term Ecological Research Study (LTER/CCE)



- Point Reyes Bird Observatory



- Office of Naval Research



- Southern California Coastal Ocean Observing System



California Cooperative Oceanic Fisheries Investigations

NMFS - NOAA

| CDF&G

| IOD - SIO

| www.calcofi.org