

PROTECTION OF THE ARCTIC MARINE ENVIRONMENT WORKING GROUP



ARCTIC COUNCIL

PAME

Protection of the Arctic Marine Environment



ECOSYSTEM BASED MANAGEMENT



AMAP
Arctic Monitoring and Assessment Program

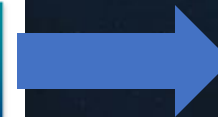
CAFF
Conservation of Arctic Flora and Fauna

EPPR
Emergency Prevention, Preparedness and Response

PAME
Protection of the Arctic Marine Environment

SDWG
Sustainable Development Working Group

ACAP
Arctic Contaminants Action Program



PAME

The Arctic Council's policy-related initiatives for the conservation and sustainable use of the Arctic marine environment.

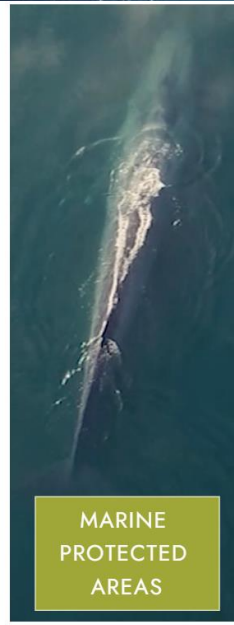
PAME MANDATE

Address *marine policy measures* related to the **conservation** and **sustainable use** of the Arctic marine and coastal environment in response to environmental change from **both land and sea-based activities**,



PAME

Protection of the Arctic Marine Environment



The role of the Ecosystem Approach - expert group is to consider the scientific and technical aspects related to the implementation of Ecosystem Based Management of the Arctic Large Marine Ecosystems.





The join expert group

Ecosystem Approach to Management



Co-lead by Dr's. Cathy Coon (NOAA) and Lis L. Jørgensen (IMR)





A humpback whale is shown breaching the ocean surface, creating a large splash of water. The whale is positioned in the center-right of the frame, with its head and back visible above the water. The background is a bright, sunlit sky, and the water is dark blue. The text "What is Ecosystem Based Management (EBM)" is overlaid on the lower half of the image.

What is Ecosystem Based Management (EBM)

The goal





The goal

Achieving sustainable use of
ecosystem goods and
services and maintenance of
ecosystem integrity.

The governance responsibility



The governance
responsibility

A comprehensive,
integrated management
of human activities



Data, knowledge and research



Data, knowledge
and research

Best available scientific
and traditional knowledge
about the ecosystem and
its dynamics

Provide advice



Provide advice

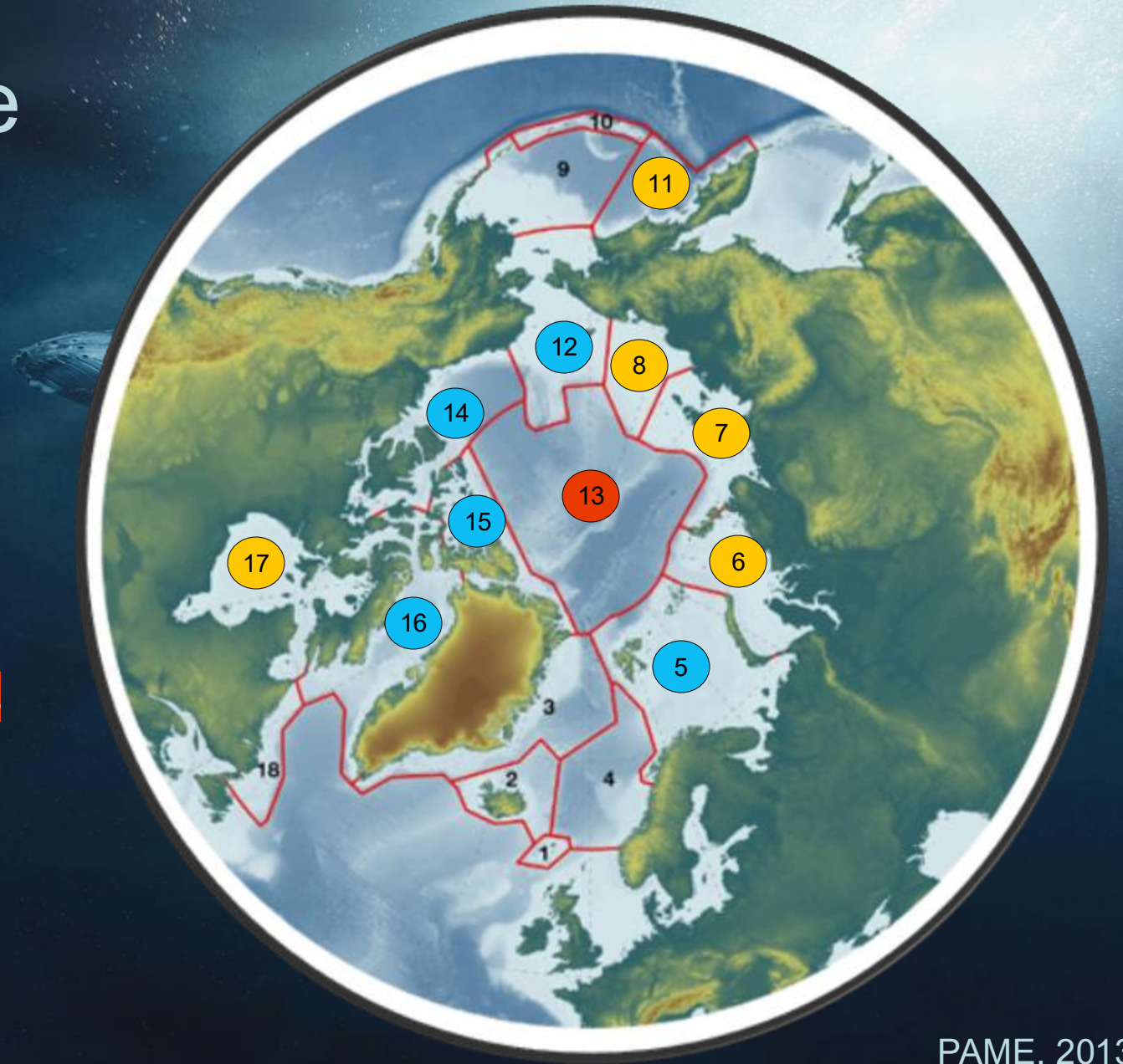
By identifying and take
action on influences that are
critical to the health
of ecosystems (... the local
communities and people)

The 18 Large Marine Ecosystems (LMEs) of the Arctic

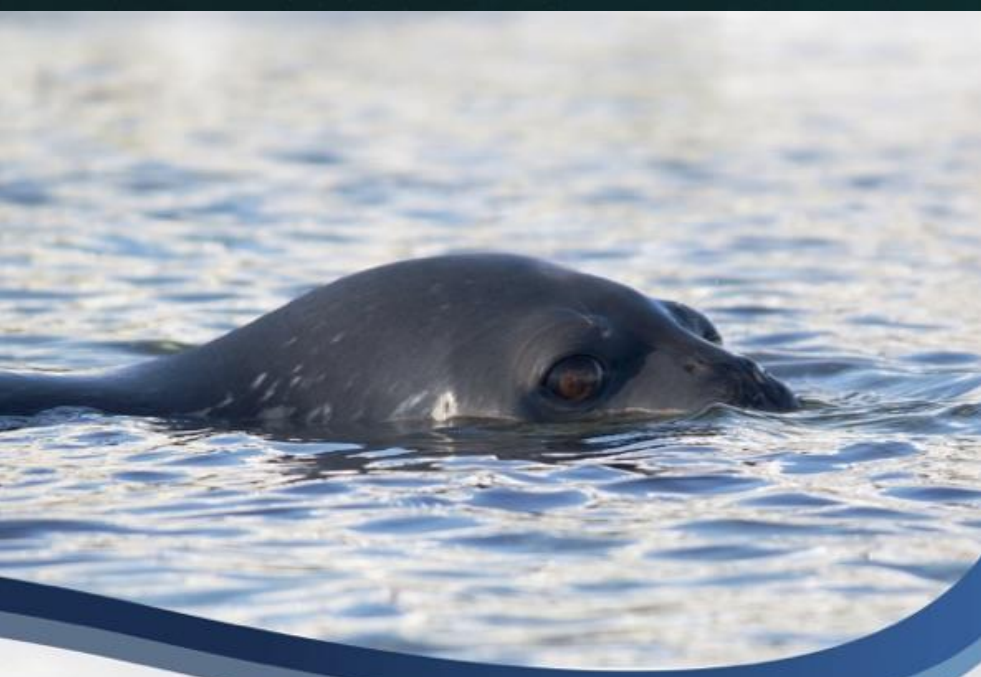
National ecosystems

Bilateral ecosystems

Multinational ecosystems with High Seas







EA Guidelines

*Implementing an
Ecosystem Approach to Management
of Arctic Marine Ecosystems*

May 2019

The 3ed International Conference Tromsø, Norway April 2024

THE 3rd INTERNATIONAL CONFERENCE ON THE ECOSYSTEM APPROACH
TO MANAGEMENT IN ARCTIC LARGE MARINE ECOSYSTEMS

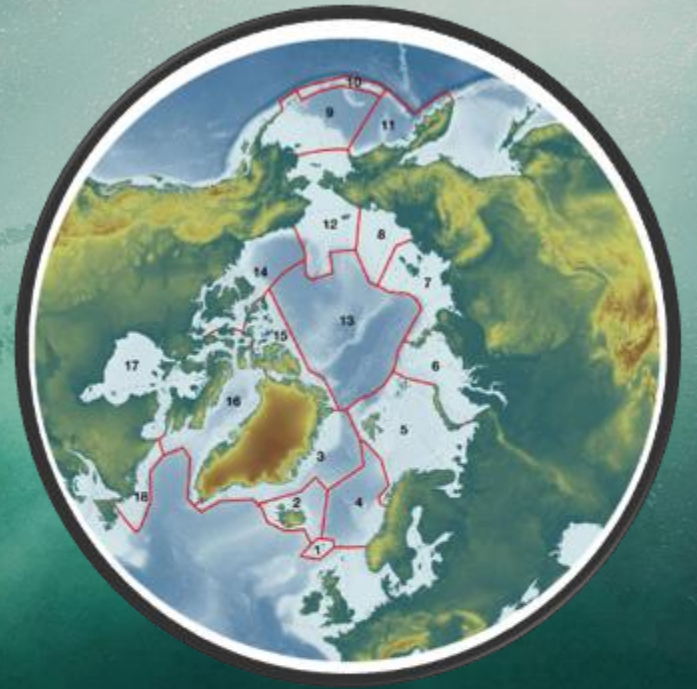
ECOSYSTEM BASED MANAGEMENT IN A RAPIDLY WARMING ARCTIC

SHARING EXPERIENCES AND CHALLENGES

CONFERENCE SUMMARY
2024



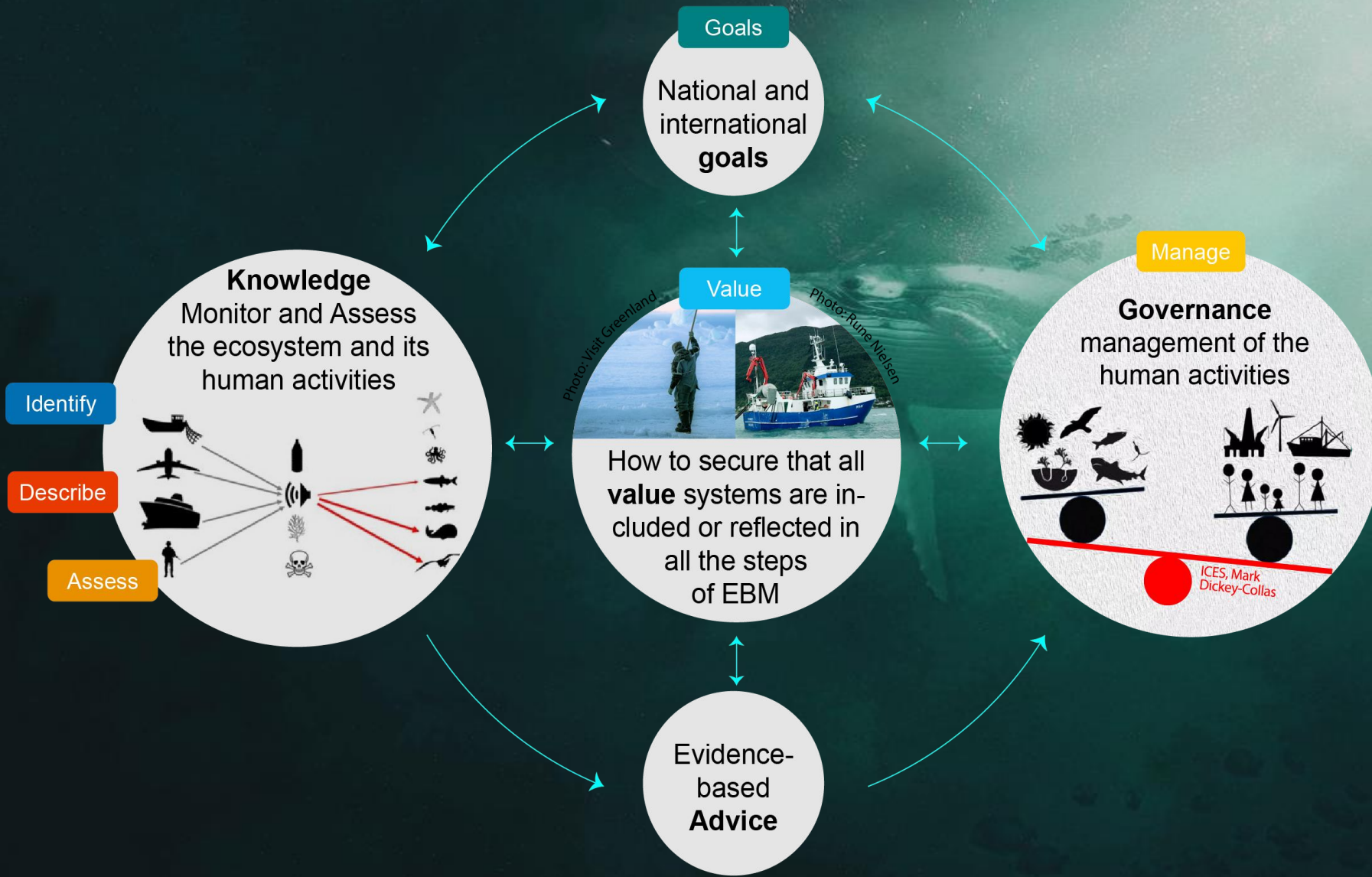
1. **Identify** the geographic extent of the ecosystem.
2. **Describe** the biological and physical components and processes of the ecosystem including humans.
3. Set ecological **objectives** that define sustainability of the ecosystem.
4. **Assess** the current state of the ecosystem (Integrated Ecosystem Assessment).
5. **Value** the cultural, social and economic goods produced by the ecosystem (*work in progress*).
6. **Manage** human activities to sustain the ecosystem.





A humpback whale is shown swimming in deep, greenish water. Sunlight filters through from the upper right, creating a bright, hazy area. The whale's head and back are visible, and its tail is partially submerged. The overall atmosphere is serene and natural.

Moved from a linier
to a circular process



7TH EA WORKSHOP: ARCTIC PEOPLES VALUES AND VALUATION

21-23 OCTOBER 2025
TROMSØ, NORWAY

A workshop to discuss **valuation methods** and governance **mechanisms** when involving the diversity of people's **values** for the **Arctic Large Marine Ecosystems**.



ARCTIC COUNCIL

OUTLINE:

- | | |
|-------|--|
| DAY 1 | Identify and understand diverse set of values held for the Arctic Large Marine Ecosystems |
| DAY 2 | Identify and understand the diversity of valuation-methods held for the Large Marine Ecosystems |
| DAY 3 | Explore ways to incorporate diverse systems of values and valuation into EBM for the Large Marine Ecosystems |



WORKSHOP
WEBSITE

Organized by the joint
EA Expert Group on
Ecosystem Approach to
Management:

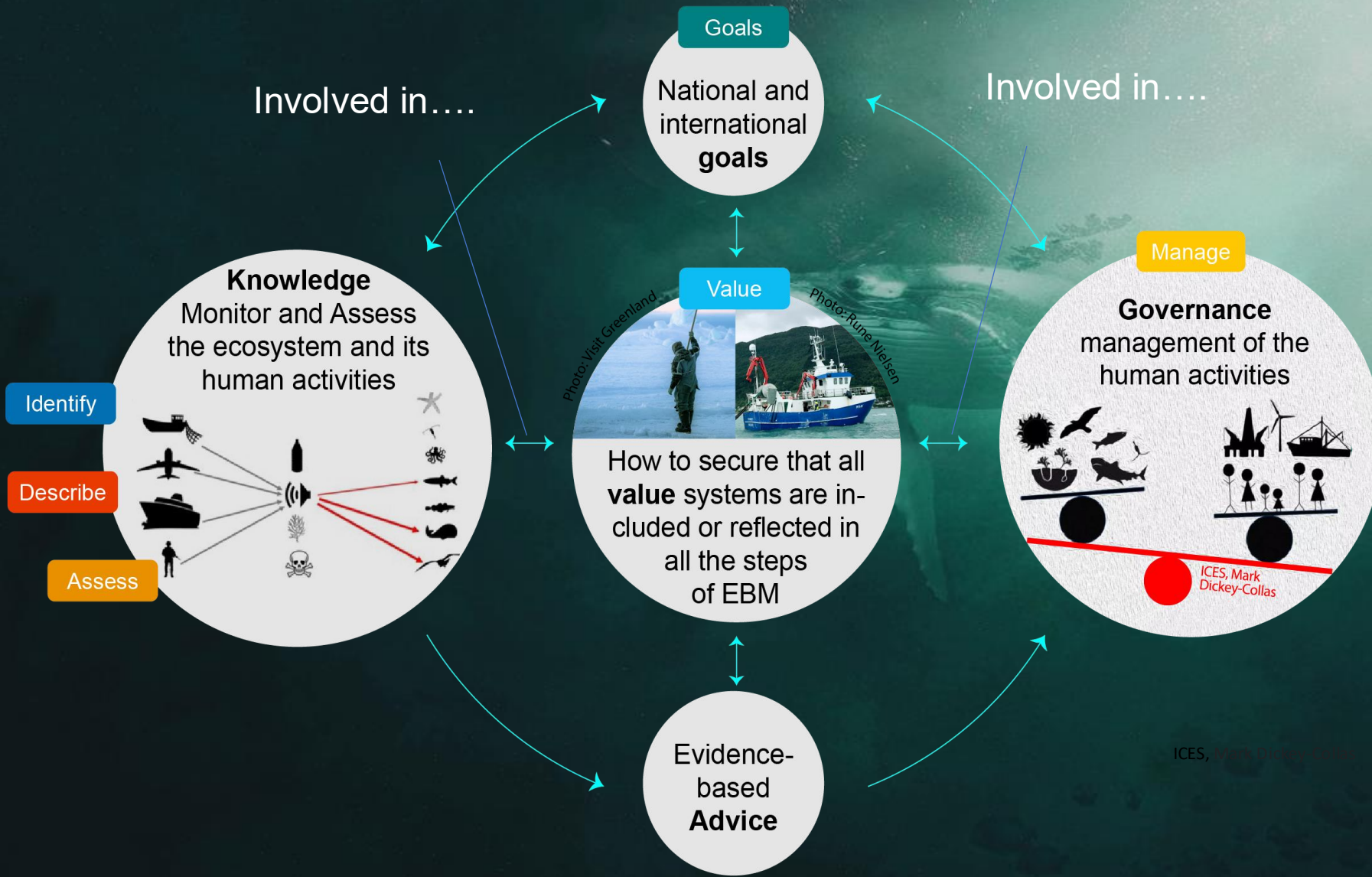
PAME
Protection of the Arctic Marine Environment

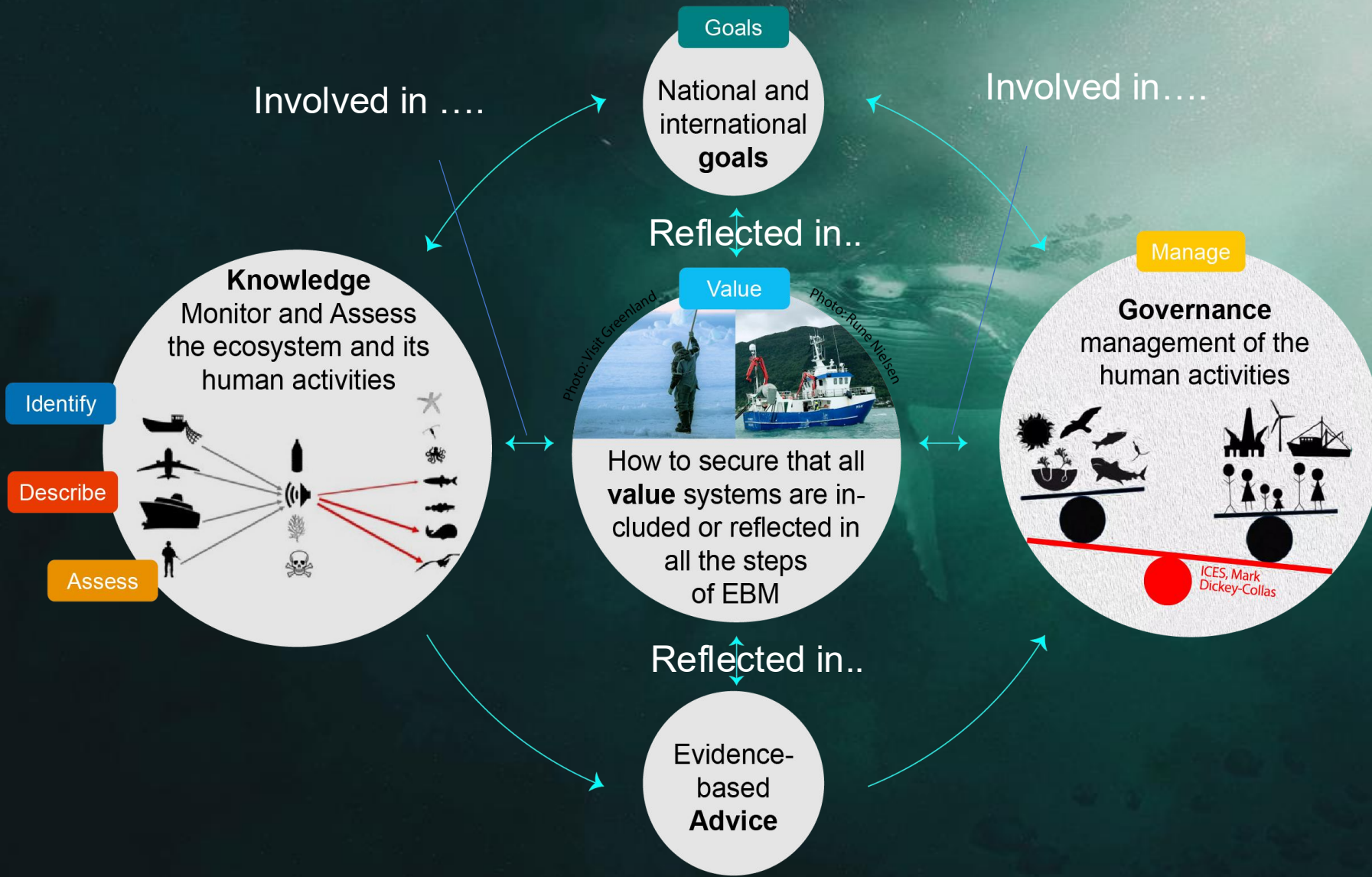
CAFF
Conservation of Arctic Flora and Fauna

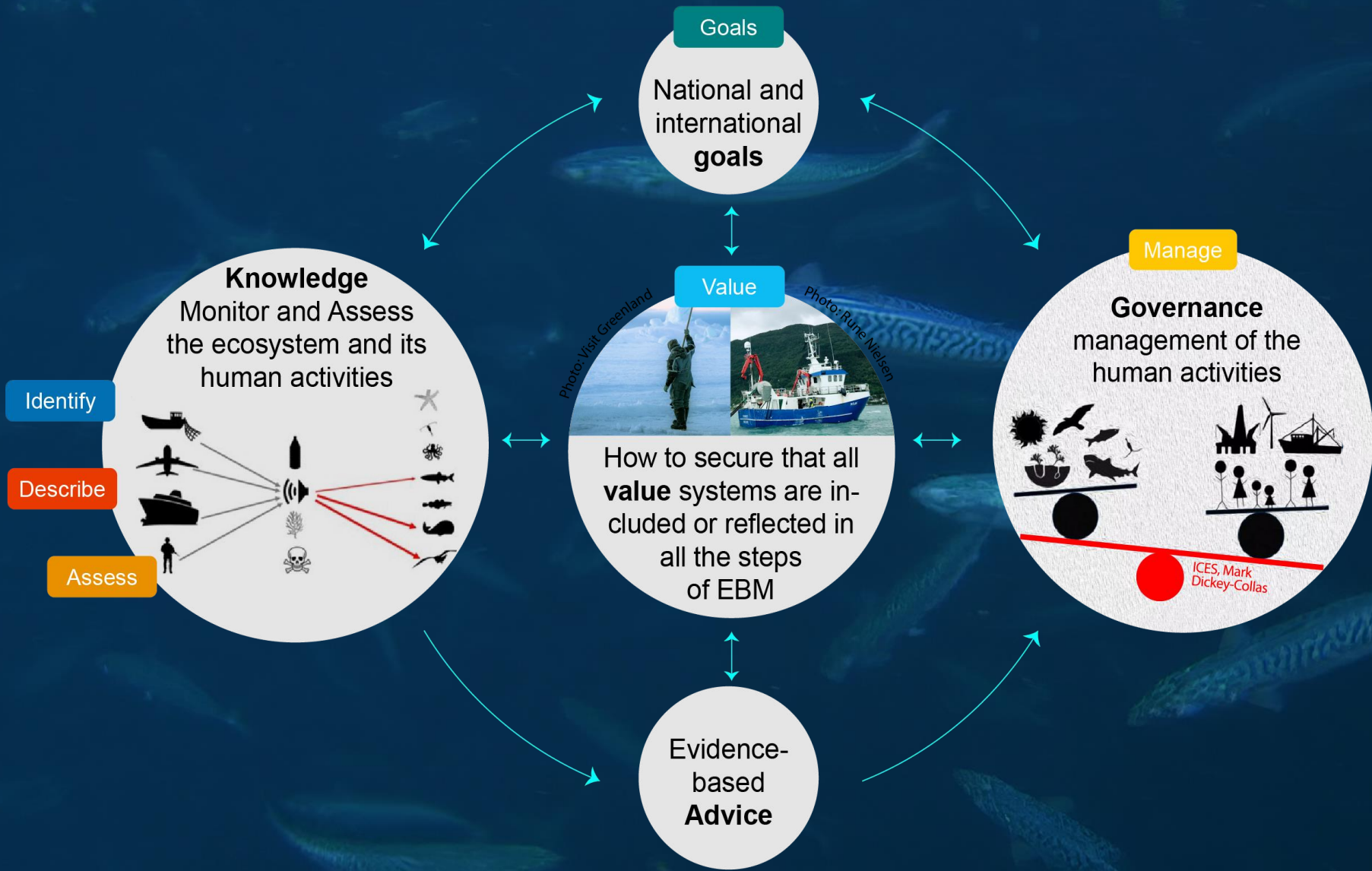
AMAP
Arctic Monitoring and Assessment Programme

Sustainable Development Working Group

Sponsored by the **Nordic Council**
of Ministers Fishery Cooperation AG-Fisk

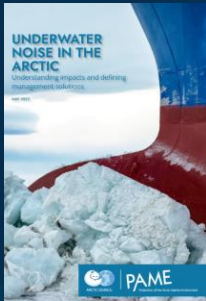
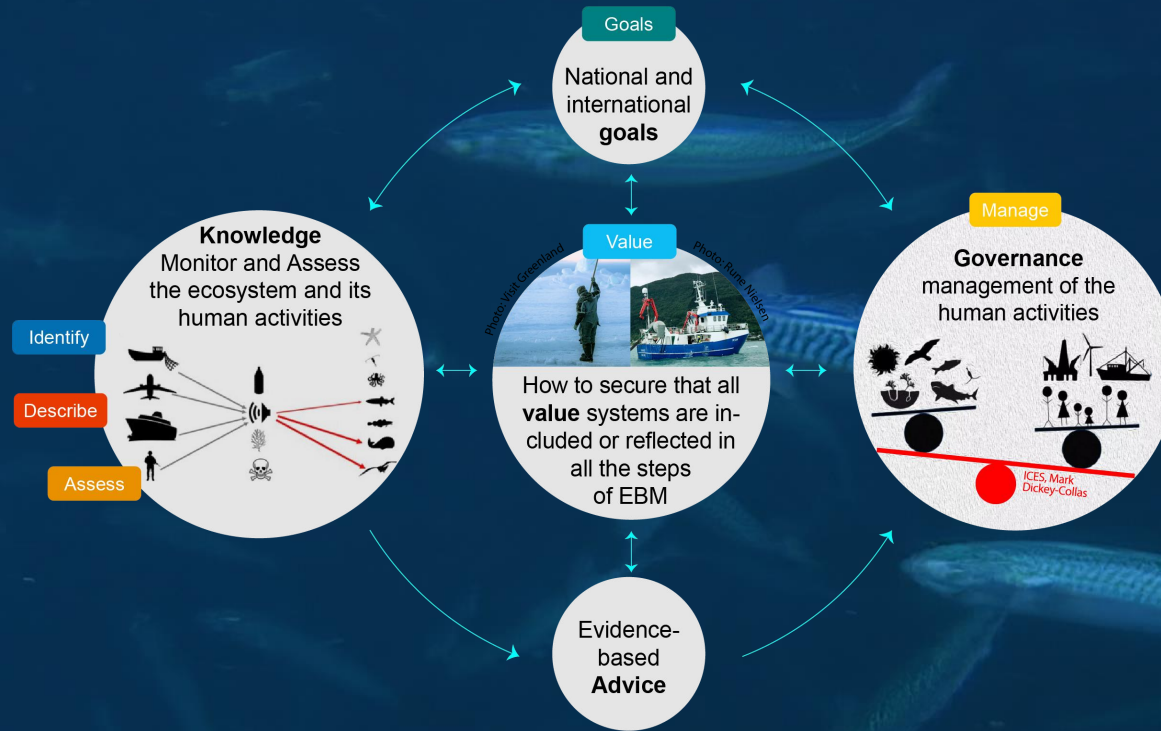






WGICA IEA

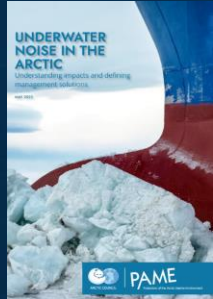
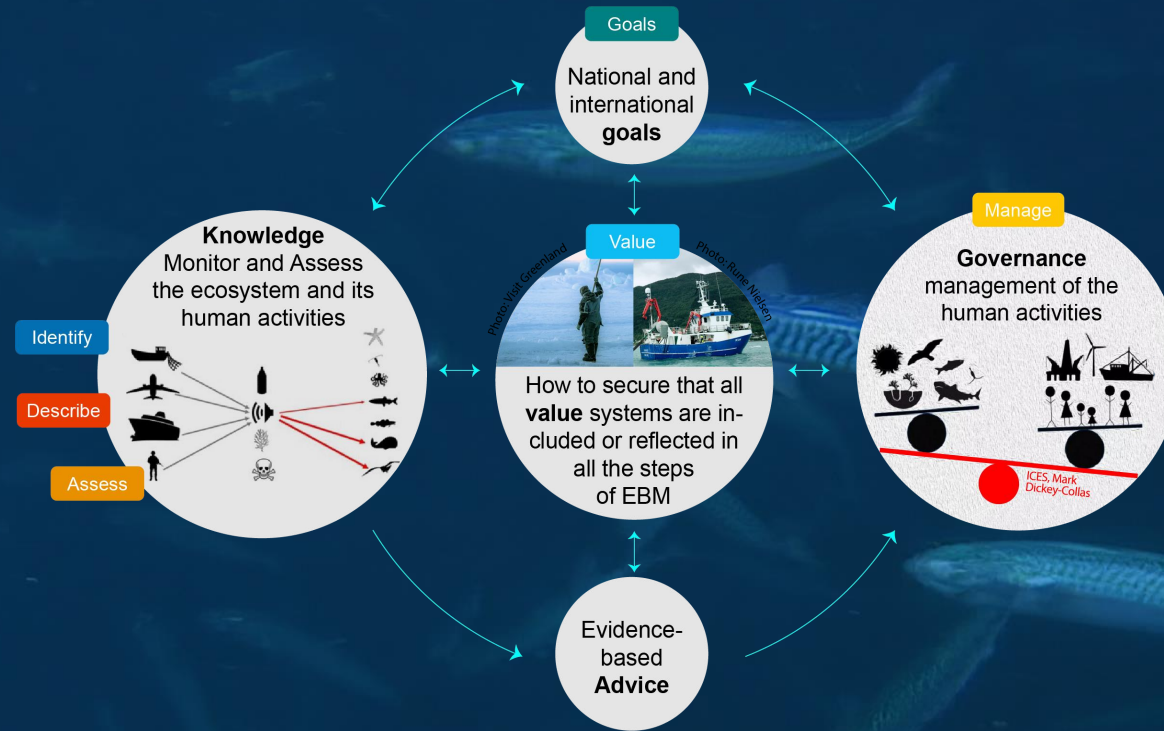
- Sea-mammals (noise)



WGICA in EBM

WGICA
IEA

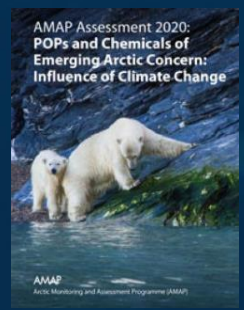
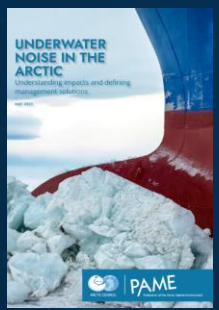
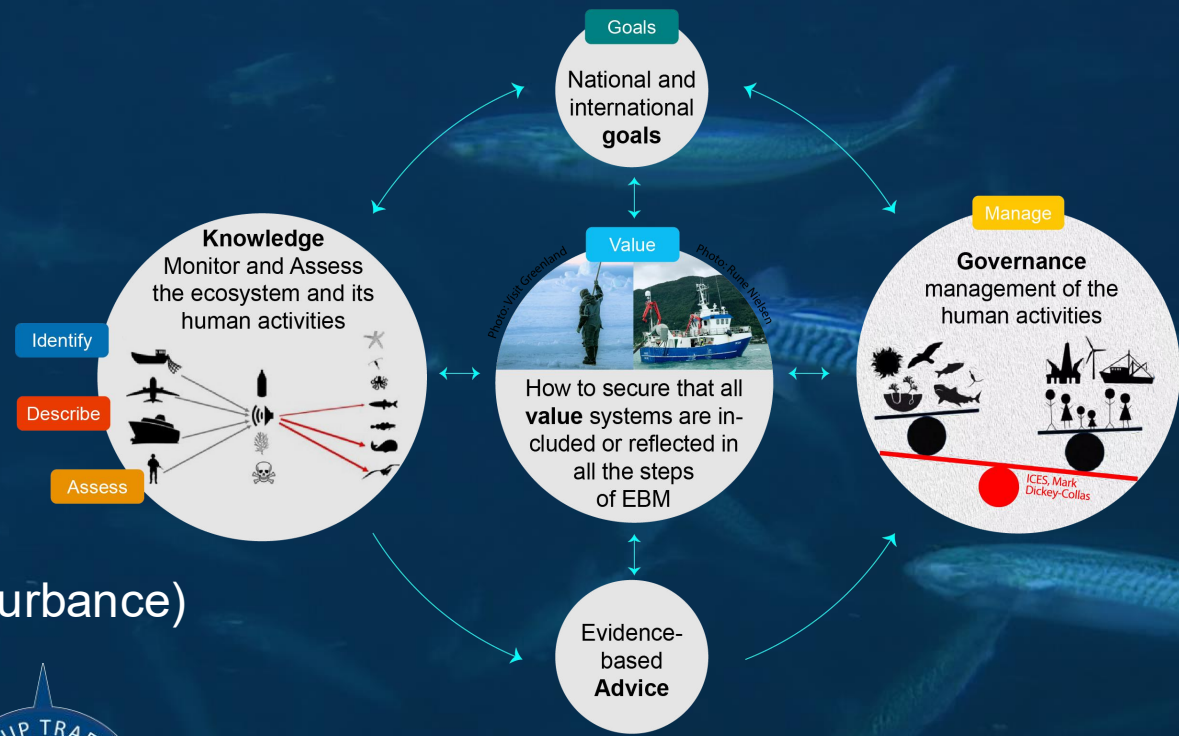
- Sea-mammals (noise)
- Sea birds (pollution)



WGICA in EBM

WGICA IEA

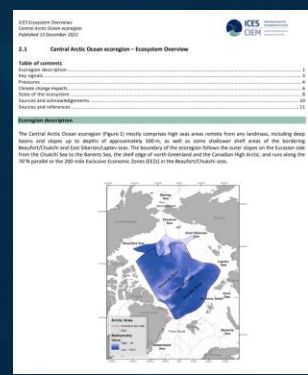
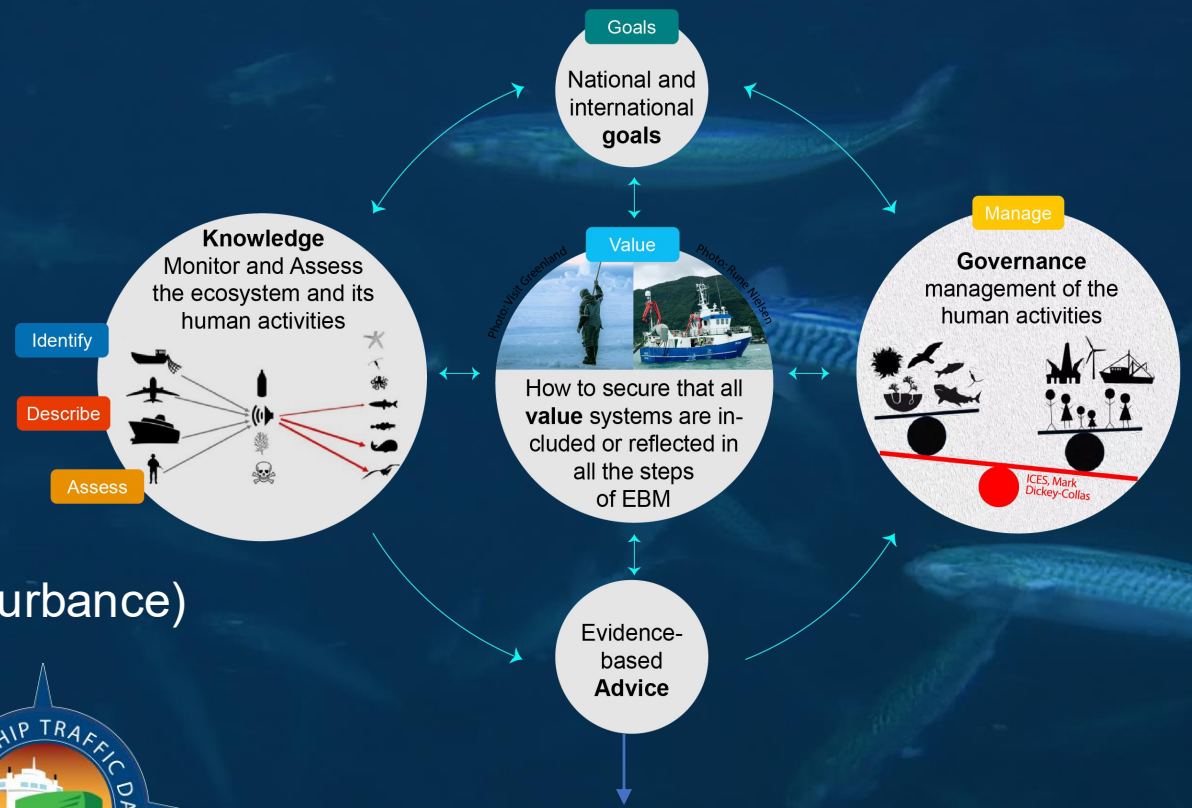
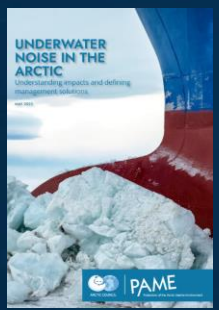
- Sea-mammals (noise)
- Sea birds (pollution)
- Benthos (physical disturbance)



WGICA in EBM

WGICA IEA

- Sea-mammals (noise)
- Sea birds (pollution)
- Benthos (physical disturbance)

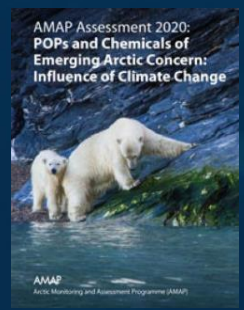
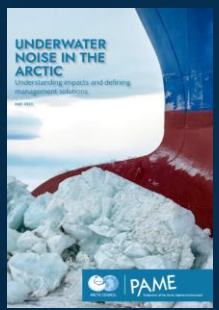


Ecosystem Overview

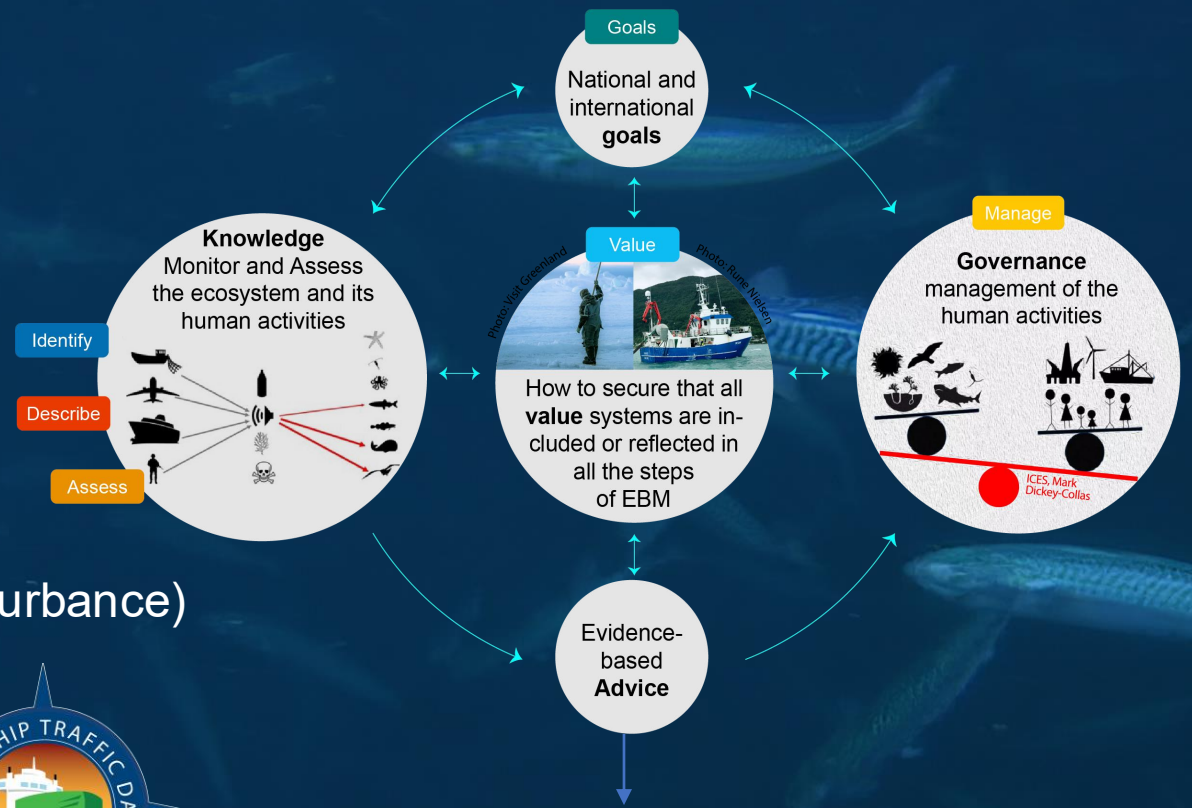
WGICA in EBM

WGICA
IEA

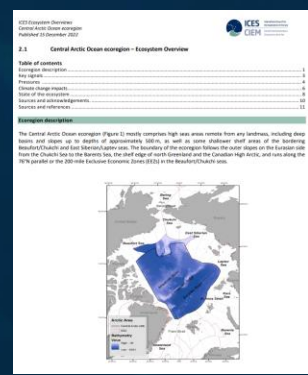
- Sea-mammals (noise)
- Sea birds (pollution)
- Benthos (physical disturbance)



MPAs
Temporal and spatial restrictions in ship traffic



CAOFA
OSPAR
Arctic Council wgs
NGOs (WWF)
....



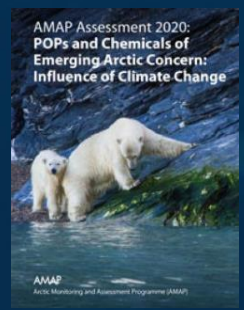
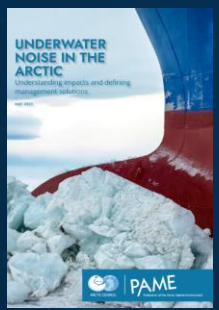
Ecosystem Overview

WGICA in EBM

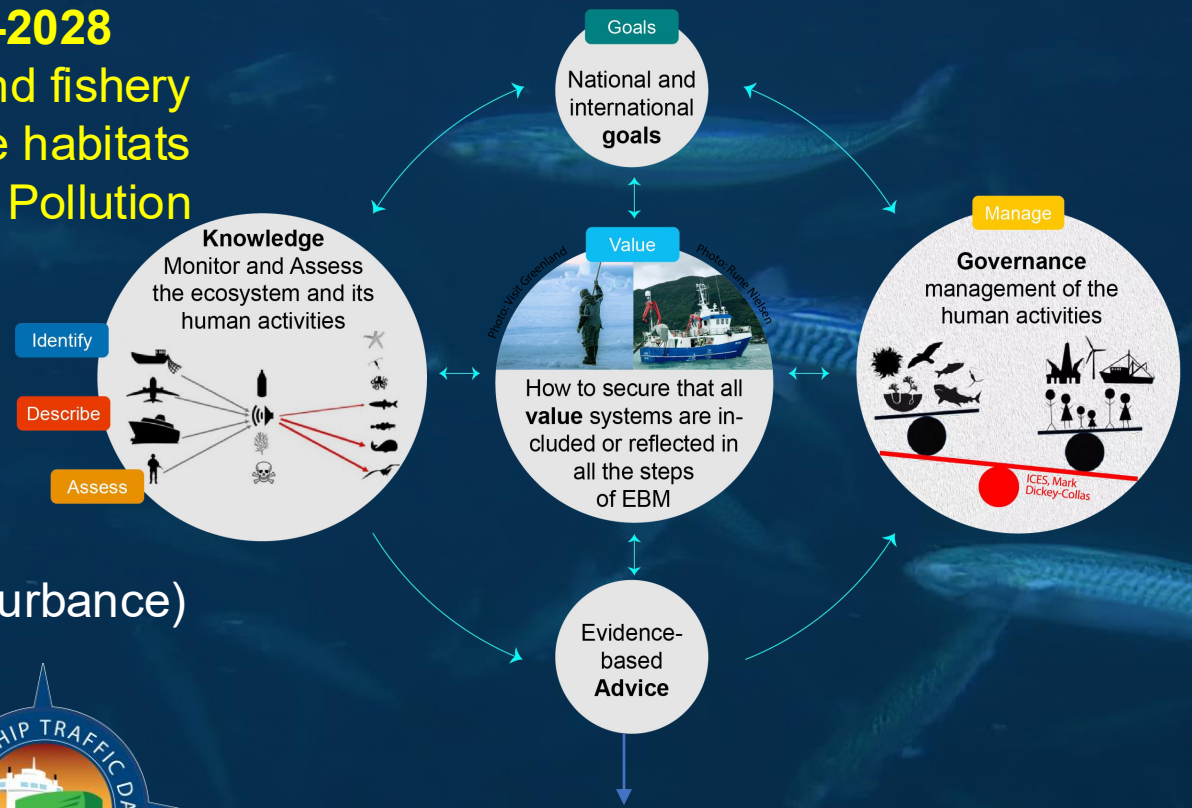
ToRs 2026-2028
Fish and fishery
Vulnerable habitats
Pollution

WGICA
IEA

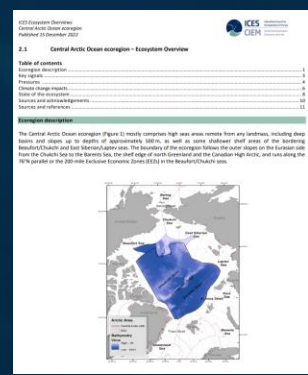
- Sea-mammals (noise)
- Sea birds (pollution)
- Benthos (physical disturbance)



MPAs
Temporal and spatial restrictions in ship traffic



CAOFA
OSPAR
Arctic Council wgs
NGOs (WWF)
....



Ecosystem Overview

ICES, Mark Dickey-Collas

End