

Fishery Statistics in Korea

June 13, 2013

Jung Hee Cho | Fishery Policy Research Division



한국해양수산개발원
KOREA MARITIME INSTITUTE

1. Number of fishing household

– *61,493 (0.3%)*

- Full time (*30.2%*), part time (*69.8%*)
- Capture fisheries (*72.7%*), aquaculture (*27.3%*)
- Size of fishing vessels, regional distribution
- Number of fishing communities
- Fishery income (*US\$ 33,981/household*)

2. Fish consumption and market

- individual sea food consumption rate (*53.5 Kg per capita*)
- number of fish whole sale market
- export/import of fishery products (*2,362/3,947 million \$*)

3. Fishing ports

- number of fishing ports (*989*)
- types of fishing port(national, regional, local etc)

4. Production (3,183,000 M/T)

- gear types
- species
- in/off shore (34.3%), aquaculture (46.8%), distant water fishery((18.05%), Inland fishery(0.88%)
- catch per unit effort(CPUE)
- area of fishing activities

5. Fish stock

- status of fish stock(TAC species)

6. Fishing vessels (75,031)

- status of fishing vessel registration
- number/size of fishing vessels
- tons of fishing vessels

7. IUU fishing

- number of IUU fishing activities
- case of IUU fishing activities

8. Others

- buy-back vessel program (624 vessels in 2012)
- aquaculture species (50 species)
- fish disease
- Inland fishery
- stock enhancement program
 - artificial reefs, fry releasing, marine ranching
 - marine seaweed forest program
- recreational fishing activities
- laws relating to fisheries
- international fishery agreements
- list of NGOs

TRADITIONAL MARINE CULTURE

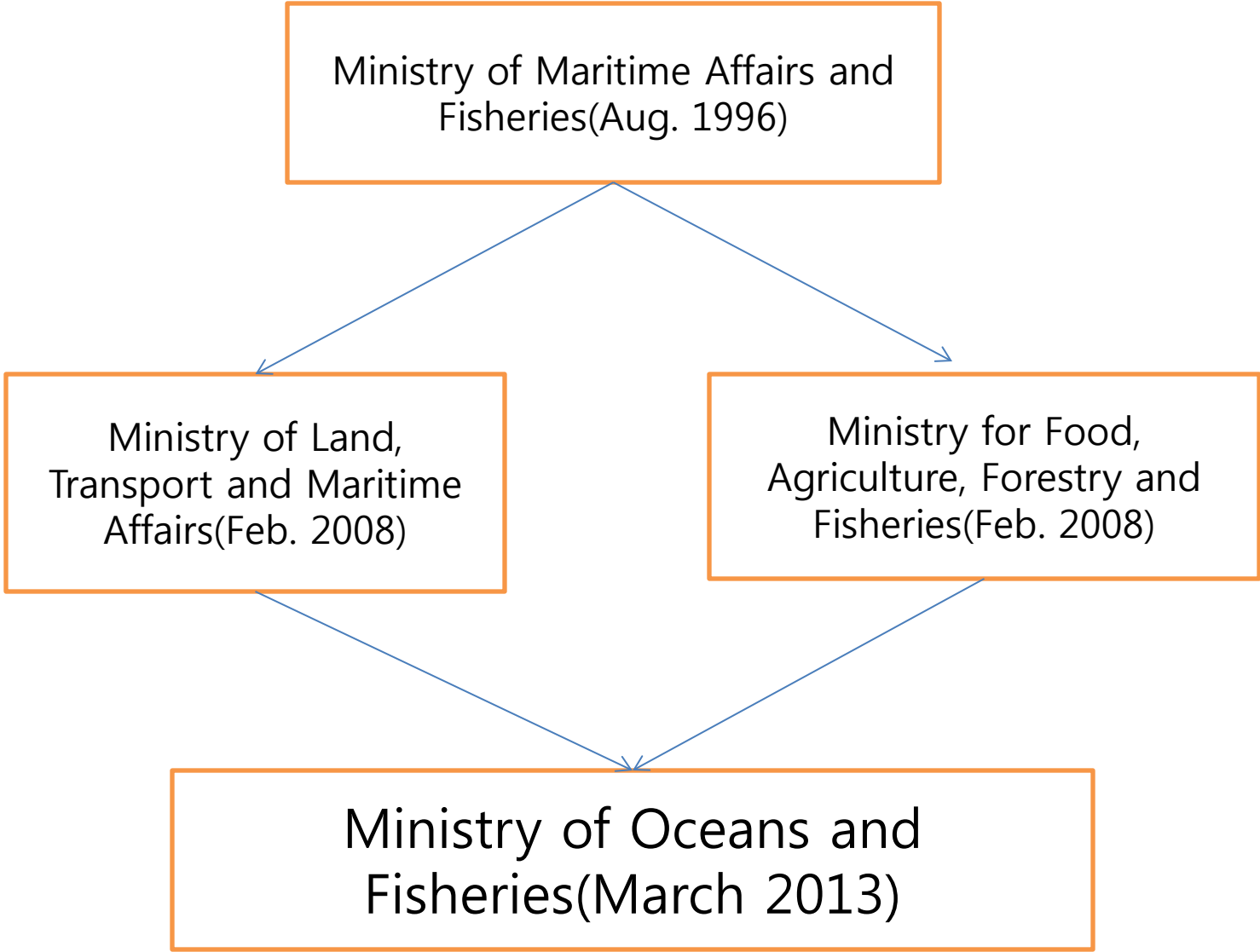
POONGEOJAE is a festival praying for more harvests and fishermen's safety



TRADITIONAL MARINE CULTURE

POONGEOJAE in Jagalchi Fish Market





Thank you!