



# Extreme marine heat wave effect on invertebrate fisheries in Western Australia

**Nick Caputi**

A Denham, M Kangas, M Feng, A Pearce, Y Hetzel, A Chandrapavan

Effects of Climate Change on World's Ocean:

Session 10: 24 March 2015



**Australian Government**  
**Fisheries Research and  
Development Corporation**

National Research  
**FLAGSHIPS**  
Wealth from Oceans



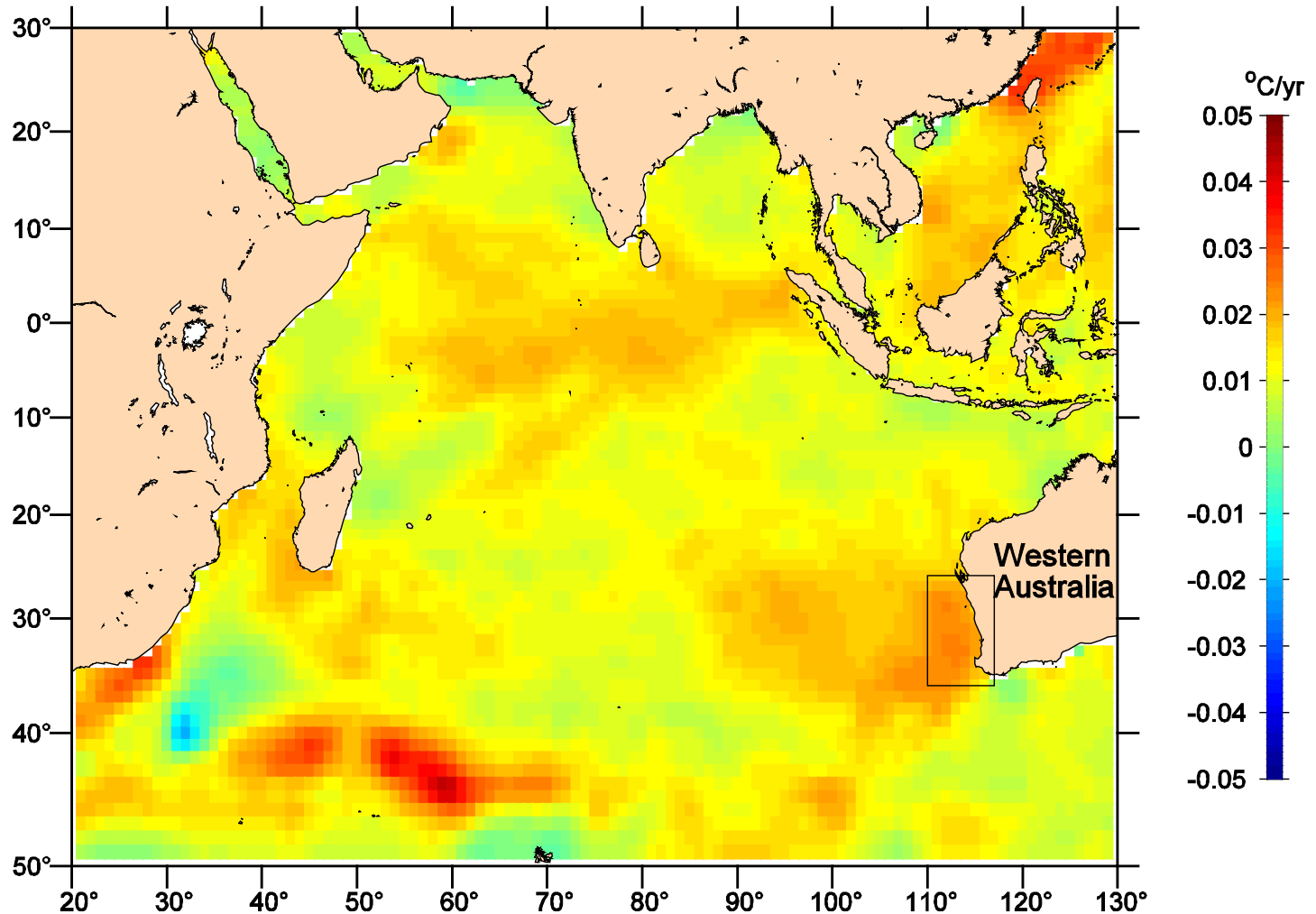
**Government of Western Australia**  
**Department of Fisheries**



# Overview

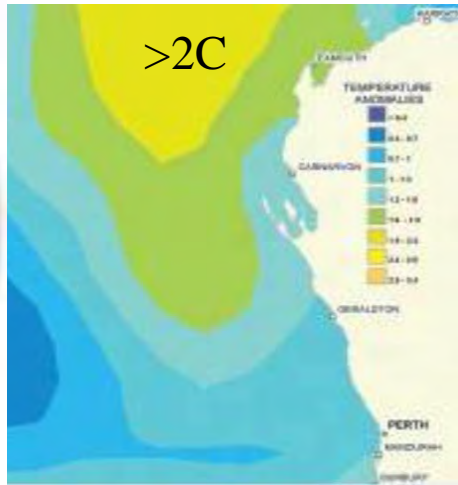
- Marine heat wave summer 2010/11 to 12/13
- Cause of heat wave
- Effect on marine environment
- Effect on invertebrate fisheries
  - Research/management/industry adaptation

# Rate of warming ( $^{\circ}\text{C}/\text{year}$ ) 1951 – 2004 (Pearce & Feng, 2007)

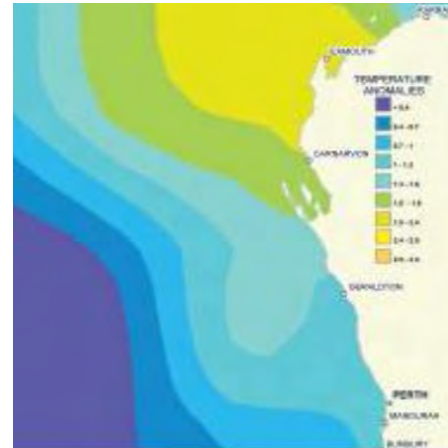


# Marine heat wave: SST anomalies

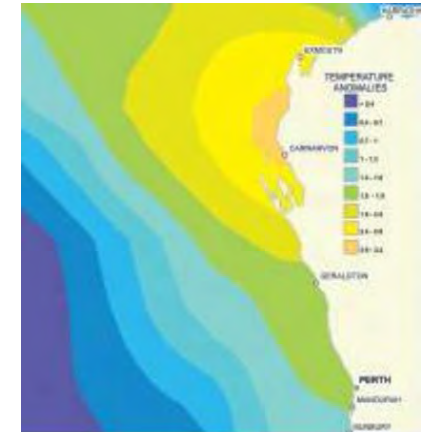
(associated with very strong La Niña)



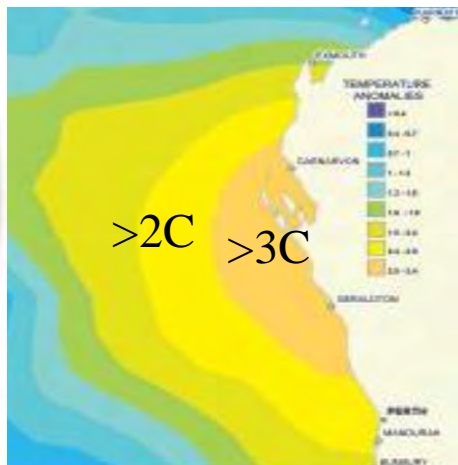
Nov 2010



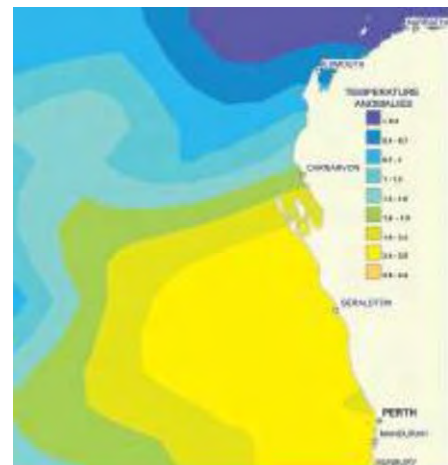
Dec 2010



Jan 2011



Feb 2011



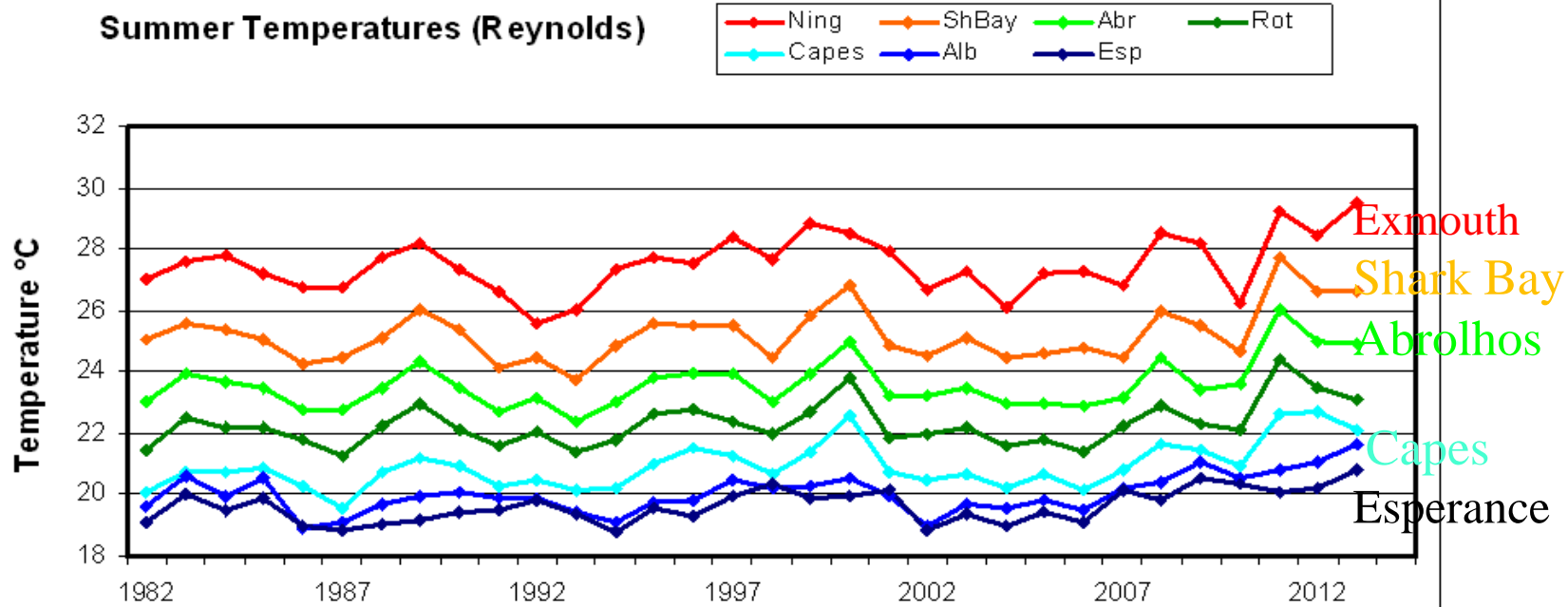
Mar 2011

- 2000 km coast
- 4-5°C anomaly at many locations

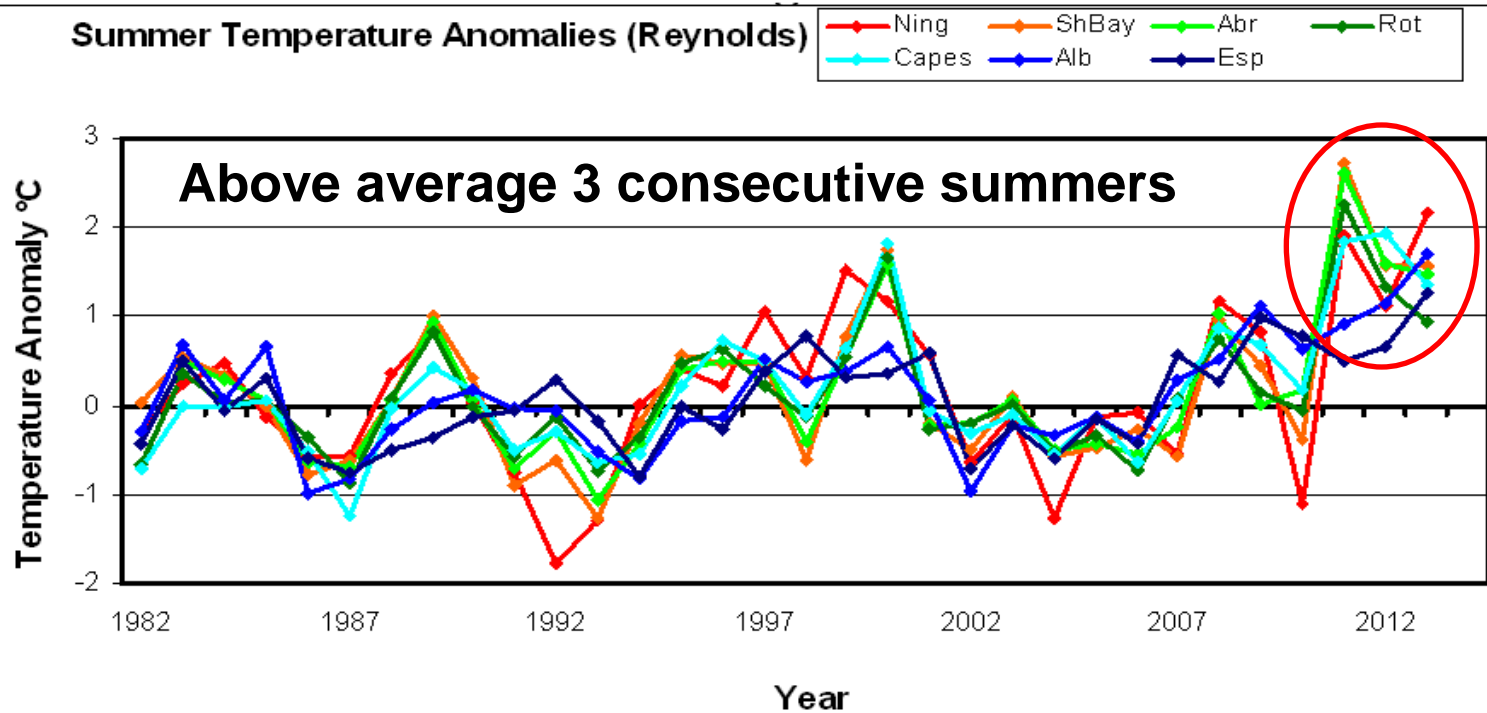
Pearce & Feng 2012



**Summer Temperatures (Reynolds)**

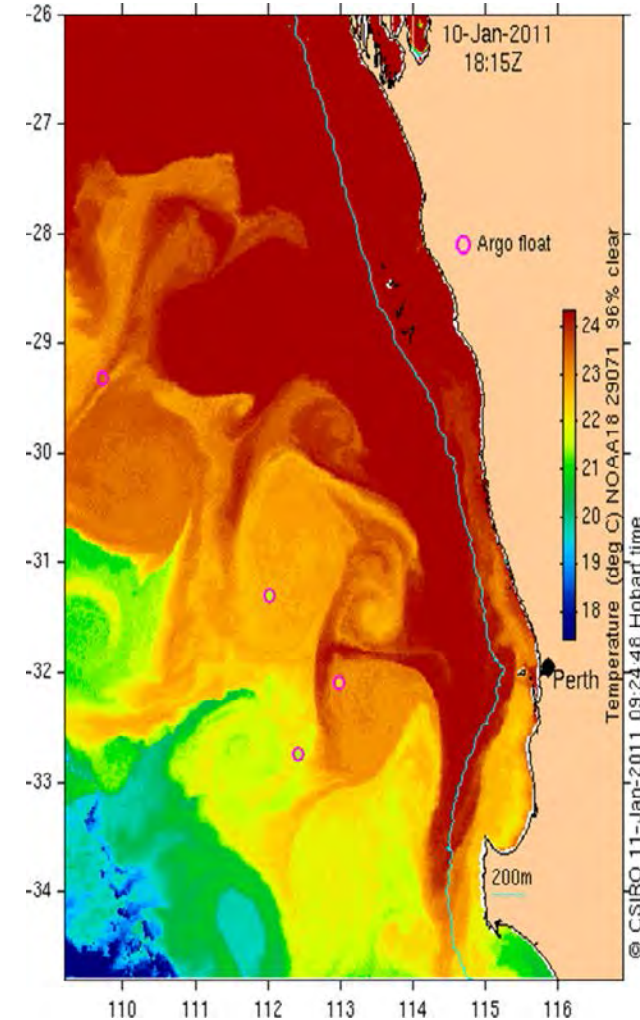


**Summer Temperature Anomalies (Reynolds)**



# Marine heat wave: perfect storm

- Seasonal to decadal processes aligned
- Strong Leeuwin Current (strong La Niña)
- Multi-decadal strengthening of tropical Pacific climate
- Long-term SST increase
- High air-sea heat flux
- Calm wind conditions late Feb (deoxygenation of water)



# Effect on Marine Community



## Immediate effects

- Tropical species range extension south
- Seagrass/algae habitat
- Coral bleaching
- Fish kills – particularly abalone (*Haliotis roei*)



## Effect on recruitment of invertebrate fisheries

- Blue swimmer crab (*Portunus armatus*)
- Scallop (*Amusium balloti*)
- King & Tiger Prawns (*Penaeus latisulcatus* & *esculentus*)



# Mid-west Roei abalone

## 99% mortality: Feb 2011



Before



After



After

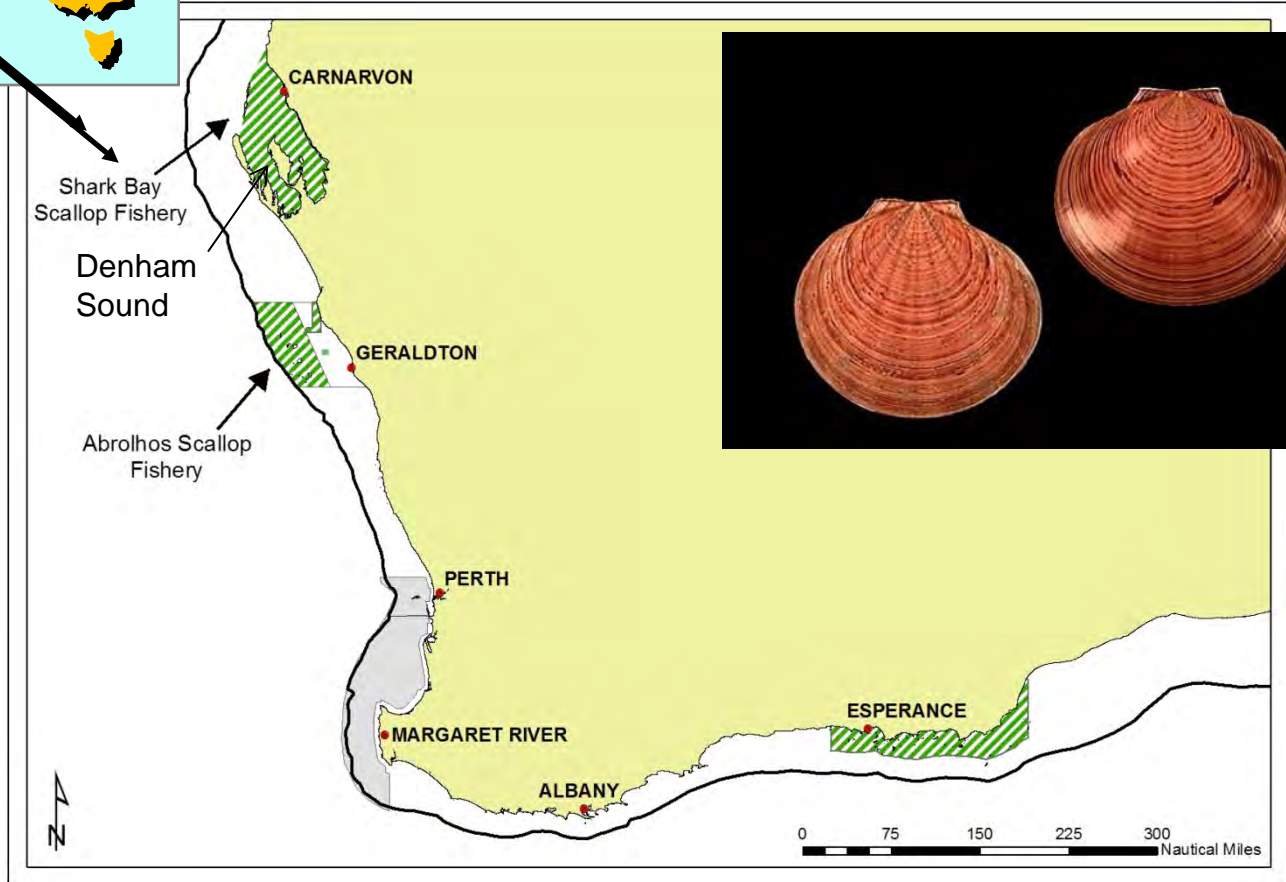
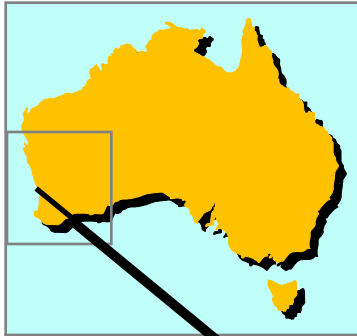


Translocation & Hatchery-reared releases



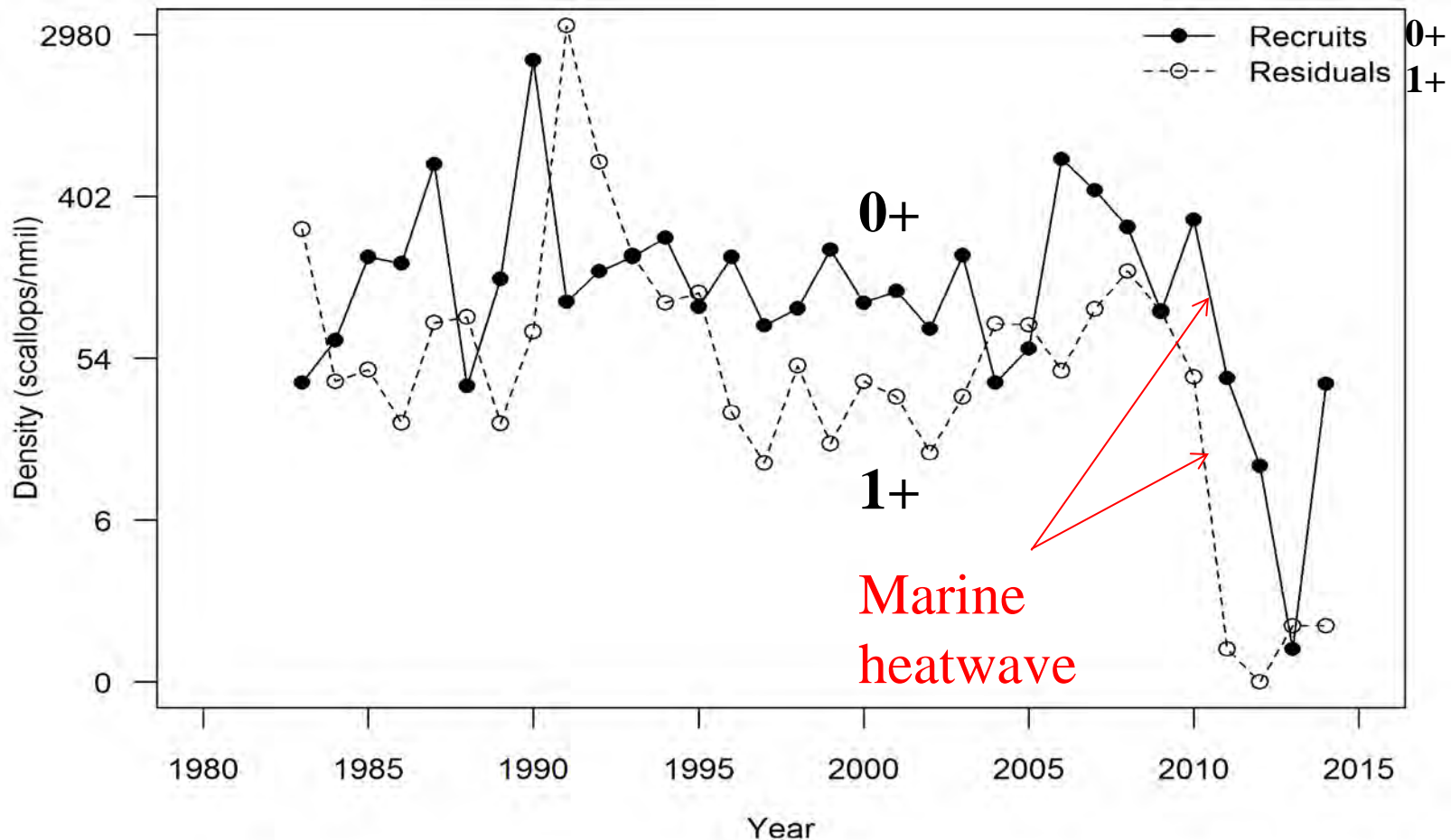
# Scallop fisheries

- 3 stocks affected by marine heat wave:  
Northern Shark Bay,  
Denham Sound,  
Abrolhos Is.



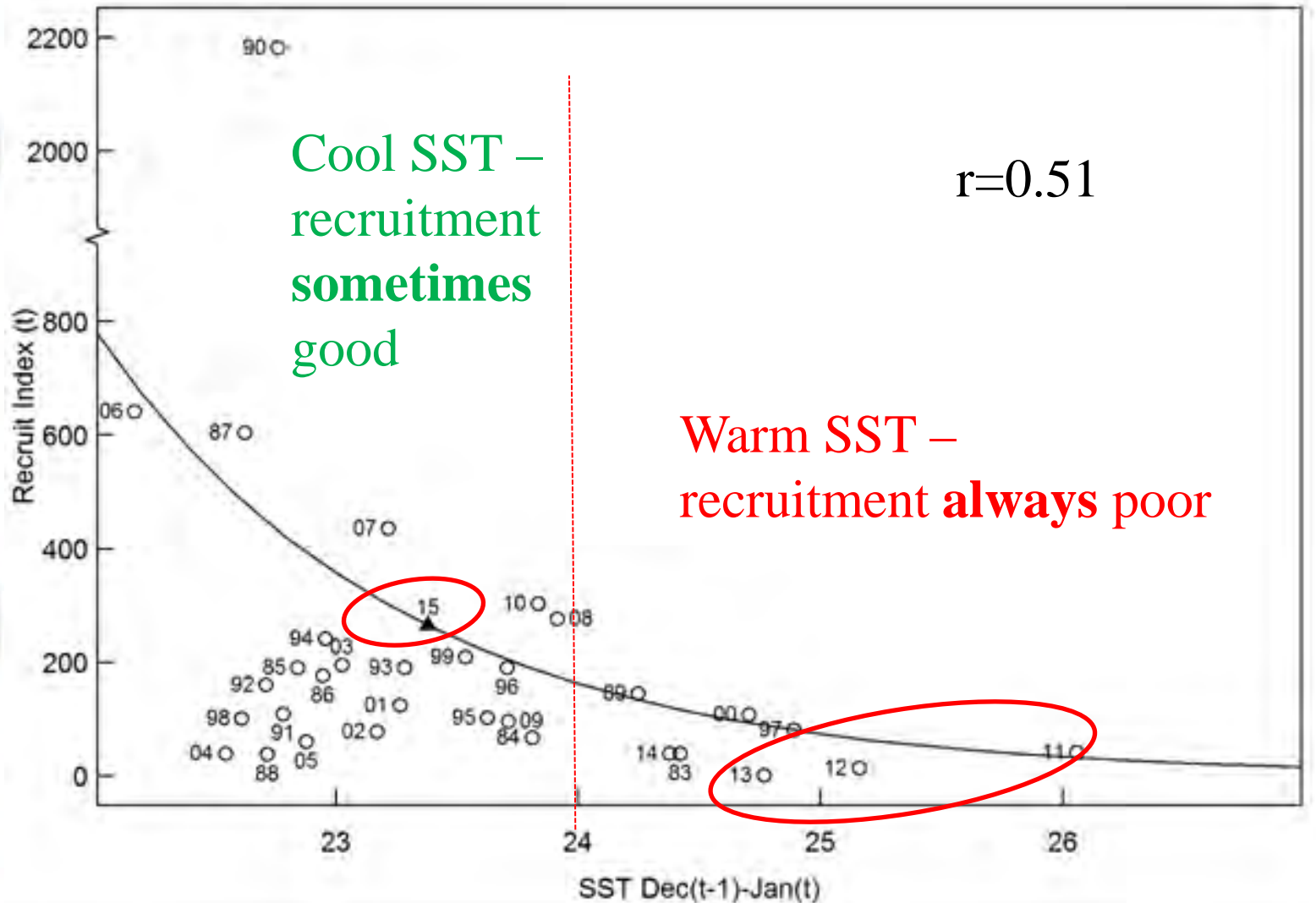
# Shark Bay scallop pre-recruit survey

- Pre-recruits (0+) reliable catch predictor 4-6 months ahead
- Poor recruitment 2011-2013 (warm SST)
- Poor spawning stock 2012-14 (**fishery closed**)

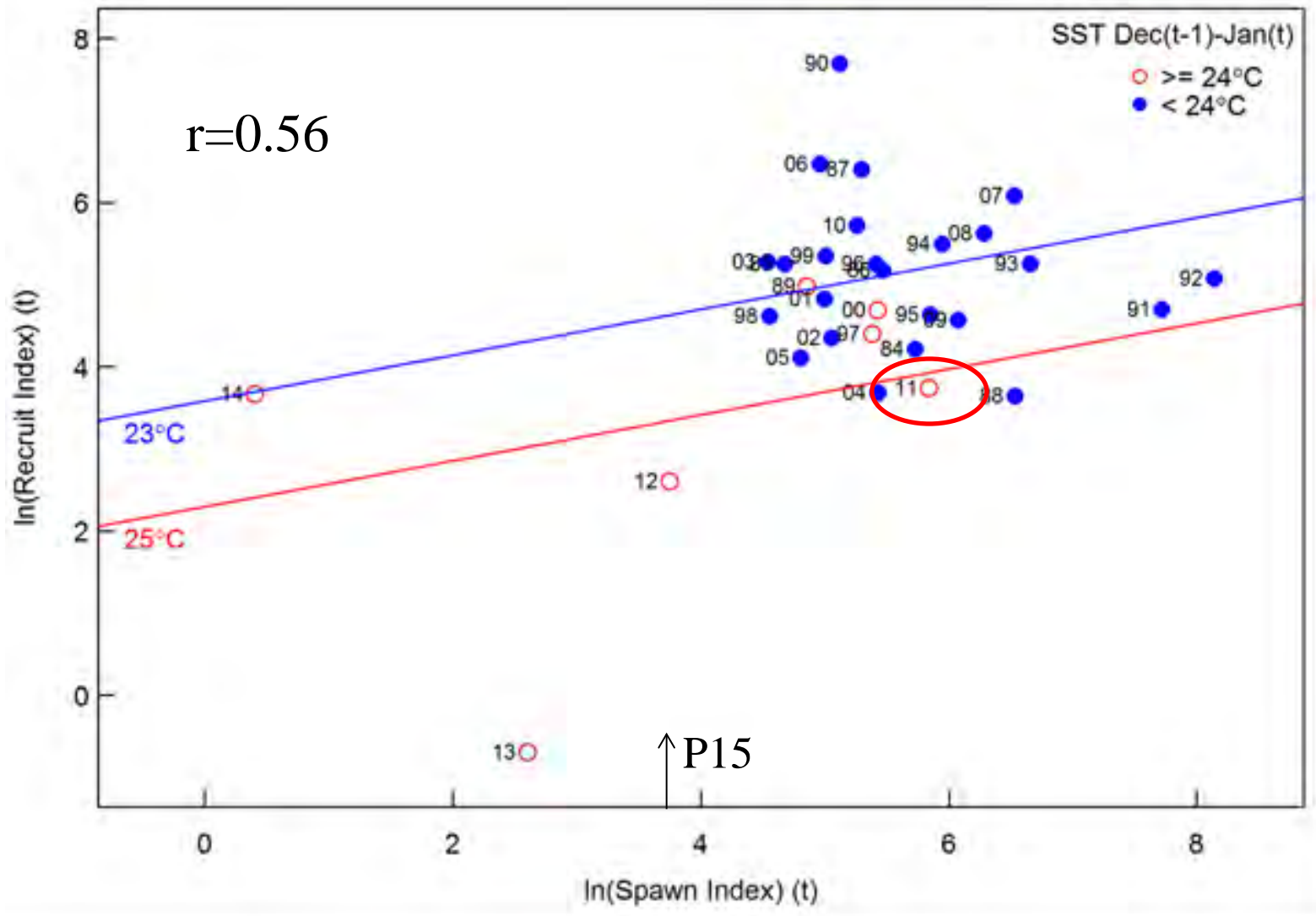


# Shark Bay scallops pre-recruit (0+) v. SST

Counting daily rings - time/environment of good recruitment

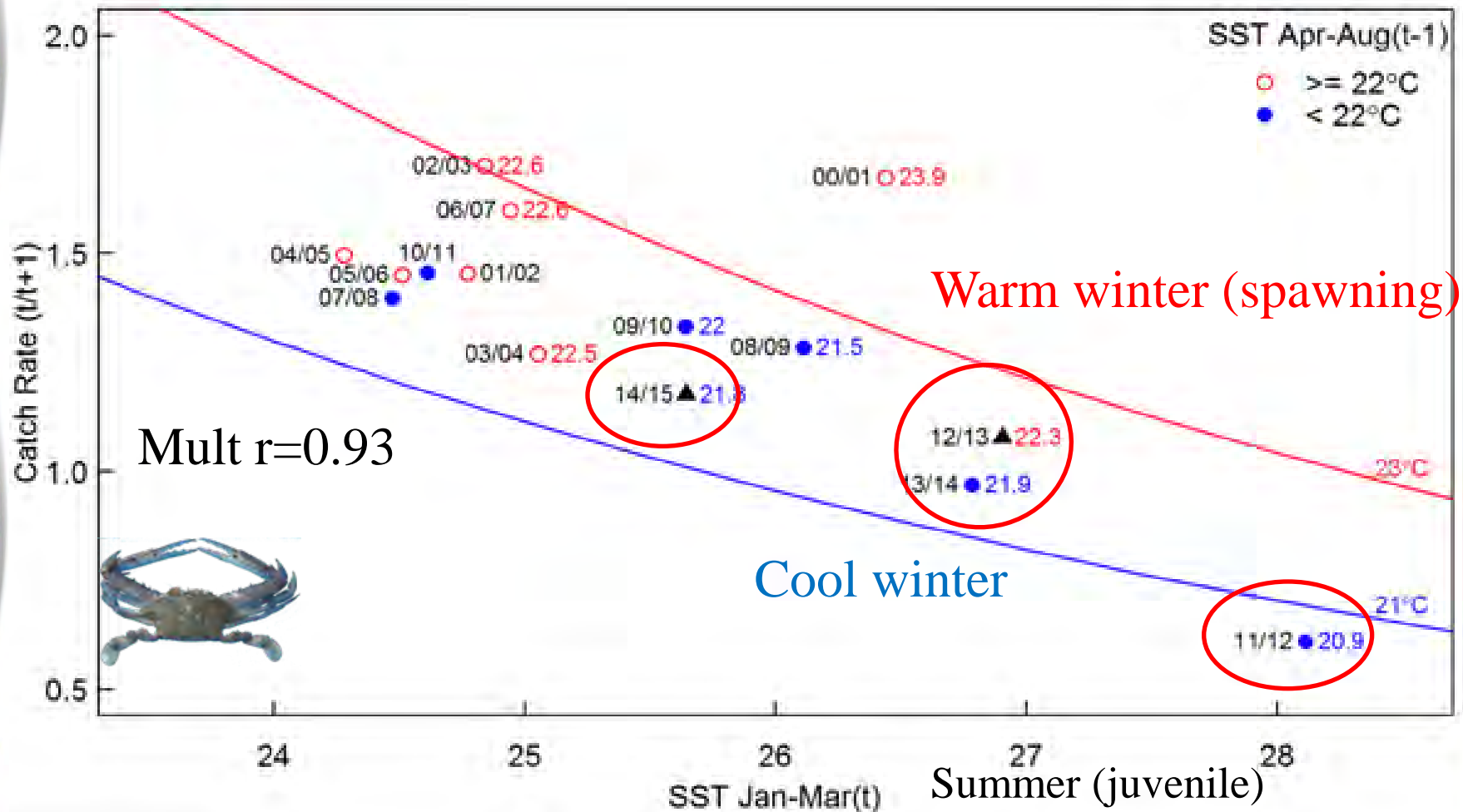


# Scallops Shark Bay: Stock-recruit-environment relationship



# Shark Bay crab recruitment v. SST

- Warm SST summer (juvenile) negative effect
- Cold SST autumn/winter (spawning) negative effect
- **Fishery closed for 2 years**



# Prawn fisheries: Western Australia

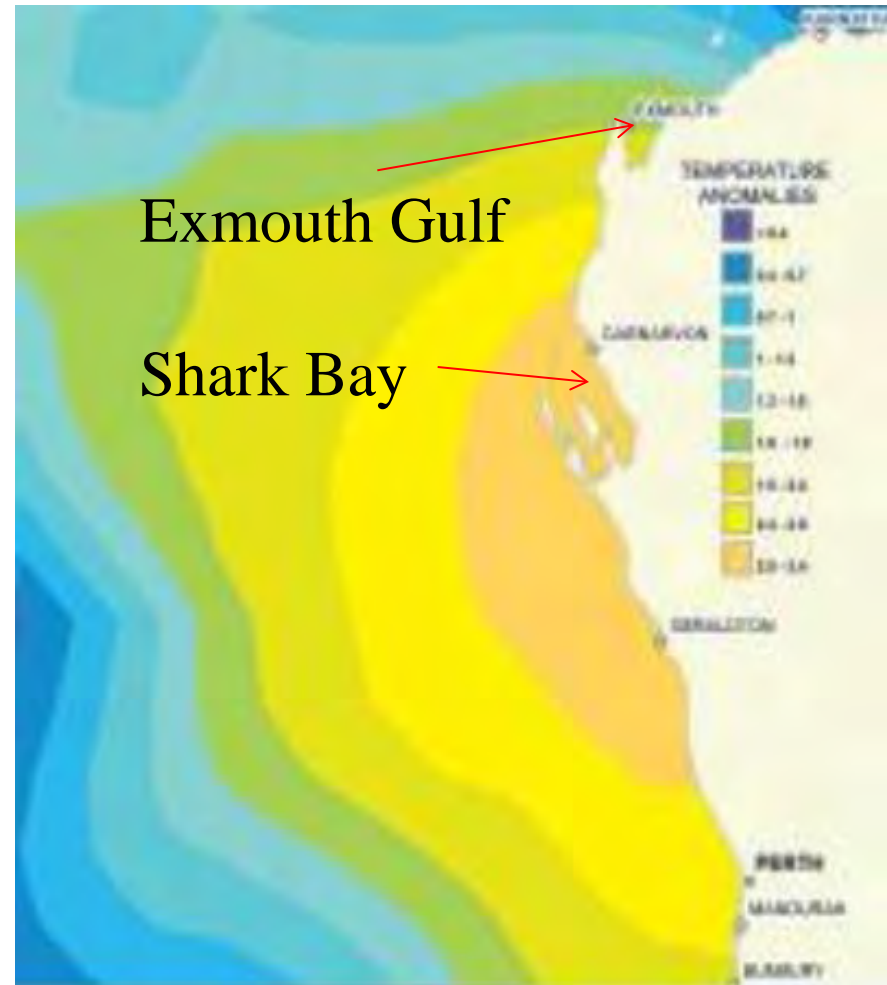


King prawn

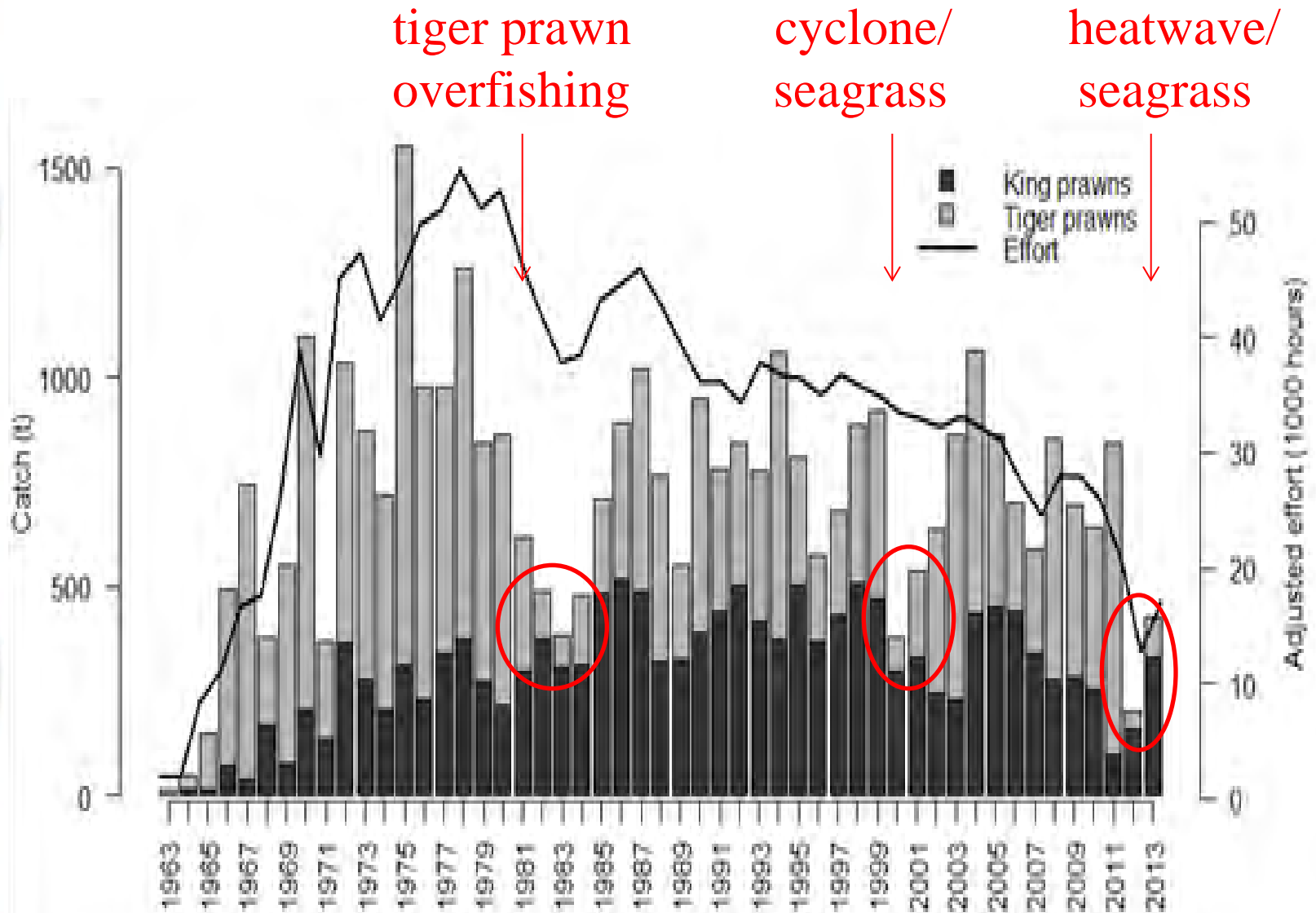


Tiger prawn

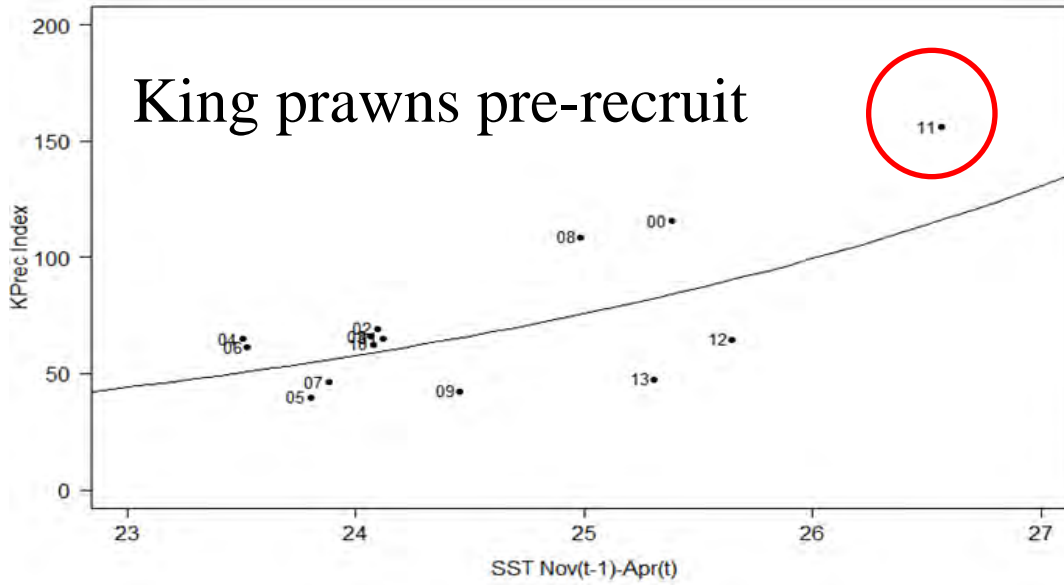
- Exmouth 2°C warmer than Shark Bay
- Pre-recruit surveys



# Exmouth Gulf prawn catch

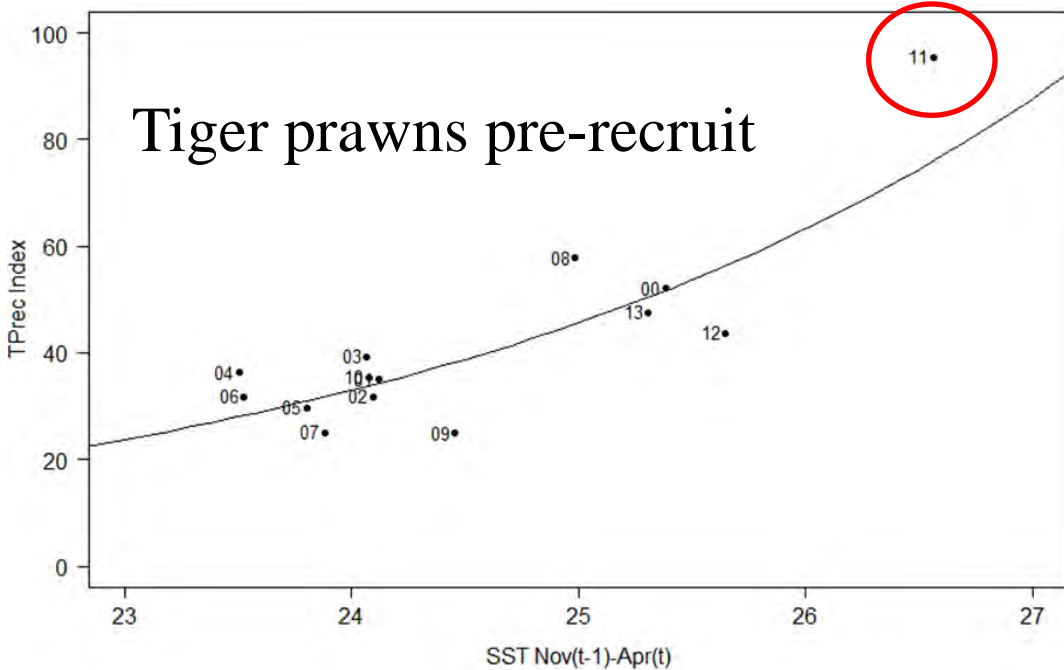


Warm SST negative effect on tiger & king prawns (reduced effort)



Shark Bay

Survey pre-recruit  
v.  
Water temperature





# Research/Management adaptation

- Experience of dealing with extreme event
- Spawning stock protection
- **Early detection important**
  - Monitoring environment to understand cause
  - Monitoring pre-recruits (catch prediction)
  - **Responsive harvest strategy**
- Rebuilding strategies
  - Management: reduced catch/effort, closures
  - Restocking (abalone)

