

PICES 2012 Hiroshima

Effects of natural and anthropogenic stressors in the North Pacific ecosystems: Scientific challenges and possible solutions

Marine ecosystem responses to sporadic perturbation: their processes, social impact and possible solutions

In the case of "fish species alternation" responding to climate change

Hiroaki SAITO, Takaomi KANEKO & Mitsutaku MAKINO

Fisheries Research Agency



Acknowledgements:

This study is a part of SUPRFISH programme
(Studies on Prediction and Application of Fish Species Alternation)
sub-programme of POMAL
(Population Outbreak of Marine Life),
funded by AFFRC, MAFF, Japan (FY 2007-2011).



IMBER-JAPAN programme.

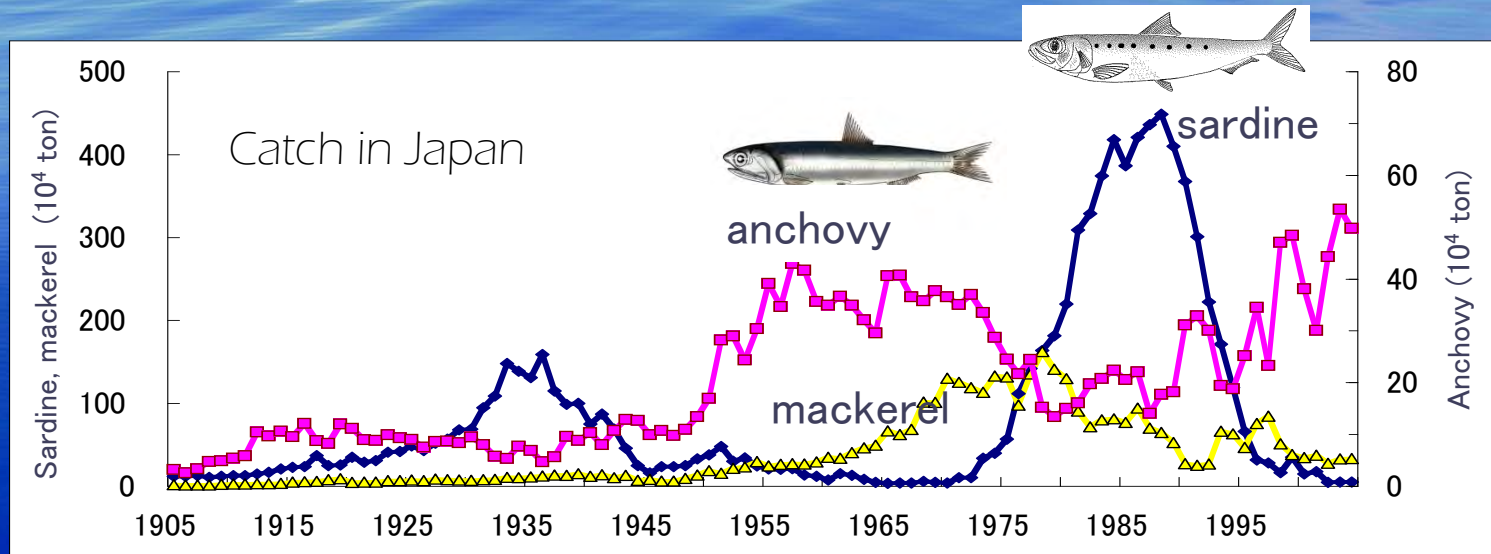


Special thanks to SUPRFISH scientists, esp. for Drs. Nonaka,
Taguchi (JAMSTEC), Yasuda, Nishikawa (U. of Tokyo).

Contents

1. Introduction of FSA
2. Economical impact of FSA
3. Mechanisms of FSA and its forecasting
4. Strategy for maintaining mackerel strong year-class after FSA
5. Modeling fishers investment behavior under different policy options
6. Conclusion

Fish Species Alternation (FSA)



Sardine landing in Japan:

1960s: 10^4 - 10^5 ton

mid 1980s: $>4 \times 10^6$ ton

1988: start declining

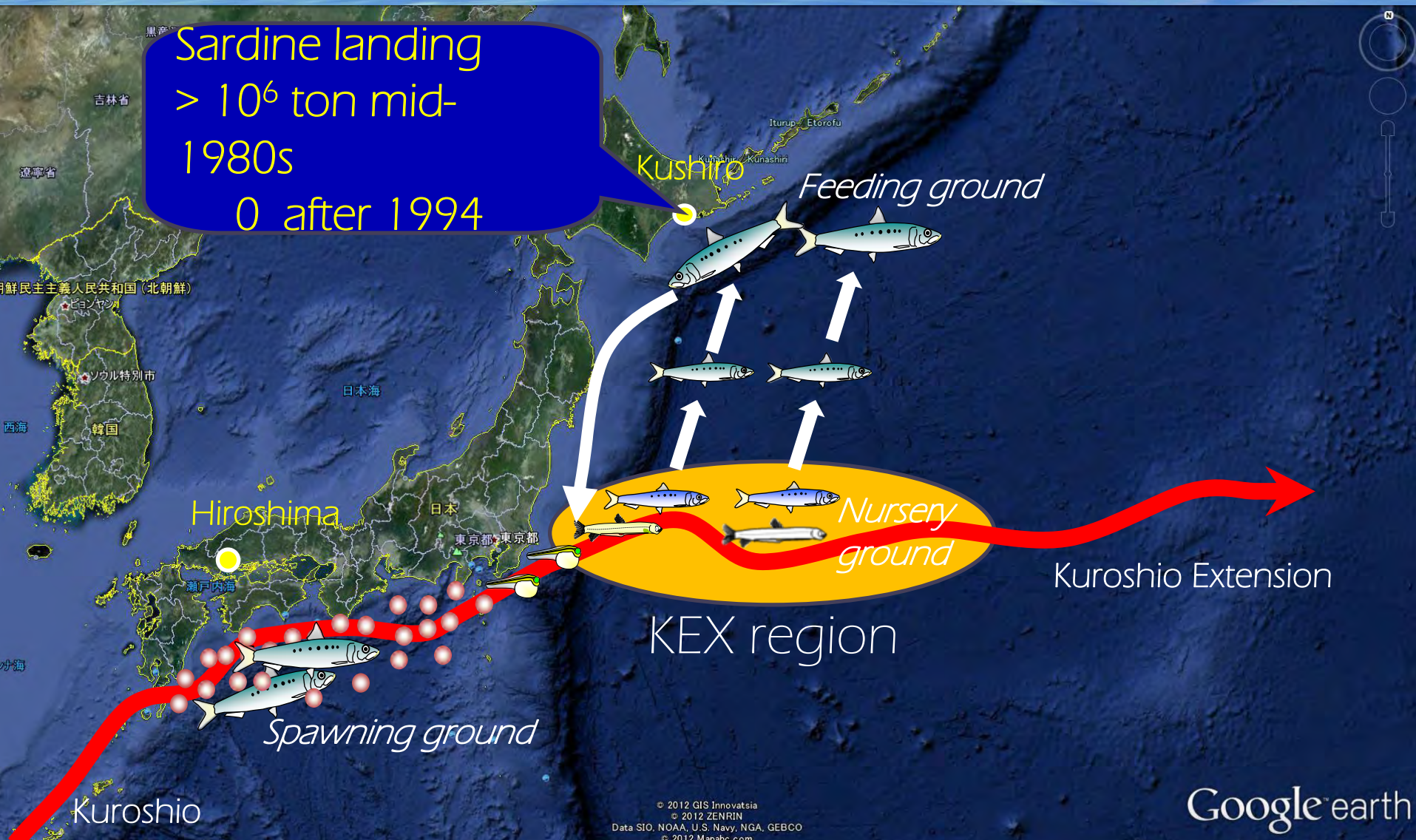
2000- : $\sim 10^5$ ton (<5% of peak landing)

Anchovy landing increased after the sardine stock collapse

Mackerel landing was high at the transition phase of S-A

Alternative increase of dominant fish species

Migration route of Japanese sardine



Impact of the sardine collapse to regional economy in Kushiro for 3-years (1990-92)

Kaneko et al
In review

Department	Economic impacts (10 ⁶ yen)			Employment
	Direct	Indirect	Induced	
Agriculture & Forestry	0	-1	0	0
Fishery	-9	-84	-6	-5
Mining	0	-15	-1	-1
<u>Seafood processing</u>	<u>-6,339</u>	<u>-248</u>	<u>-13</u>	<u>-96</u>
<u>Manufacturing</u>	<u>-1,306</u>	<u>-190</u>	<u>-40</u>	<u>-19</u>
Construction	0	-24	-9	-1
Electricity, gas & water	0	-202	-27	-4
<u>Commerce</u>	<u>-559</u>	<u>-593</u>	<u>-135</u>	<u>-144</u>
Finance & insurance	0	-173	-34	-9
Real estate	0	-101	-173	-1
Transportation & Comm.	-70	-254	-71	-32
Services	0	-396	-264	-27

- 11 billion yen -339 jobs

Impacts of FSA

- 11 billion yen -339 jobs in Kushiro during 1990-92

25 fleets reduction (with subsidy)

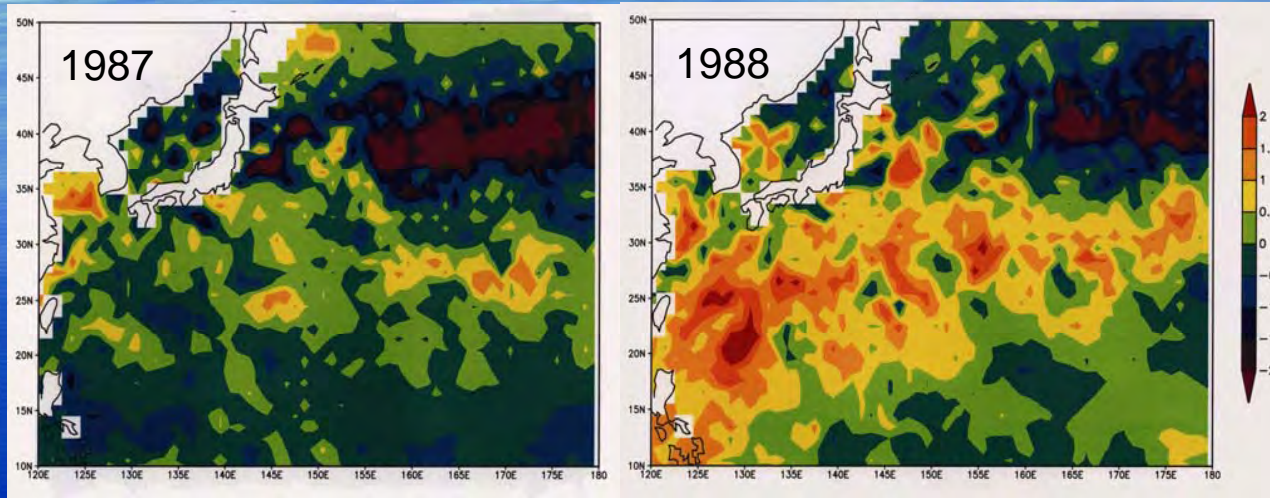
Sudden and unpredictable FSA induced serious economical and social problems

If FSA is possible to forecast, fishers are able to prepare the decrease and take appropriate investment strategy, and the government is easy to push new fisheries management policy to counteract the FSA

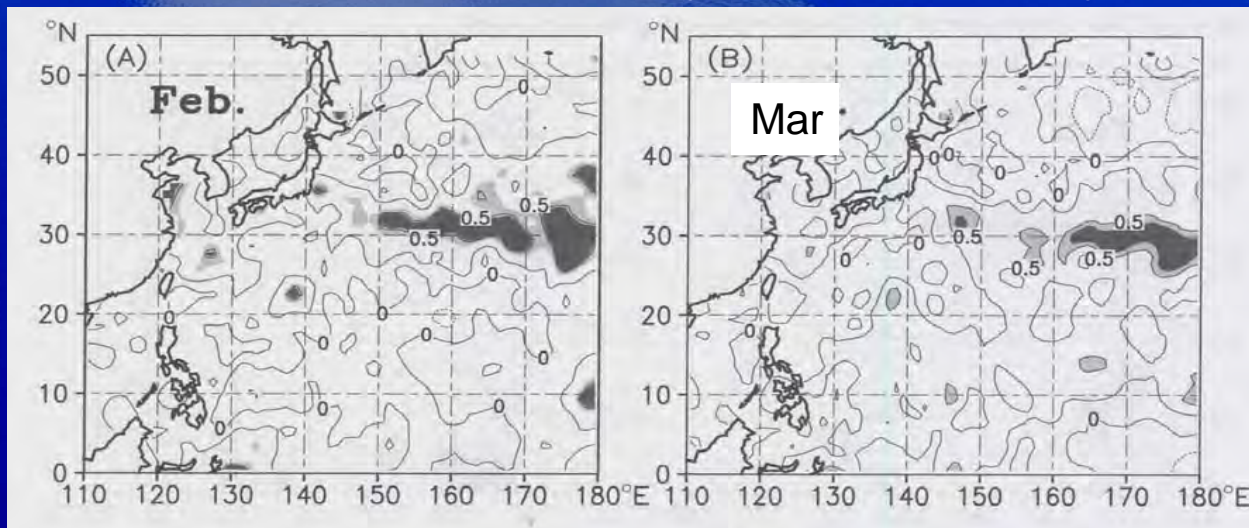
The goal of SUPRFISH programme: Understanding the mechanisms of FSA and the forecasting

What is the trigger of the FSA?

SST anomaly



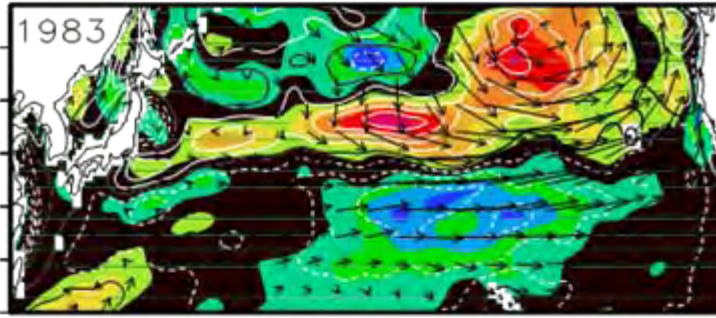
Correlation between SST anomaly and larval mortality rate



We examined the mechanisms of the change in SST in the KEX region.

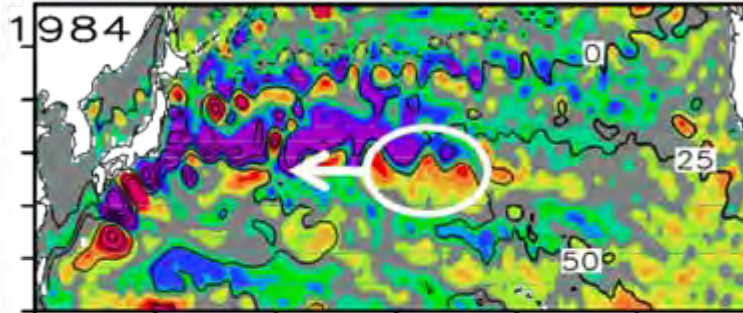
For the retrospective analysis of KEX physical status, we used an eddy resolving GOCM "OFES"

Wind curl change

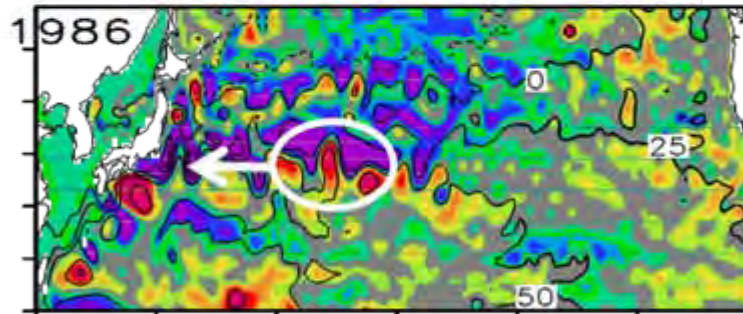


Strengthened easterly wind induced high SSH anomaly in eastern N. Pac.

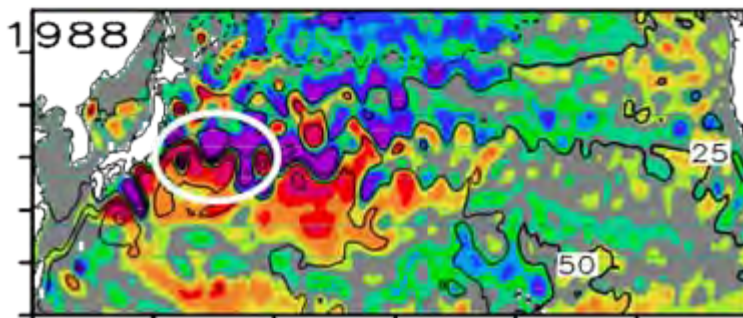
SSH anomaly



SSH anomaly induced Rossby wave and propagated to west.

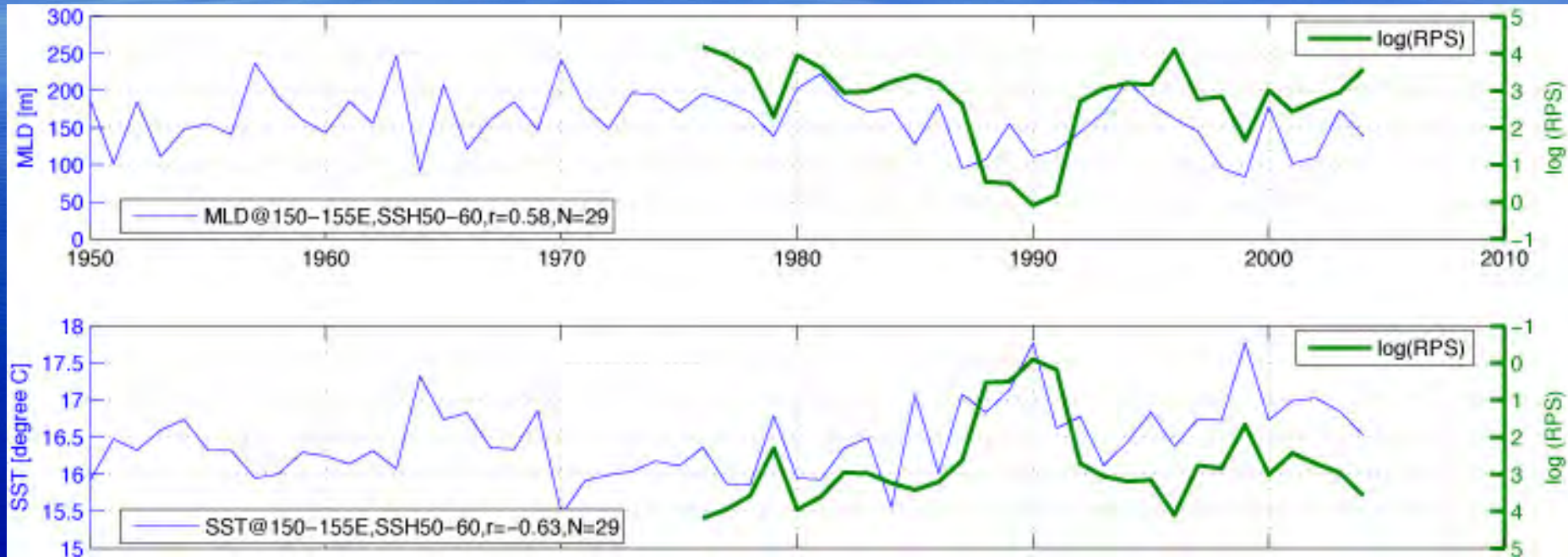


SSH anomaly reached to KEX in 4 years



The arrival in SSH anomaly in KEX region induced KEX acceleration and SST increase

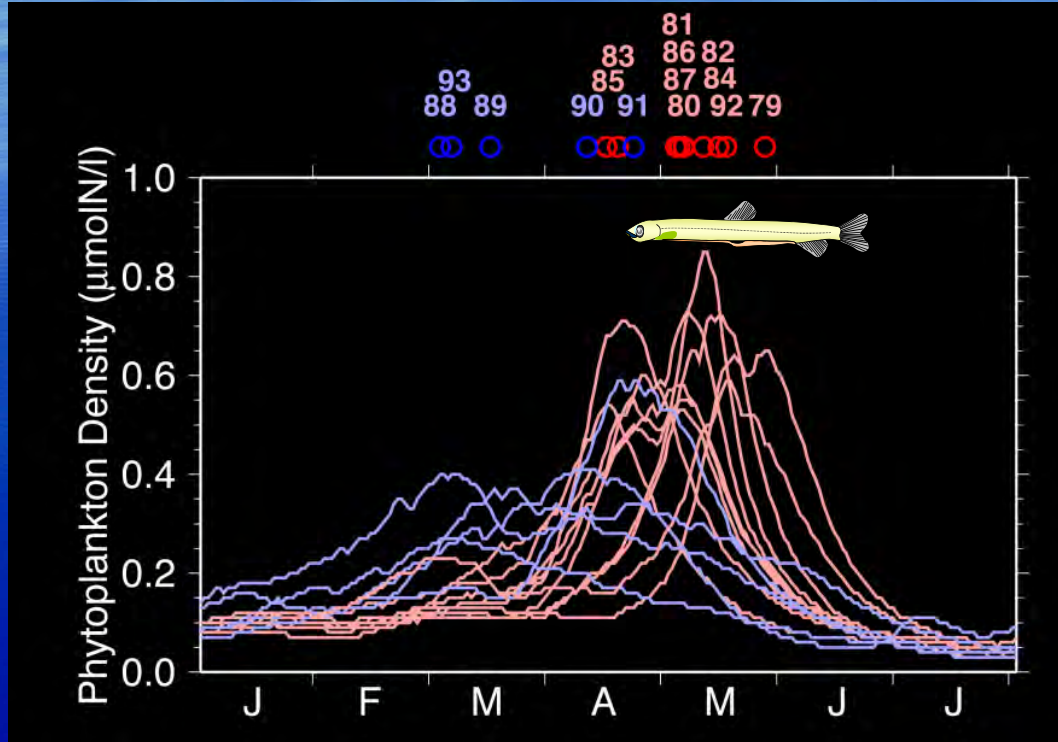
Annual variations in MLD, SST in the KEX (OFES) and RPS Recruitment per spawner



(Nishikawa, Yasuda & Itoh, FO, 2011)

Recruitment failure in the years of shallow MLD and high SST

Seasonal change in phytopl. (model)



1988-91, 93 (blue):
years of $\text{MLD} < 170\text{m}$

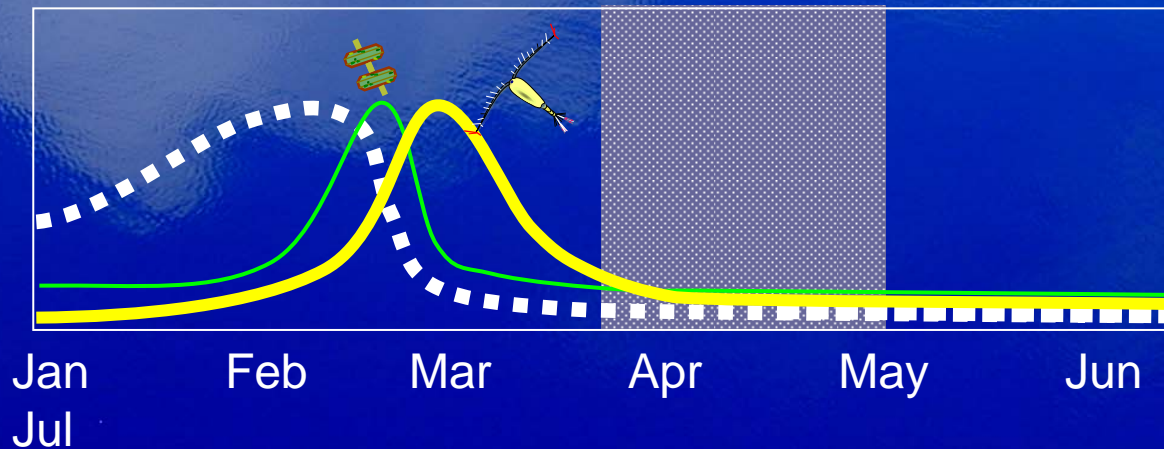
Spring bloom in shallow MLD years (1988-1991, 93):
Early initiation, low magnitude, early termination (except for 1991)

In the years of shallow MLD:

- Low growth rate due to low food conc.
- Resultant increase in mortality

The "Mismatch" was induced by the change in wind curl anomaly in the eastern N. Pacific

Years of shallow MLD



Wind off Hawaii influence the recruitment of Japanese sardine



Time (years)

Climate change

Climate obs. system/satellite

0

SSH anomaly

Satellite/RV

0-1

Propagation

// + Model

SST/WML in KEX

// + Model

Ecosystem change

RV + Model

~4

Decline in larval growth Egg/larvae survey

4+

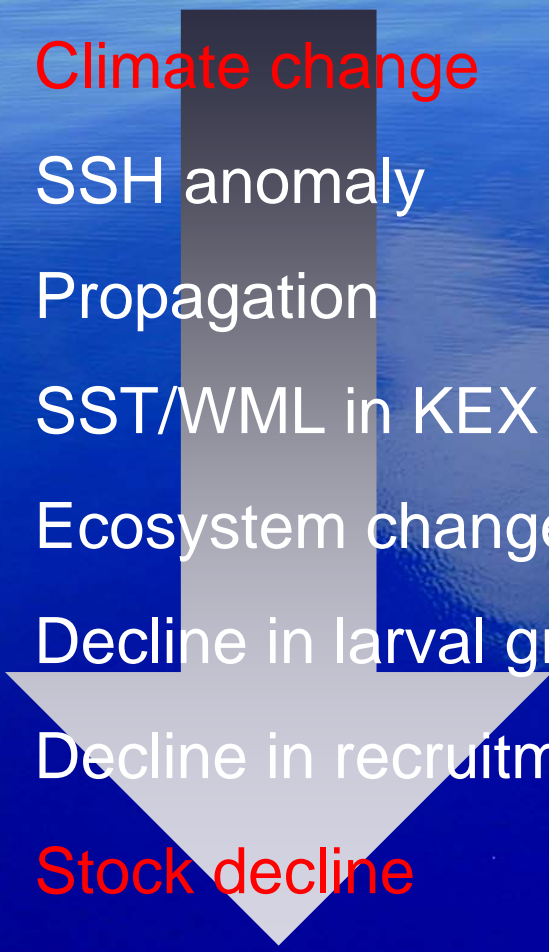
Decline in recruitment Pre-fishing season survey

4+

Stock decline

Resource assessment survey

5-7



Crisis of purse seiners

- Purse seiner: National government regulates the total number of net by license (5 years)
- 72 fleets in 1987, 24 in 2010.
- Annual yield: 66 billion JPY in 1983, 26 billion in 2009

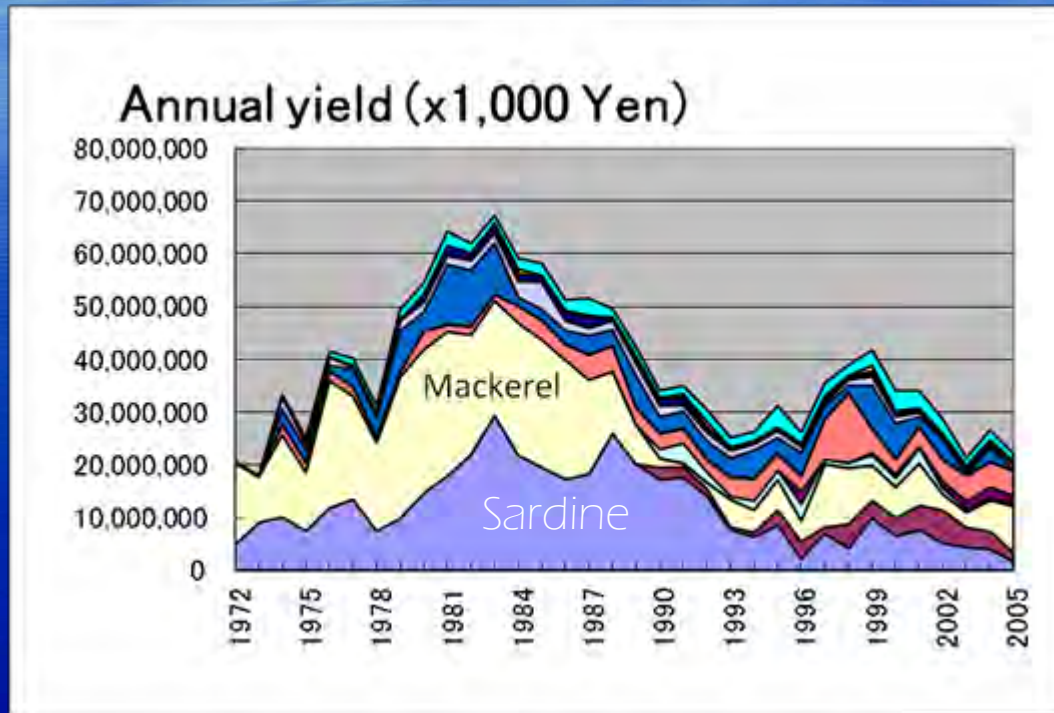


Net vessel: 135t



2xTransporter (330t class)

Purse seiner annual yield



Landing peak in 1986

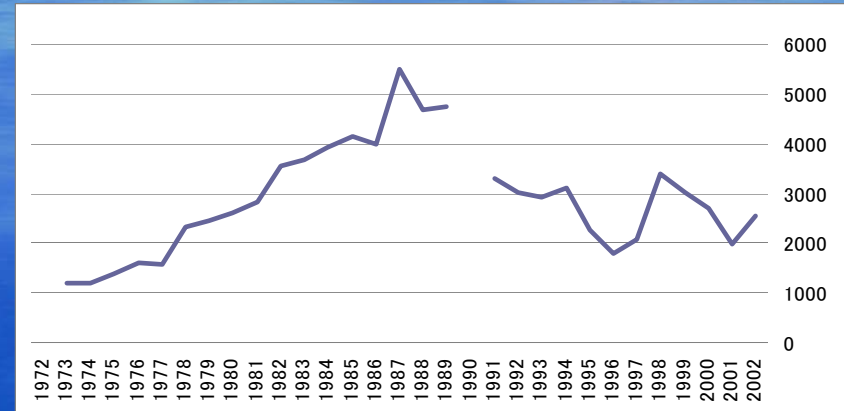
Yield peak in 1983 due to decreasing price

Annual yield in 1987 decreased by 30% from 1983 (prior to FSA)

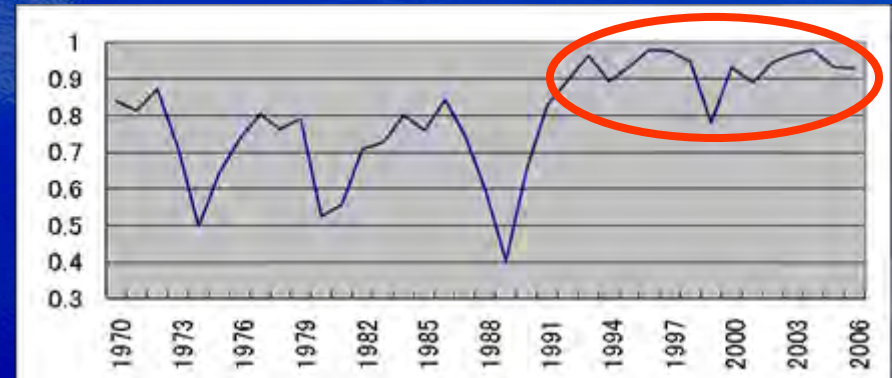
Building 62 transporters during 1987-1991 to increase landing (replaced to bigger vessels to increase yield by amount)

After the sardine stock collapse.....

- Overcapitalization
- Fishers targeted on mackerel after 1990.
- Strong mackerel year classes of '92, '96 were intensely harvested before maturation and the strong year classes did not improve the stock level.



Running index per transporter



Relative composition of immature mackerel (0-2 years)

Retrospective model analysis of fisheries management: For stable housekeeping of purse seiner after FSA

Tested strategies for support mackerel stock recovery:

1. Regulation of vessel building by government

2. Reduction of fishing pressure to mackerel stock

(Not fishing ban, break-even for fishers, i.e. no benefit no deficit. Purse seiners are able to continue their business to wait the recovery of resources)

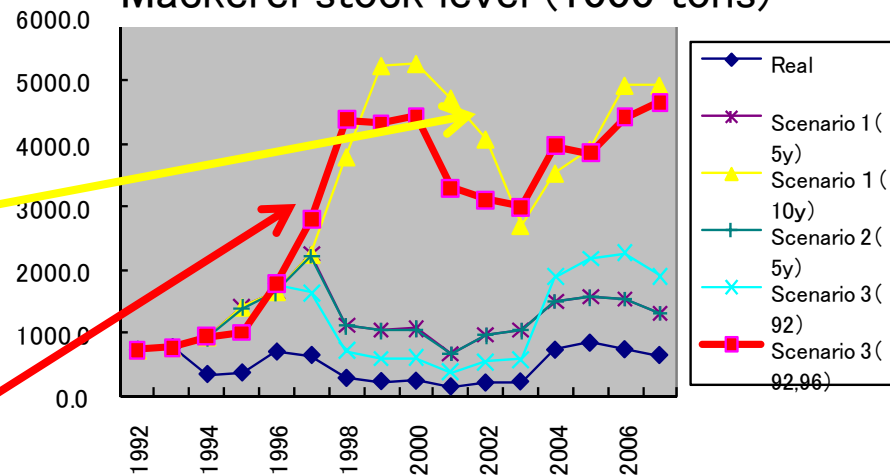
Best solution

- Four scenarios with reducing fleet number (cost) by 10 % in 1982 &
- 1) 5-years ban
 - 2) 10-years ban
 - 3) Reduction of fishing pressure on '92-year class for 2-years
 - 4) Reduction of FP on '92 and '96 year classes

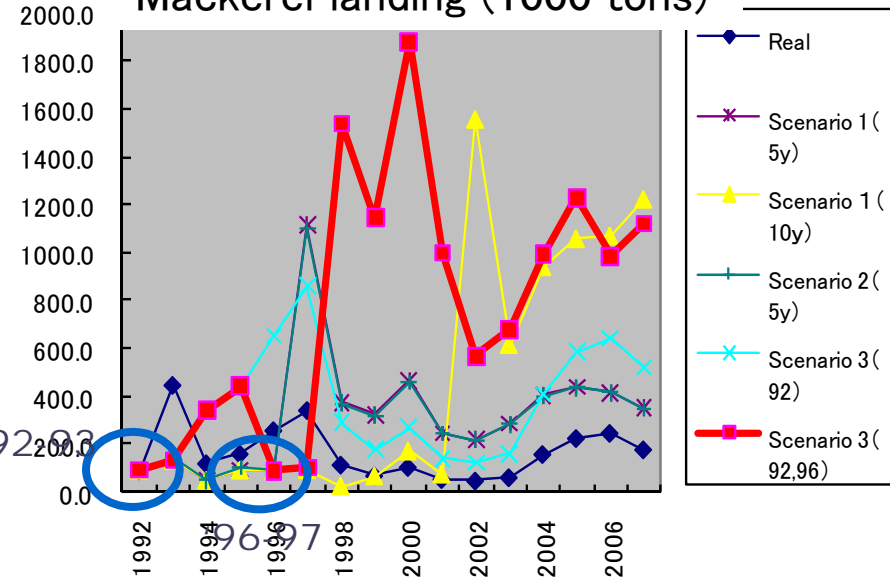
4) is best scenario with decreasing fleet number by 10 %

This strategy is equivalent to 10-years ban of fishing pressure

Mackerel stock level (1000 tons)



Mackerel landing (1000 tons)



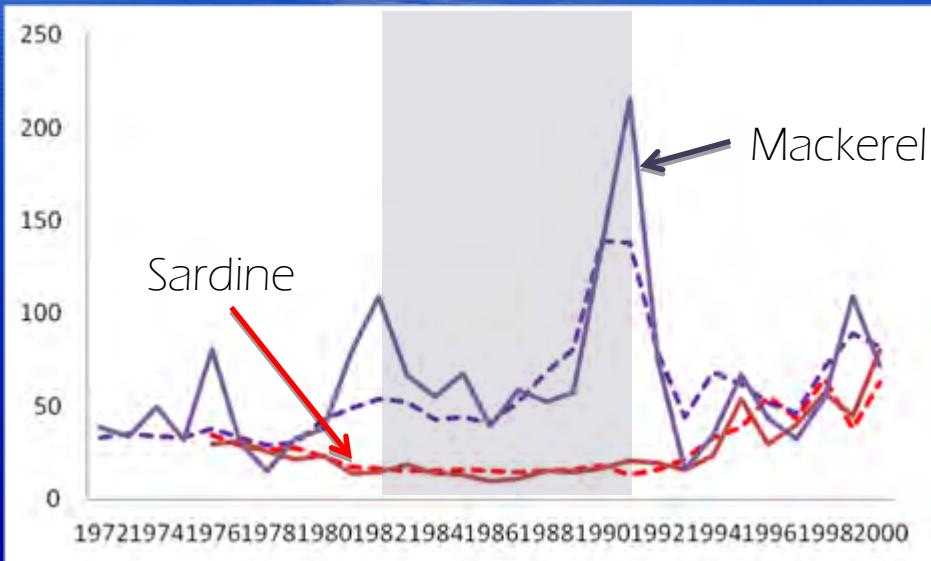
How to regulate ship building (10% decrease) during 1982-1991?

Modeling fishers investment (ship building) behavior under 4 optional conditions

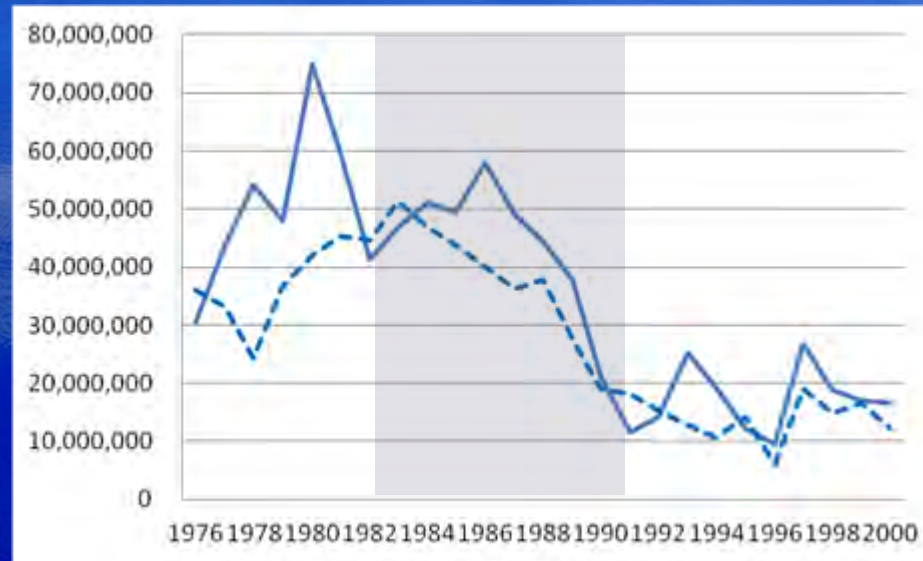
- 1) Free investment, subsidy for the vessel reduction (as usual)
- 2) Governmental regulation of ship building
- 3) Specific duty to landing
- 4) Expecting self-capital control mechanism inducing ITQ (Individual Transferable Quota)

Simulating the investment behaviors during 2-license duration (1982-1986, 1987-1991) and evaluate the 4 options of fishery regulation policy (solid lines: real, dashed lines: model)

Mackerel and sardine price (JPY per kg)



Gross annual income from sardine and mackerel (10^6 JPY)



Option 1: Free investment, subsidy for the vessel reduction after FSA

Effective.

In fact, 25 fleets were reduced with subsidy in 1992. But, it was not enough for the target.

Need more capital from public.....

Benefit: Increased stock is available for use. No negative impact on regional economy.

Option 2: Governmental regulation of ship building

Effective if the regulation start before 1984.....
unrealistic? (because of SSH anomaly propagation can be cancelled by regional climate event)

Advantage: No subsidy need

Disadvantage: Negative impact of regional economy
(-46.2 billion yen in Kanto region)

Option 3: Specific duty to landing

Effective if taxing 6-7 yen kg⁻¹.

It is unrealistic considering the price of sardine (ca 15 yen kg⁻¹) and mackerel (ca 80 yen kg⁻¹)

If taxing 2 yen kg⁻¹, the tax income will be 35 billion yen.

Using the income, it is possible to grant a subsidy for reducing fleets (2.36 billion yen per fleets).

Tax + subsidy option is available way for the target

Advantage: Subsidy is prepared from industry

Disadvantage: Negative impact of regional economy (-60.6 billion yen in Kanto region)

Option 4: Expecting self-capital control mechanism of ITO

Expecting to accelerate self-capital control mechanism by trading ITO between fleets.
Estimated ITO prices is 0.35 billionYen per fleets which is too small to induce voluntary reduction.

ITO alone is not enough to reach the target of 10 % decrease in fleets

Disadvantage: Negative impact of regional economy (-61.0 billion yen in Kanto region)

Strategy for FSA

Pre-suppression of fleet size in advance of FSA and post-reduction of fishing effort to the emergence of strong year class

For pre-suppression:

Application of FSA forecasting technique

For post-reduction to strong year class:

Accurate assessment of recruitment status and stock size of each year class (monitoring efforts)

For the application of new fisheries management policy for small pelagic fishes with FSA

Social issue: Social consensus building for how to use the resources (tax, subsidy, impact of policy to regional and national economy)

Scientific issue: Increasing reliability on the predictability of FSA

For the best use of small pelagic fishes with FSA (natural forcing induced, uncontrollable), it is essential to apply new fisheries management policy based on the societal consensus on the managing policy and the scientific reliability.



Thank you!