

Collaborating with the commercial fishing industry:

An intensive, cost-effective method to
improve red king crab stock assessment

Chris Siddon, ADF&G





Outline

1) Background

RKC in Southeast Alaska

2) Biomass Estimate Comparison

CSA, Mark/Recapture

(St. James, Pybus)

3) Cost Effectiveness of Collaboration

ALASKA
And Surroundings



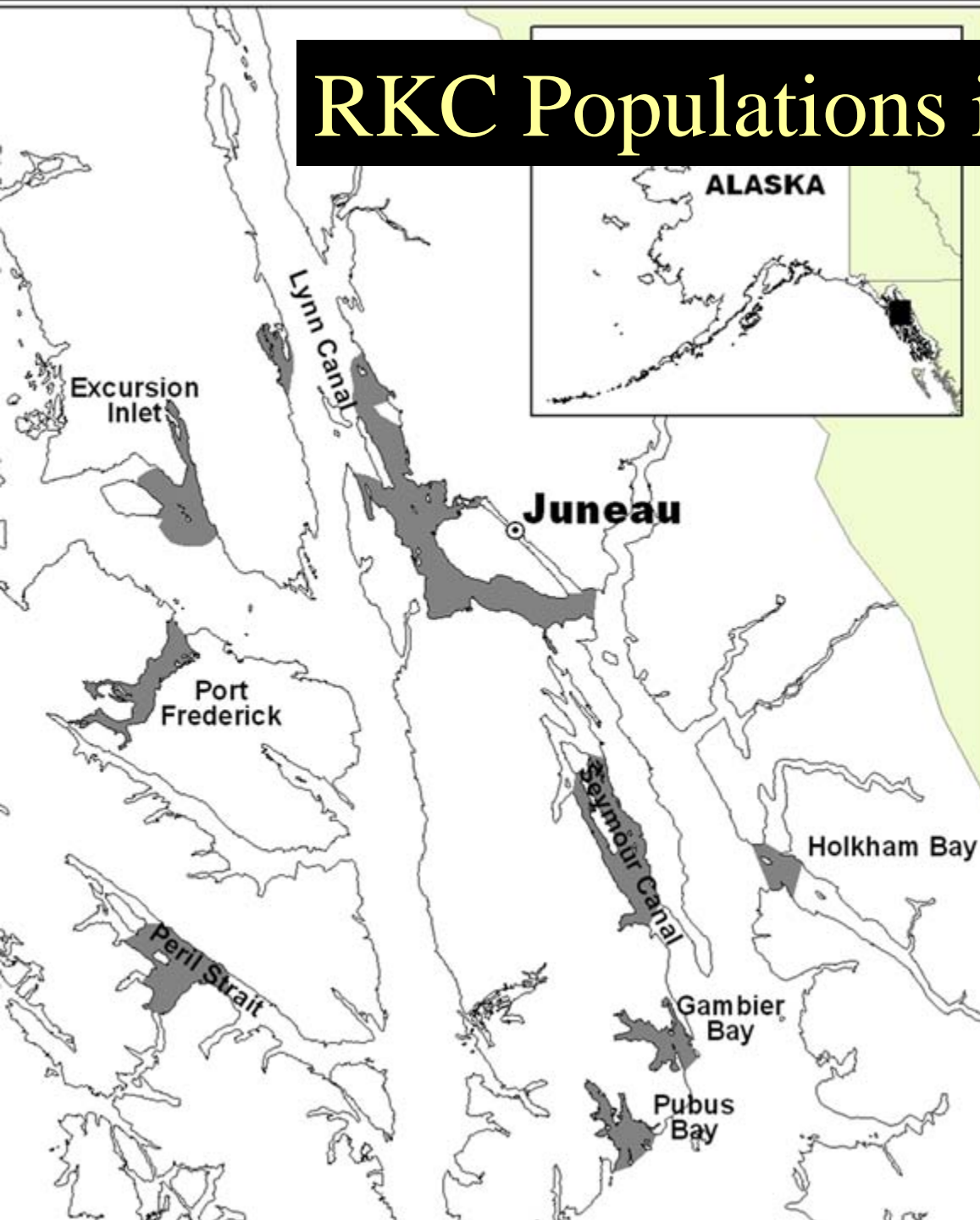


ALASKA
And Surroundings



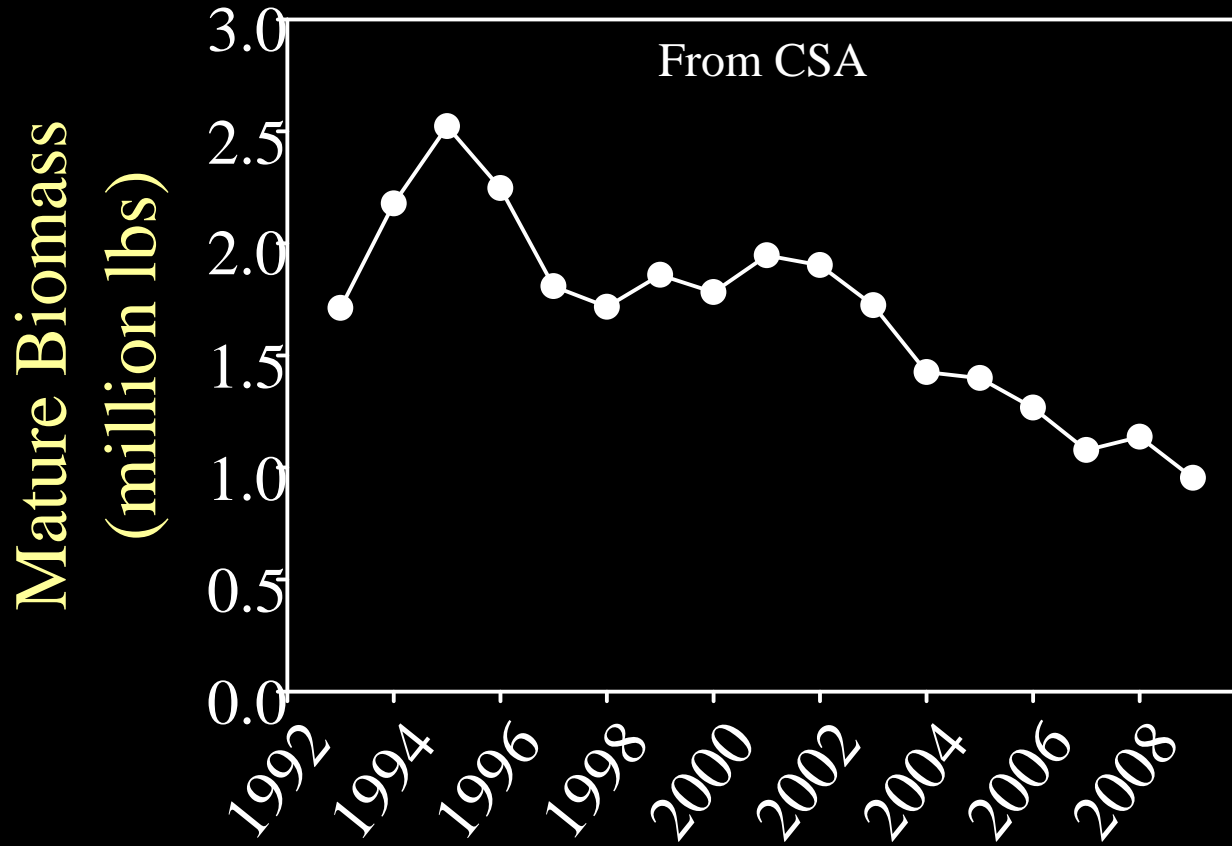
N O R T H P A C I F I C O C E A N

RKC Populations in SEAK

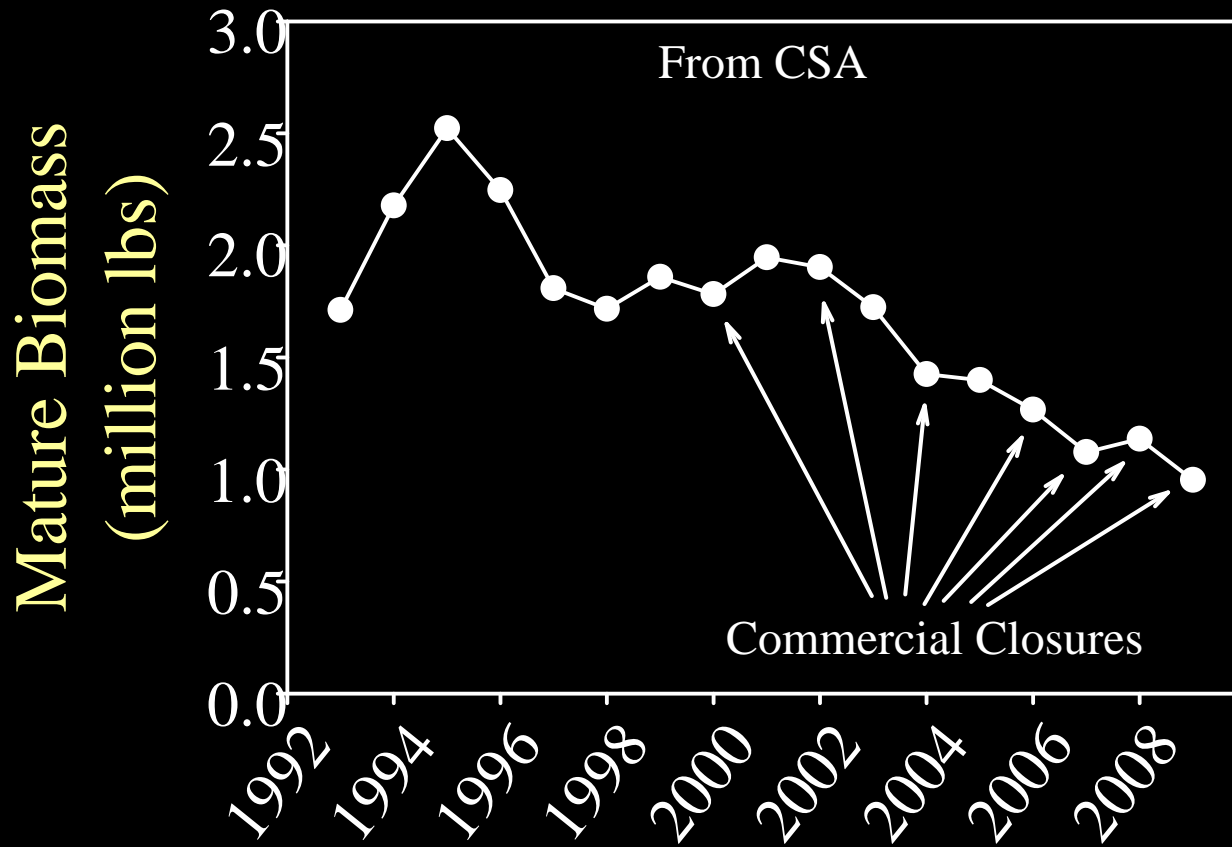


9 Surveyed Areas
70% of comm. catch
Fjord system
Small populations

RKC Regional Mature Biomass Estimates

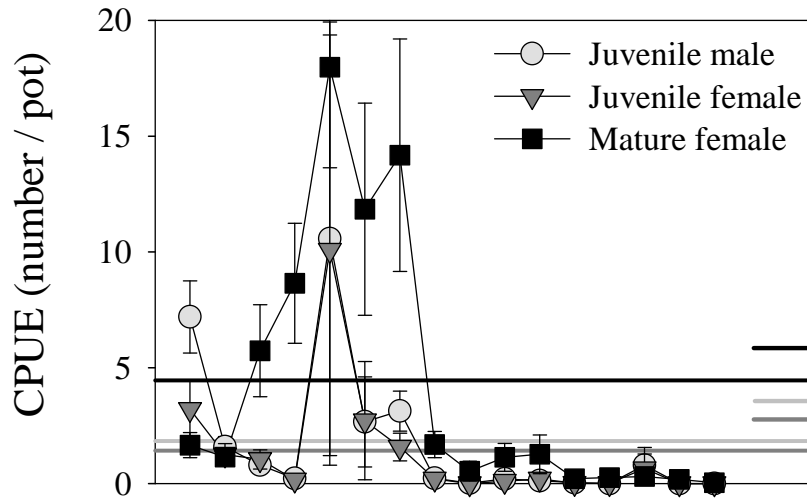
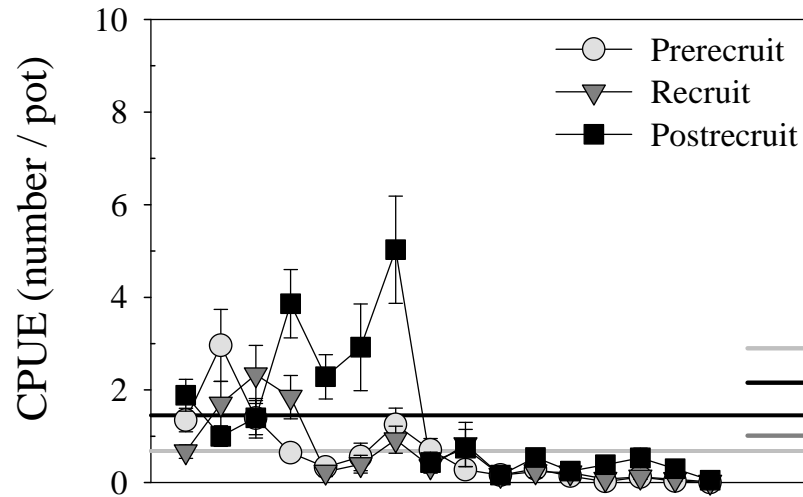


RKC Regional Mature Biomass Estimates



No response to closures,
But observations of crab from other fisheries (Tanner)

Seymour Canal

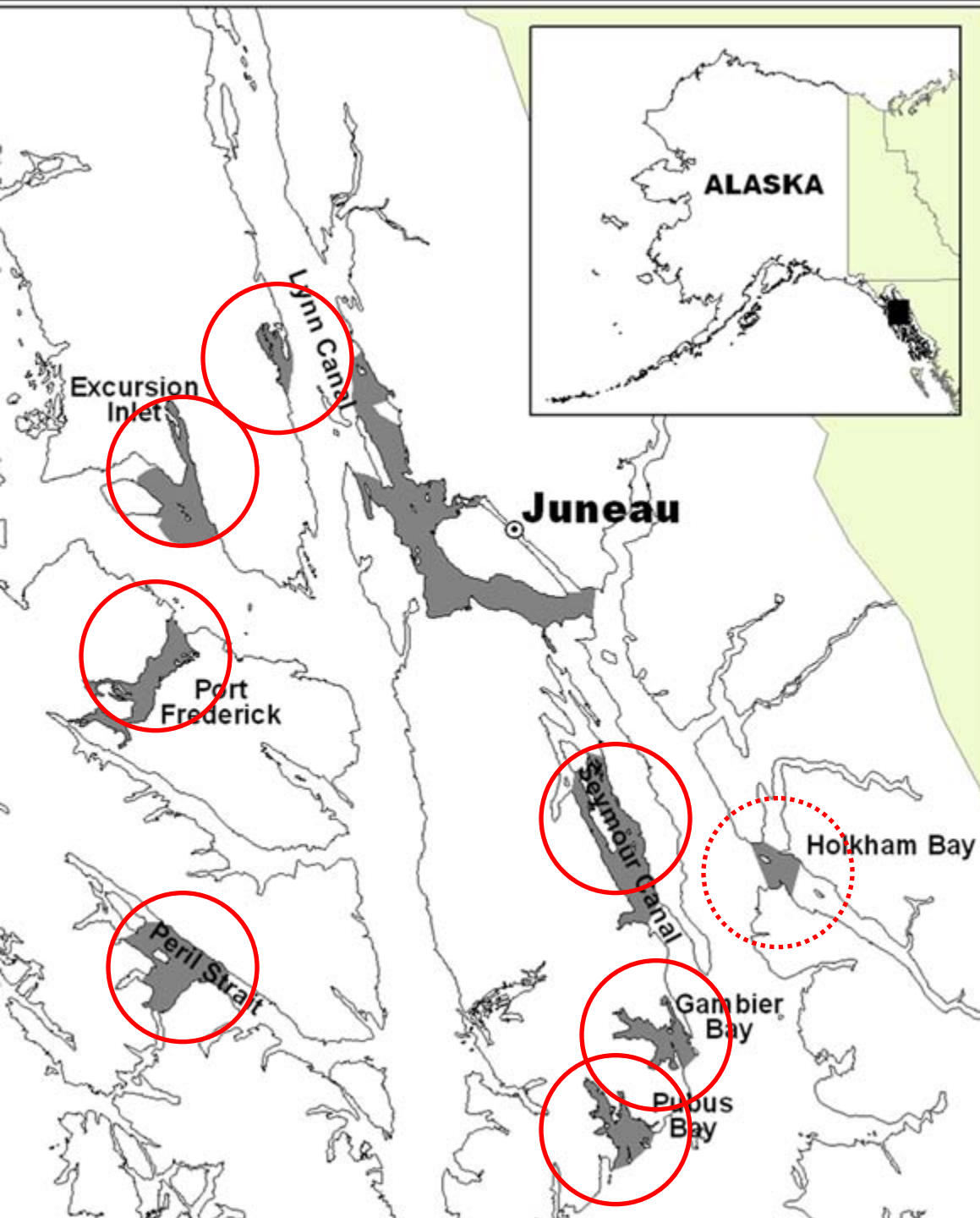


Population decline?
Migration?
What's the cause?

Main Question

Can we groundtruth RKC Biomass estimates?
(How do 2 estimates compare?)

Scientifically sound and fleet support



Approach

2 Estimates
8/9 areas

7 completed
1 to do

Commercial
Vessels

Outline

1) Background

RKC in Southeast Alaska

2) Biomass Estimate Comparison

CSA, Mark/Recapture

(St. James, Pybus)

3) Cost Effectiveness of Collaboration

Catch-Survey Analysis

Commercial Catch + Survey CPUE \Rightarrow q

Abundance = CPUE / q

Assumptions:

CPUE proportional to Abundance

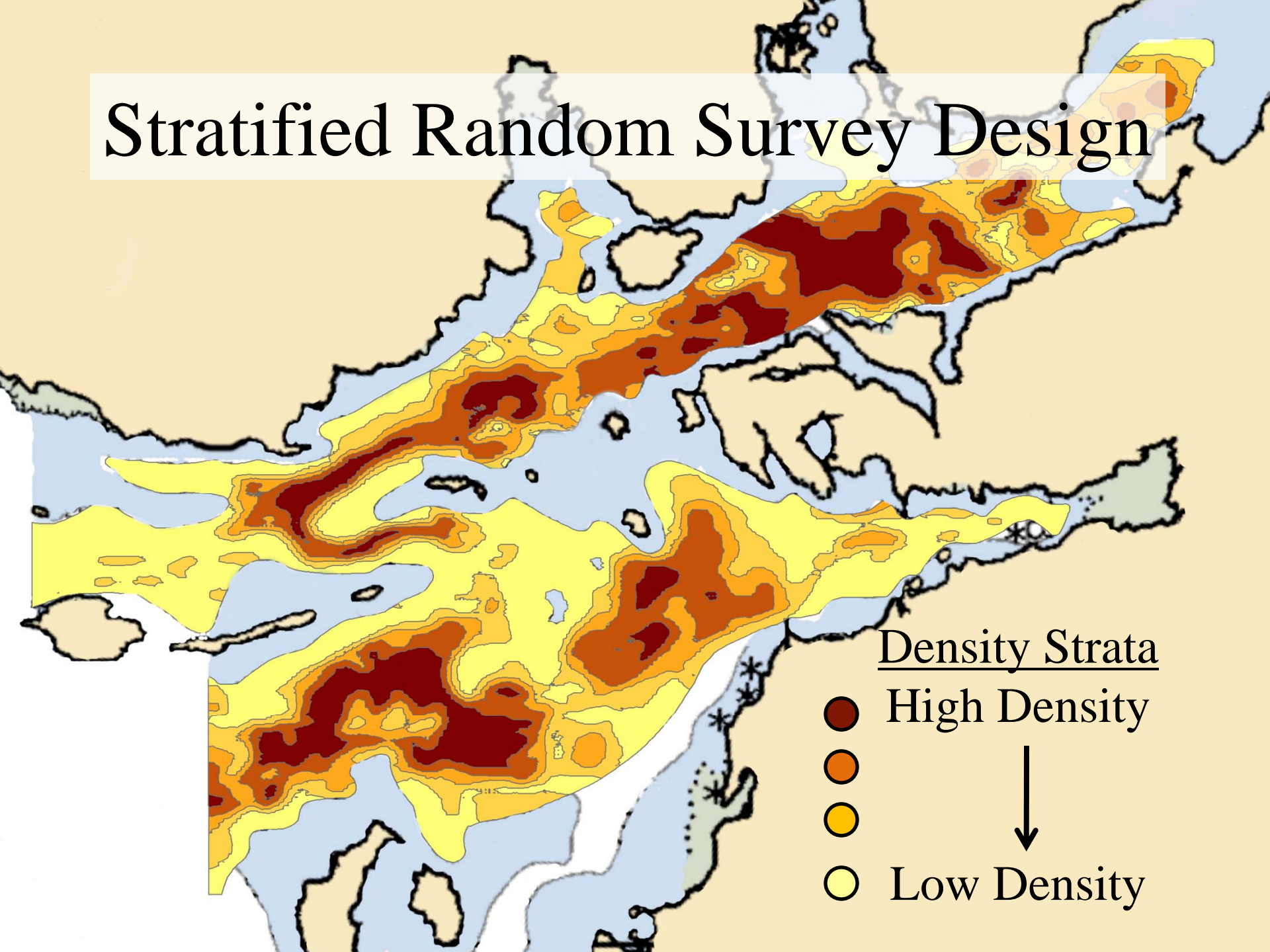
Natural mortality is known

Catchability (q) is equal for all mature crab

No migration

All crab have same probability of being caught
(random sampling)

Stratified Random Survey Design



Mark/Recapture

A fisherman wearing a dark, hooded jacket and orange gloves is working on a tray filled with crabs. The fisherman is focused on a single crab, possibly marking it. In the background, there are several large coils of rope in various colors (grey, yellow, green) and a black plastic bag. The scene is set on a boat or a similar outdoor workspace.

Peterson Estimate

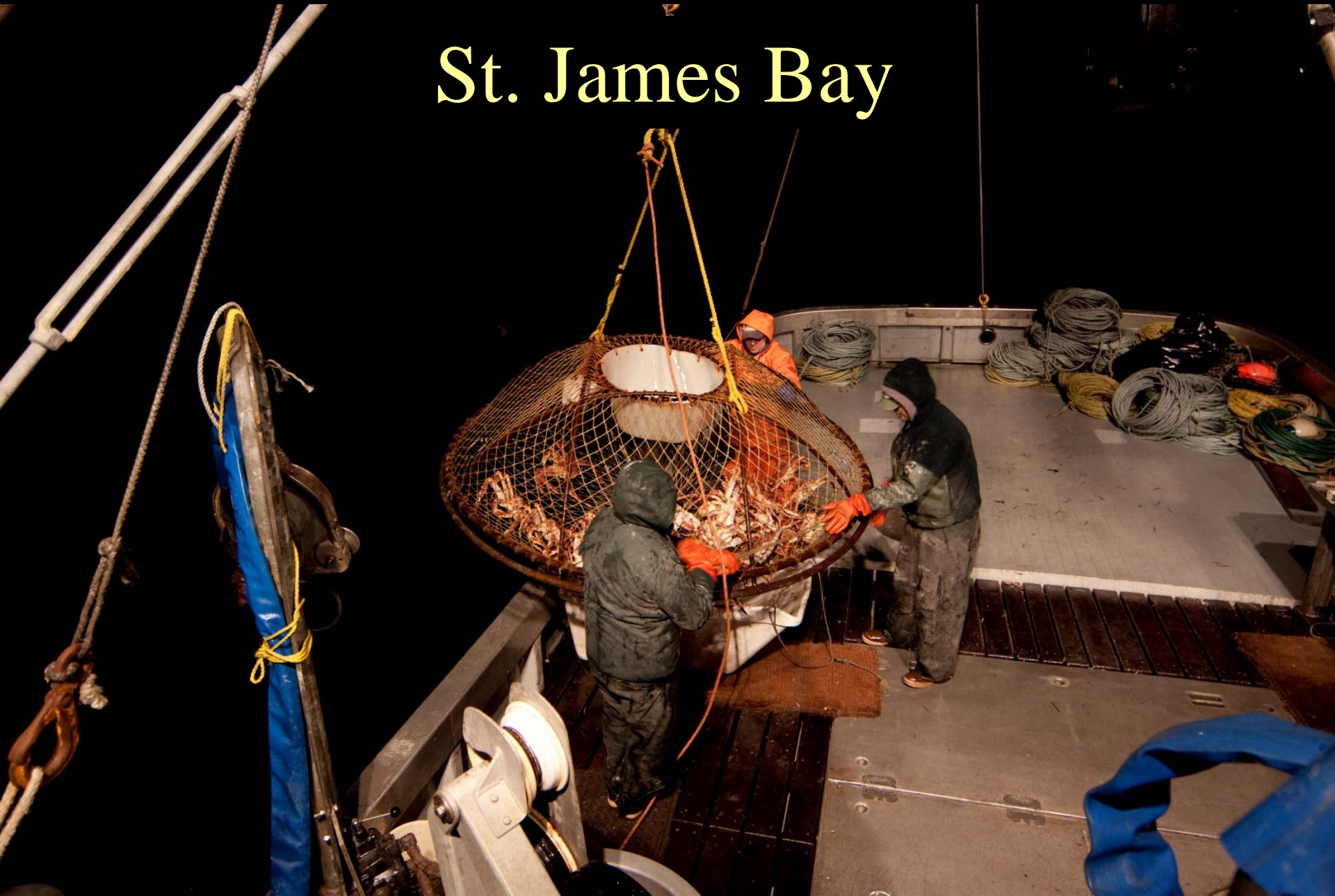
$$(n_1 n_2) / m_2$$

Recapture 30-60 days later (Fall)

No tag loss (double tags)

No evidence of molting (shell condition)

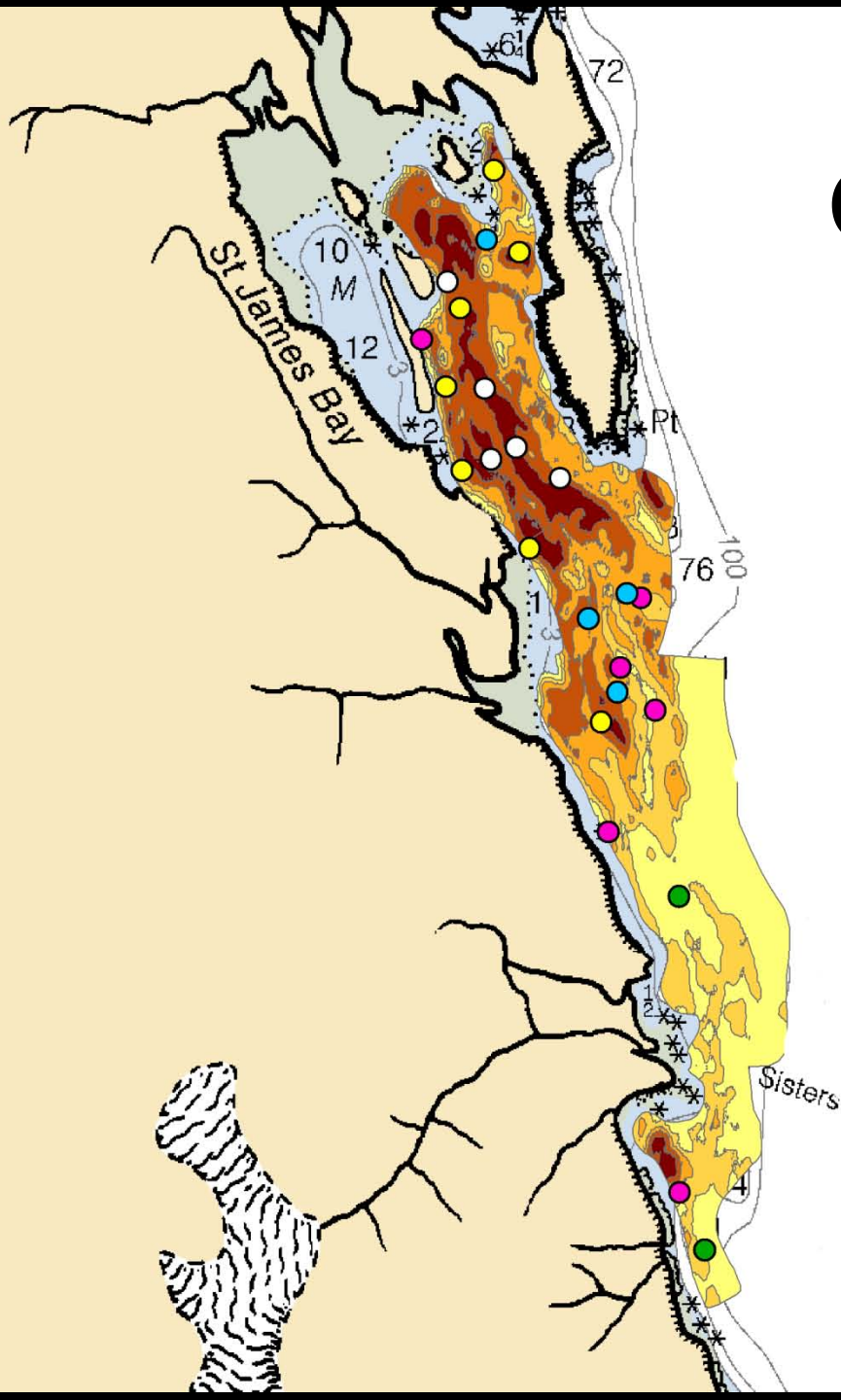
St. James Bay

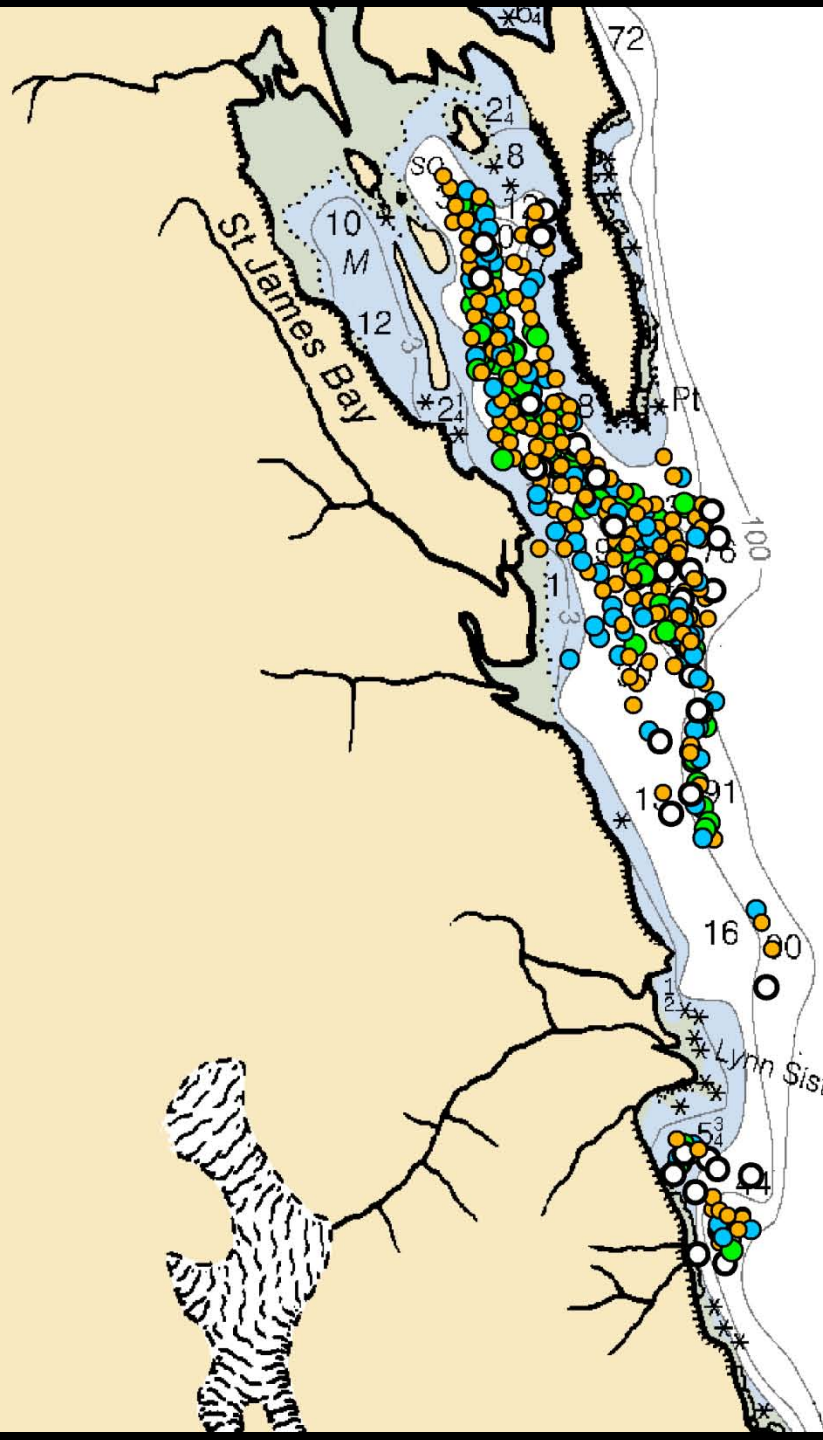


Catch-Survey

24 pot lifts
+ all historic data

N = 5,300 legal crab





Mark

Legal Crab / Pot

- >10
- 6 – 10
- 1 – 5
- 0

Caught and marked: 2,424

~ 20,000 lbs

362 total potlifts

(150 in 2003 fishery)

Recapture

Legal Crab / Pot

● >10

● 6 – 10

● 1 – 5

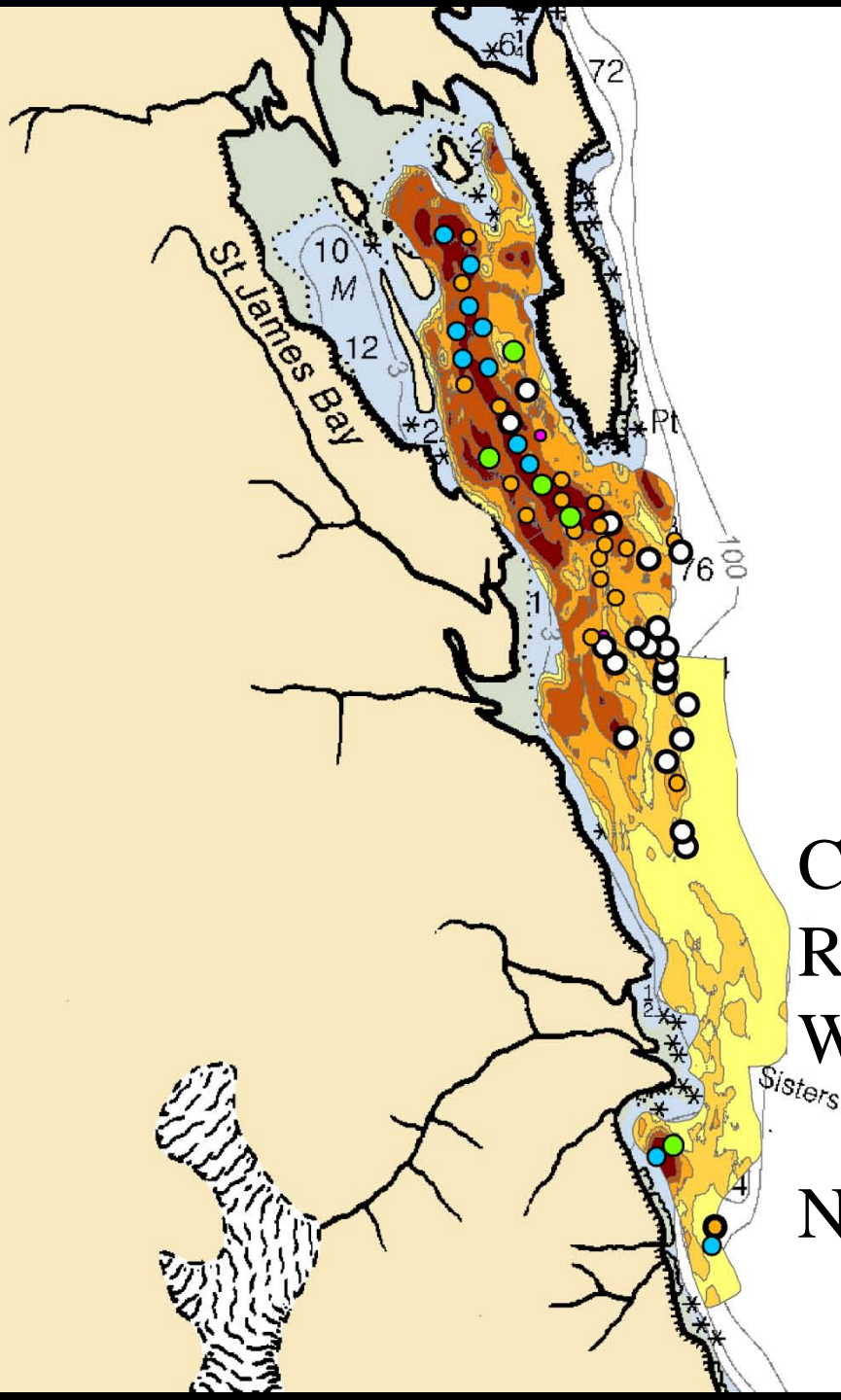
○ 0

Caught and marked: 2,424

Recaptured: 209

With tags: 59 (29%)

N = 8,340



Recapture

Legal Crab / Pot

● >10

● 6 – 10

● 1 – 5

○ 0

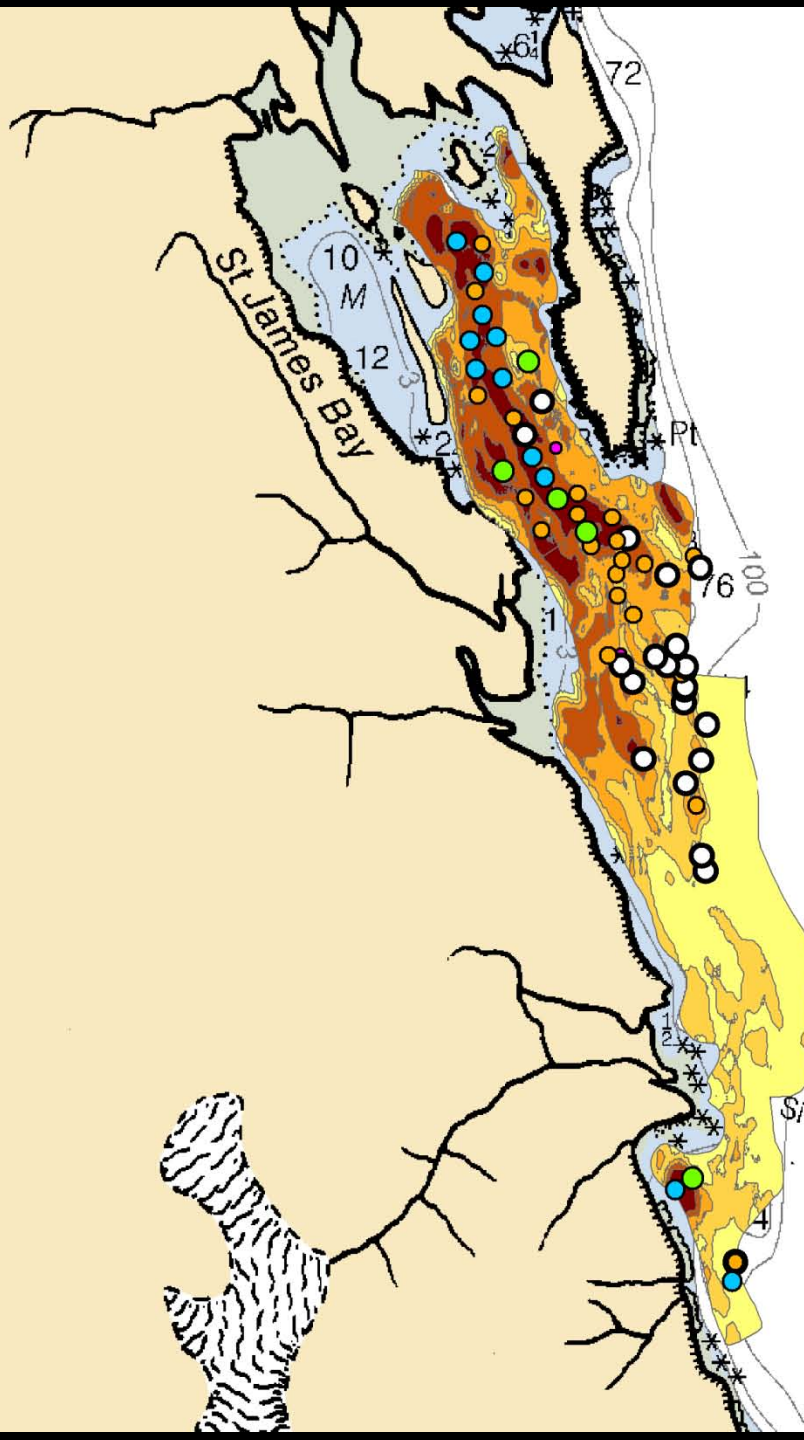
Caught and marked: 2,424

Recaptured: 209

With tags: 59 (29%)

N = 8,340

N = 5,300



Pybus Bay



Catch-Survey Analysis



45 pot lifts
+ all historic data

$N = 8,900$ legal crab





Mark

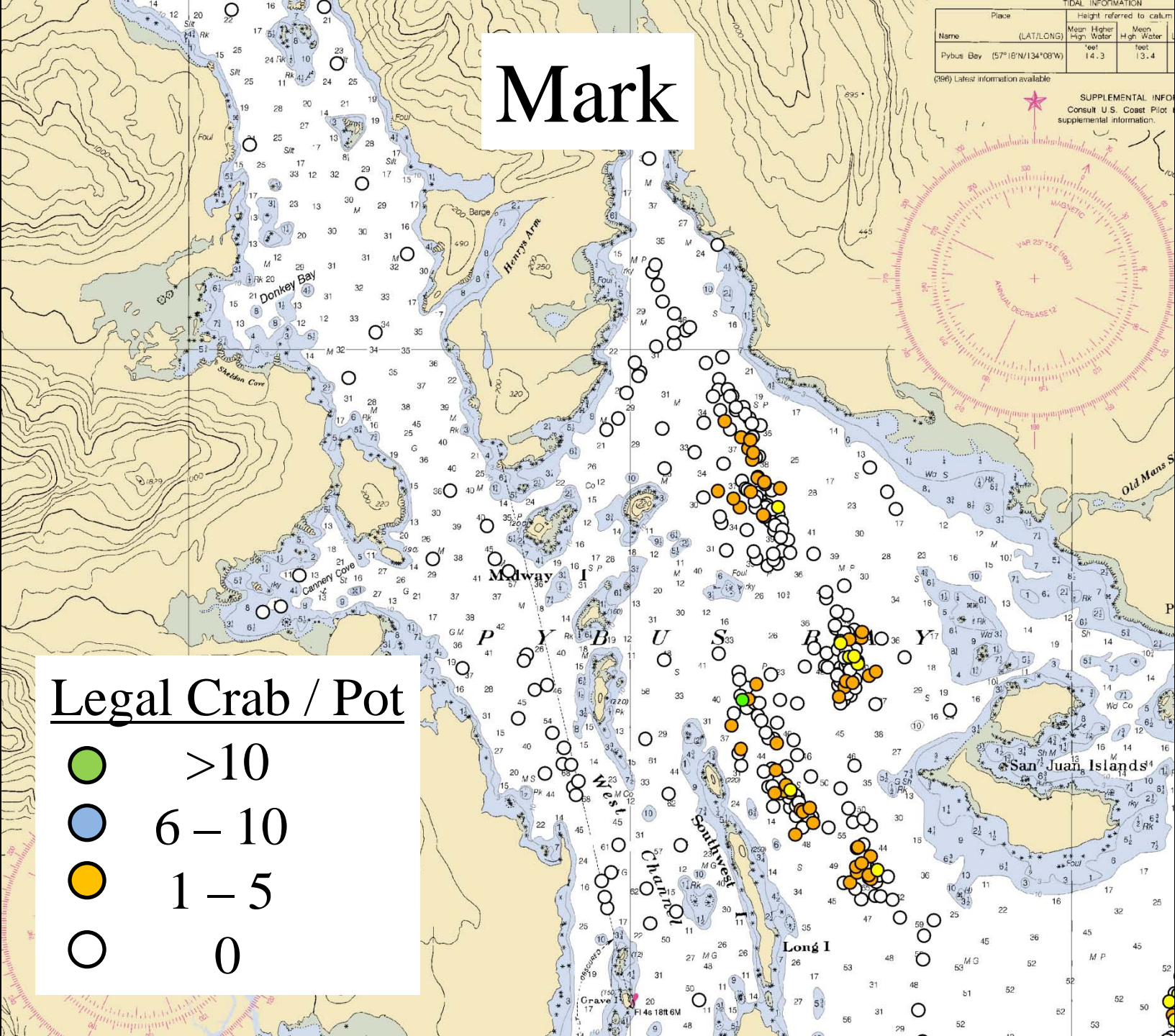
TIDAL INFORMATION			
Place	Height referred to datum	Mean Higher High Water	Mean High Water
Pybus Bay (57°N/134°03'W)	feet	14.3	13.4

(396) Latest information available

SUPPLEMENTAL INFO
Consult U.S. Coast Pilot
for supplemental information.

Legal Crab / Pot

-  >10
-  6 - 10
-  1 - 5
-  0

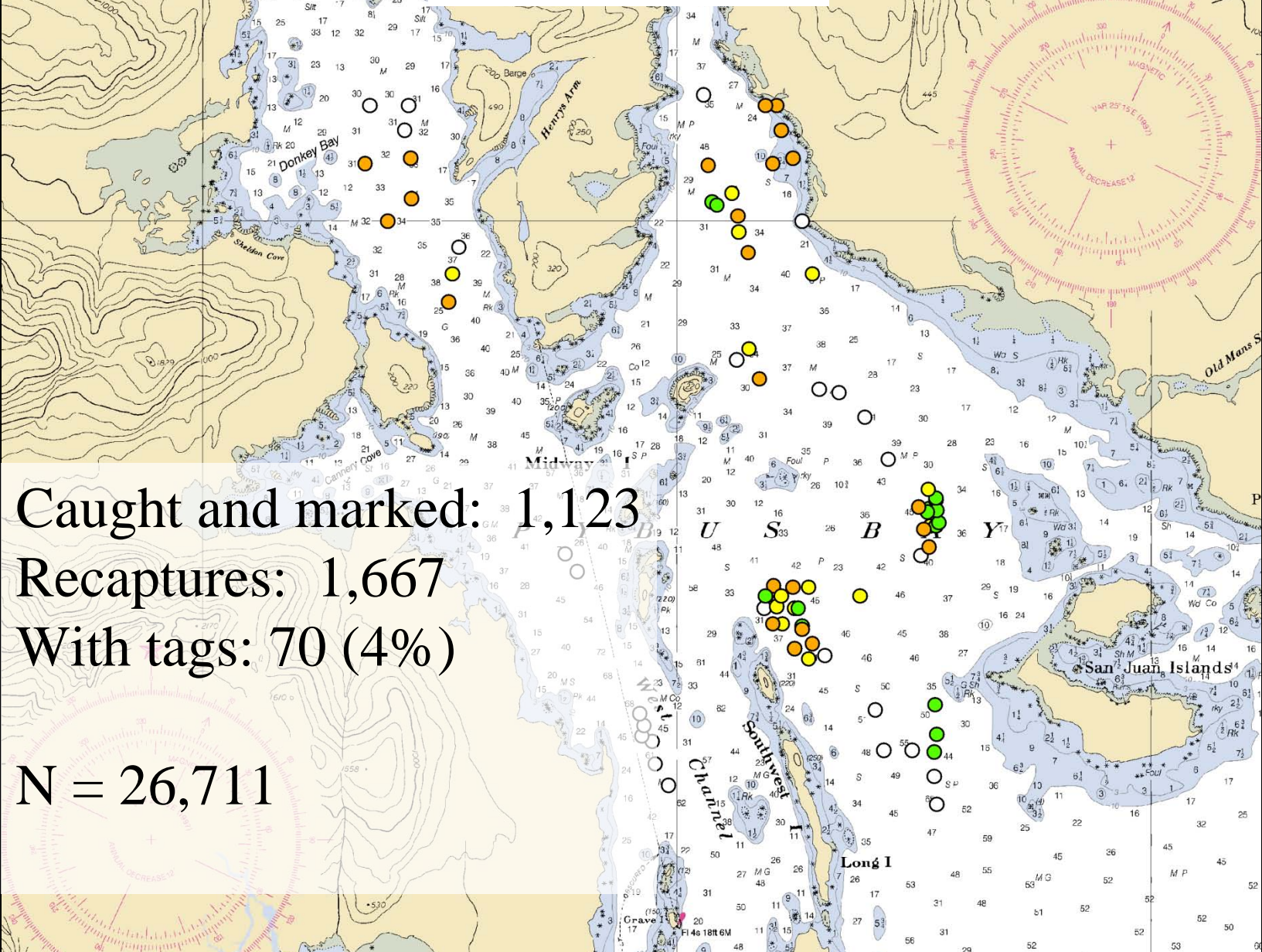


Recapture

TIDAL INFORMATION			
Place	Height referred to	datum	
Name	(LAT./LONG)	Mean Higher Water	Mean High Water
Pybus Bay	(57° 6' N/134° 03' W)	feet 14.3	feet 13.4

(39F) Latest information available

SUPPLEMENTAL INFO
Consult U.S. Coast Pilot
supplemental information.



Caught and marked: 1,123

Recaptures: 1,667

With tags: 70 (4%)

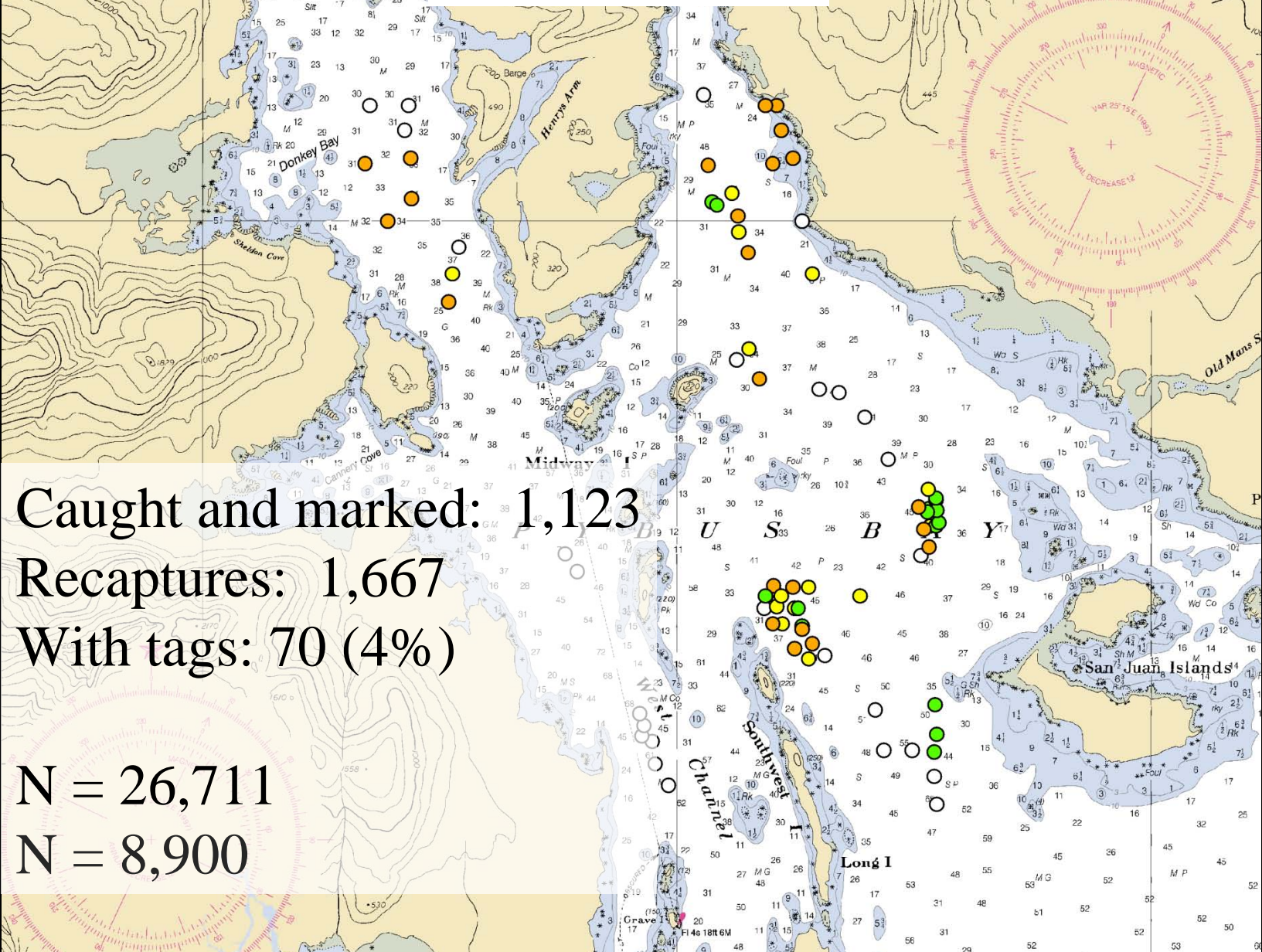
N = 26,711

Recapture

TIDAL INFORMATION			
Place	Height referred to datum	Mean Higher High Water	Mean High Water
Pybus Bay (57° 8' N / 134° 03' W)	feet	14.3	13.4

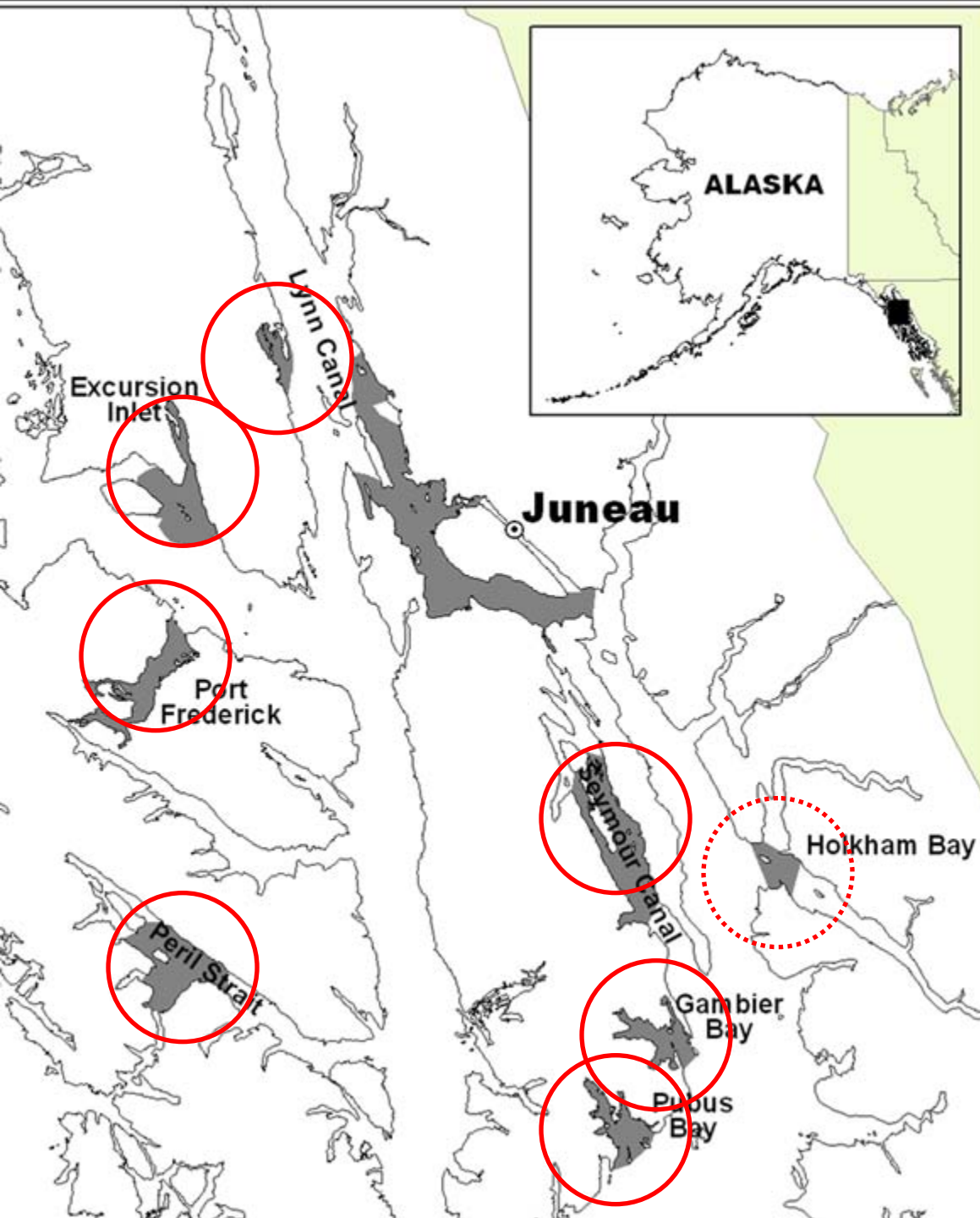
(39F) Latest information available

SUPPLEMENTAL INFO
Consult U.S. Coast Pilot
for supplemental information.



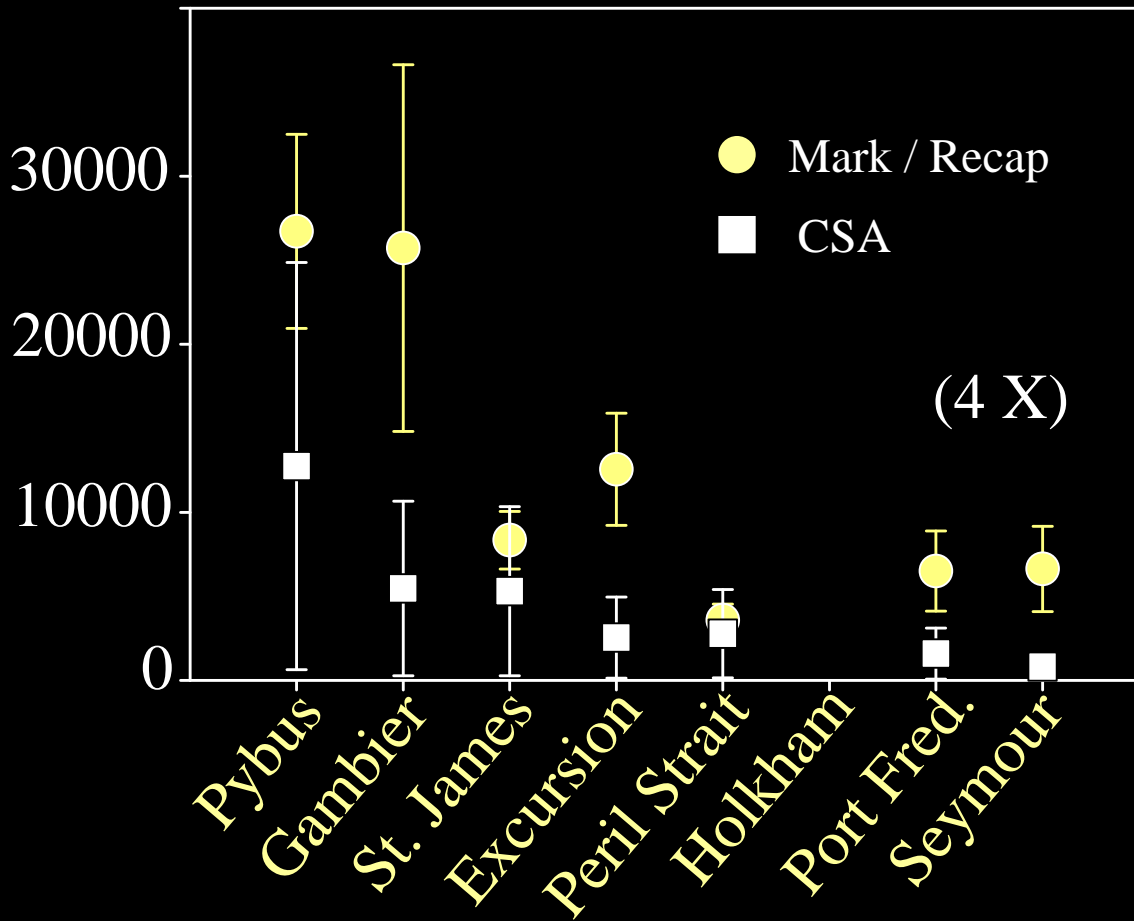
Caught and marked: 1,123
Recaptures: 1,667
With tags: 70 (4%)

N = 26,711
N = 8,900



Estimate Comparison

Abundance Estimates
(# of legal crab)

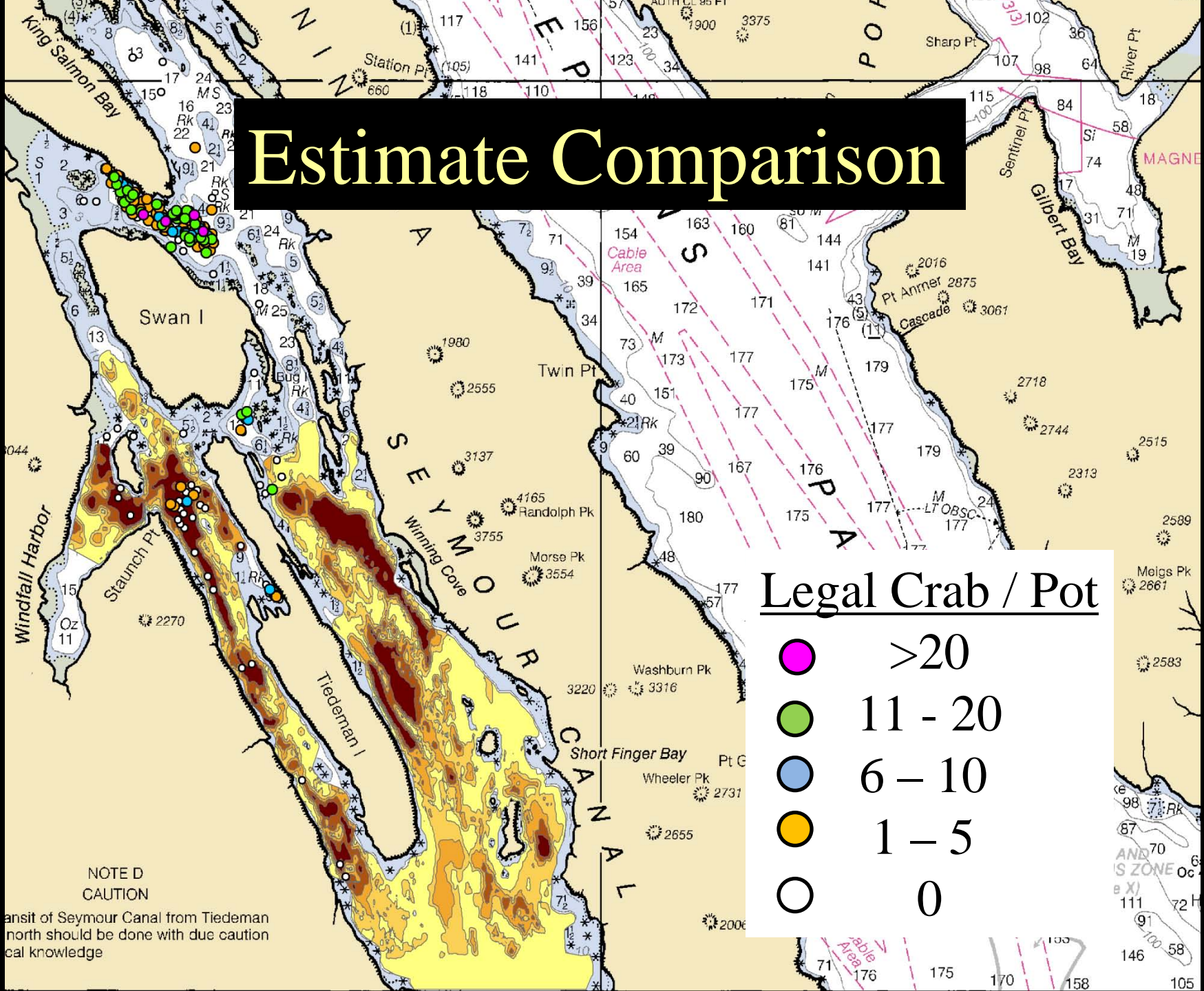


Estimate Comparison

But which estimate is “right”?

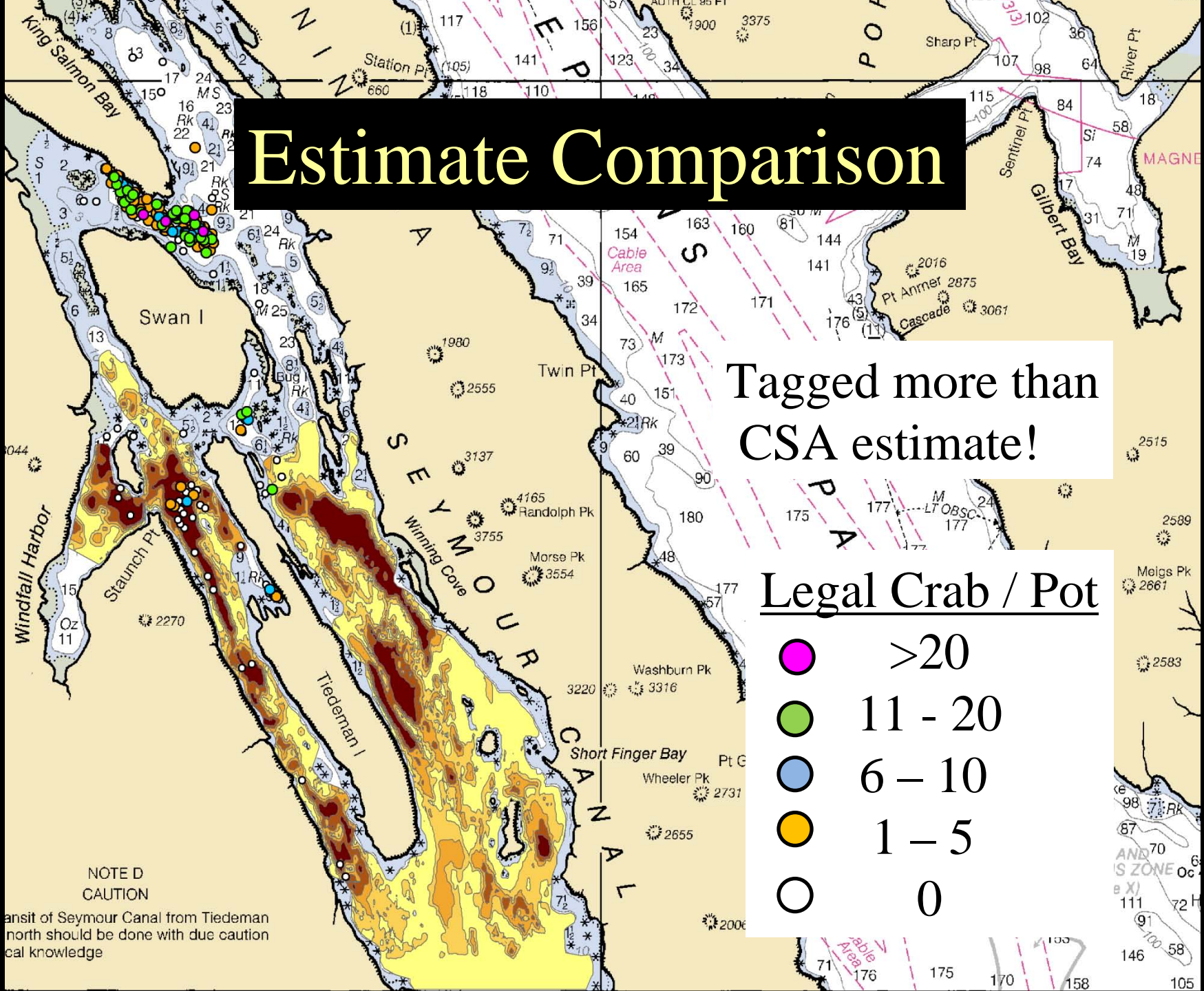
- 1) Mark / Recapture less likely to violate assumptions
- 2) Seymour Canal example

Estimate Comparison



NOTE D
CAUTION
Transit of Seymour Canal from Tiedeman north should be done with due caution and local knowledge

Estimate Comparison



Tagged more than CSA estimate!

Legal Crab / Pot

- >20
- 11 - 20
- 6 - 10
- 1 - 5
- 0

NOTE D
CAUTION
Transit of Seymour Canal from Tiedeman north should be done with due caution and local knowledge

Outline

1) Background

RKC in Southeast Alaska

2) Biomass Estimate Comparison

CSA, Mark/Recapture

3) Cost Effectiveness of Collaboration

Cost Comparison

Expenditures

	<u>M / R</u>	<u>CSA</u>
Vessels (fuel)	2	1
Personnel	8	7
<u>Effort (bait)</u>	<u>80</u>	<u>22</u>

Effort (potlifts/day) major difference

Cost Comparison

	<u>M / R</u>	<u>CSA</u>
Cost / Day	\$3848	\$3172
Effort / Day	49	20
<u>Cost / Effort</u>	<u>\$78</u>	<u>\$159</u>

50% less for Mark/Recapture

Cost Comparison

	<u>M / R</u>	<u>CSA</u>
<u>Cost / Day</u>	\$3848	\$3172
<u>Effort / Day</u>	49	20
<u>Cost / Effort</u>	\$78	\$159

Not cheap, but cost effective!

Conclusions

- 1) Mark/Recap > CSA for 7 Bays (be critical)
- 2) Collaborative research is cost effective
(not necessarily inexpensive)
- 3) Collaboration is good (but not perfect)
- 4) Good relationships provide additional
benefits (funds / habitat data)

Acknowledgements

Commercial Fleet

R. Littleton (Angjenl)
J. Jensen (Harvester)
Y. Nilsen (Aleutian Dream)
S. Savland (Chikamin)
J. Barry (Pillar Bay)
J. Kohlhase (Morgan Anne)
L. Norheim (Frigidland)
Randy Lanteigne (Icicle)
M. Erikson (AGS)
E. Norman (Taku Fisheries)
Julianne Curry (PVOA)

ADF&G staff

A. Messmer
Q. Smith
A. Olson
J. Stratman
S. Kelley
J. Meucci
T. Koeneman



58° 30'

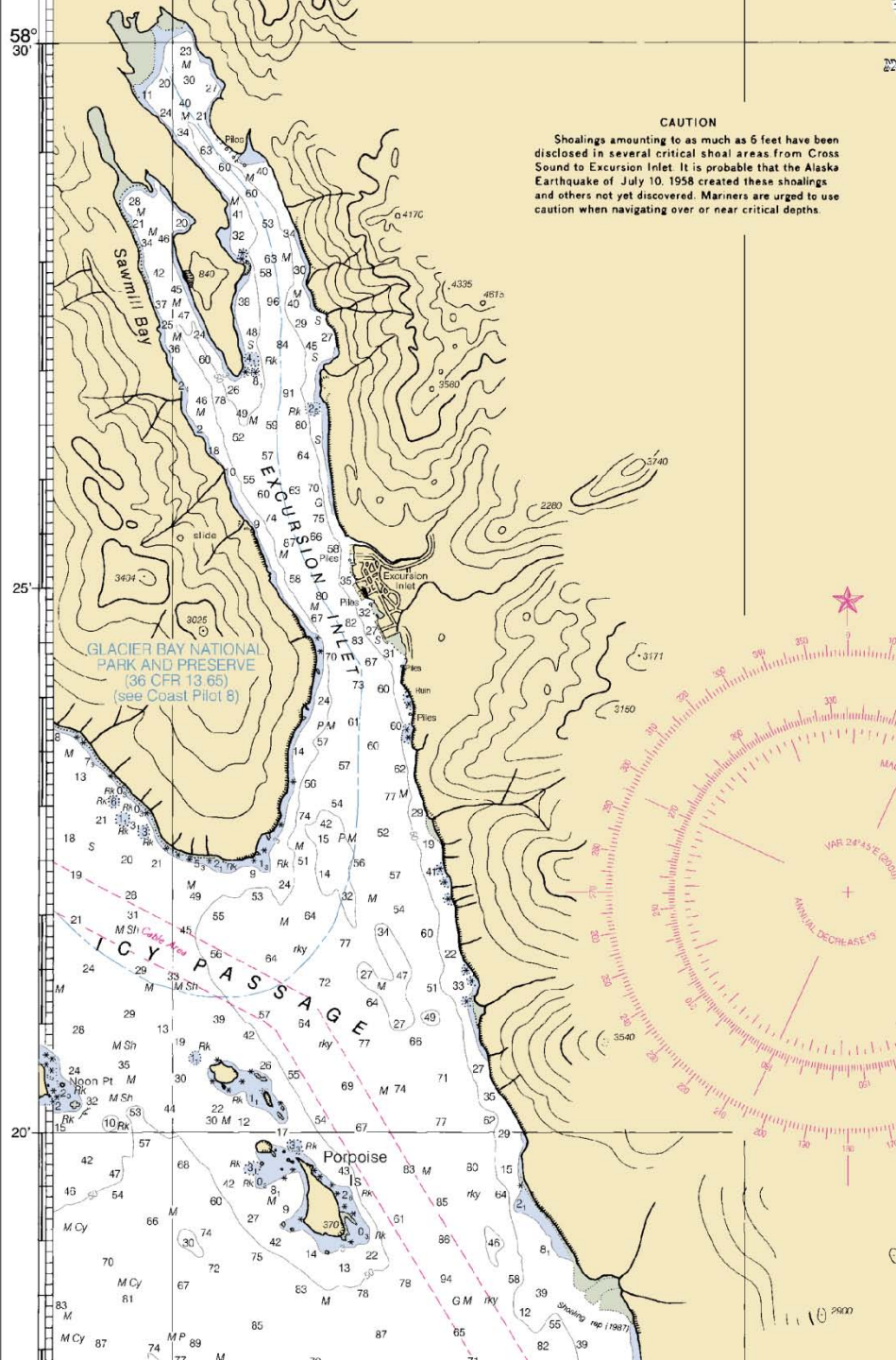
25'

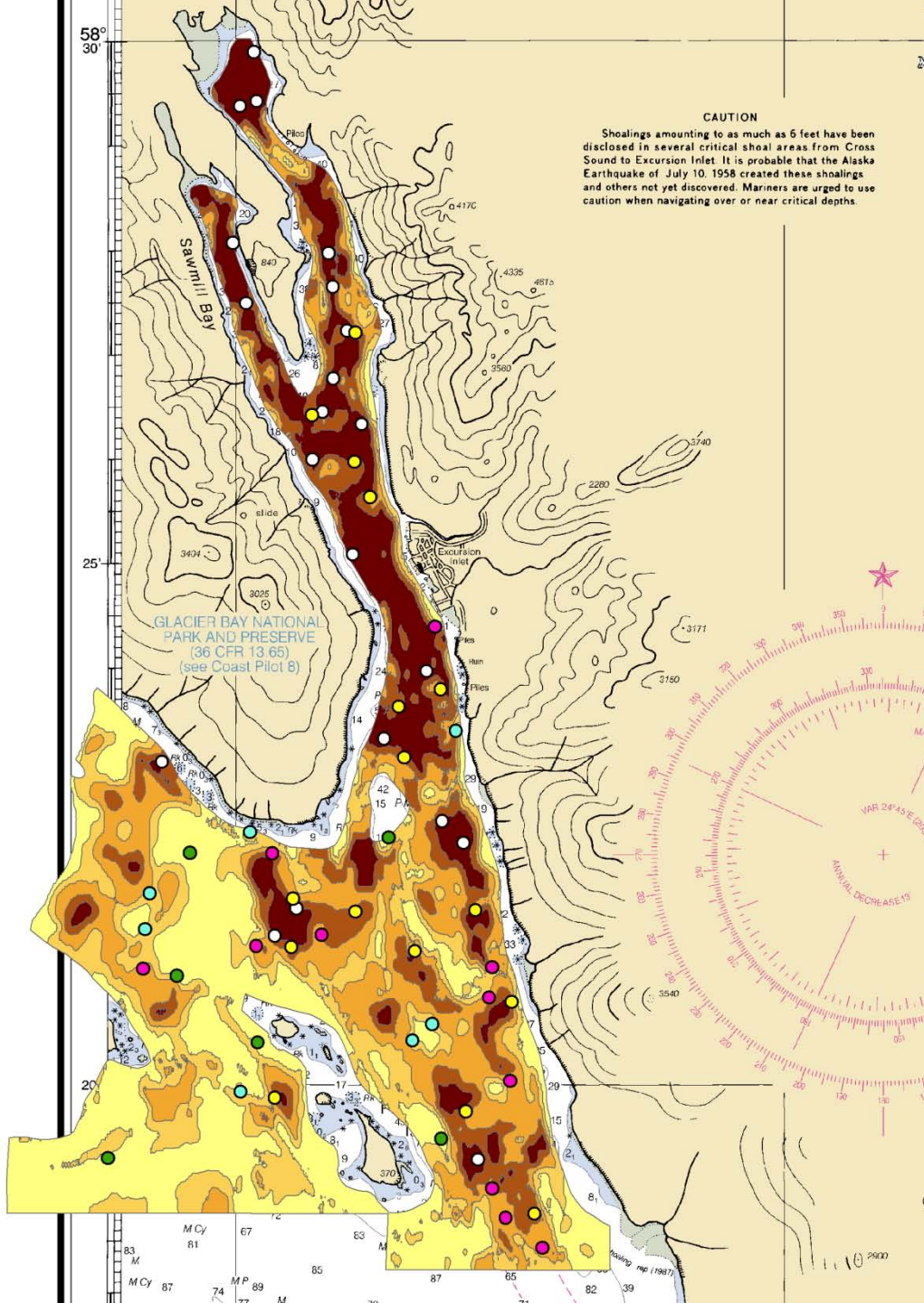
20'

CAUTION

Shoalings amounting to as much as 6 feet have been disclosed in several critical shoal areas from Cross Sound to Excursion Inlet. It is probable that the Alaska Earthquake of July 10, 1958 created these shoalings and others not yet discovered. Mariners are urged to use caution when navigating over or near critical depths.

Excursion Inlet

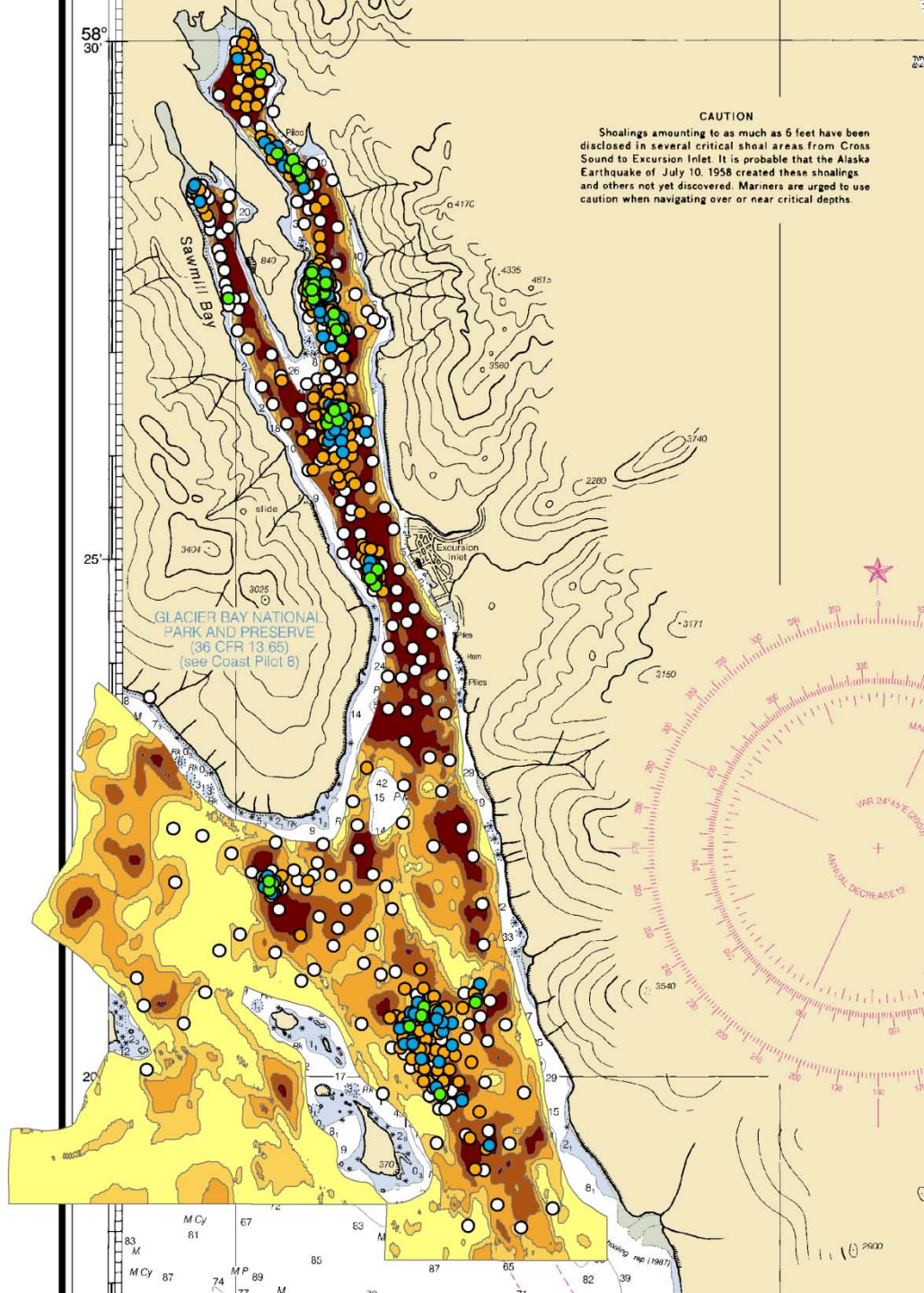




Catch-Survey

44 pot lifts
+ all historic data

N = 2,500 legal crab

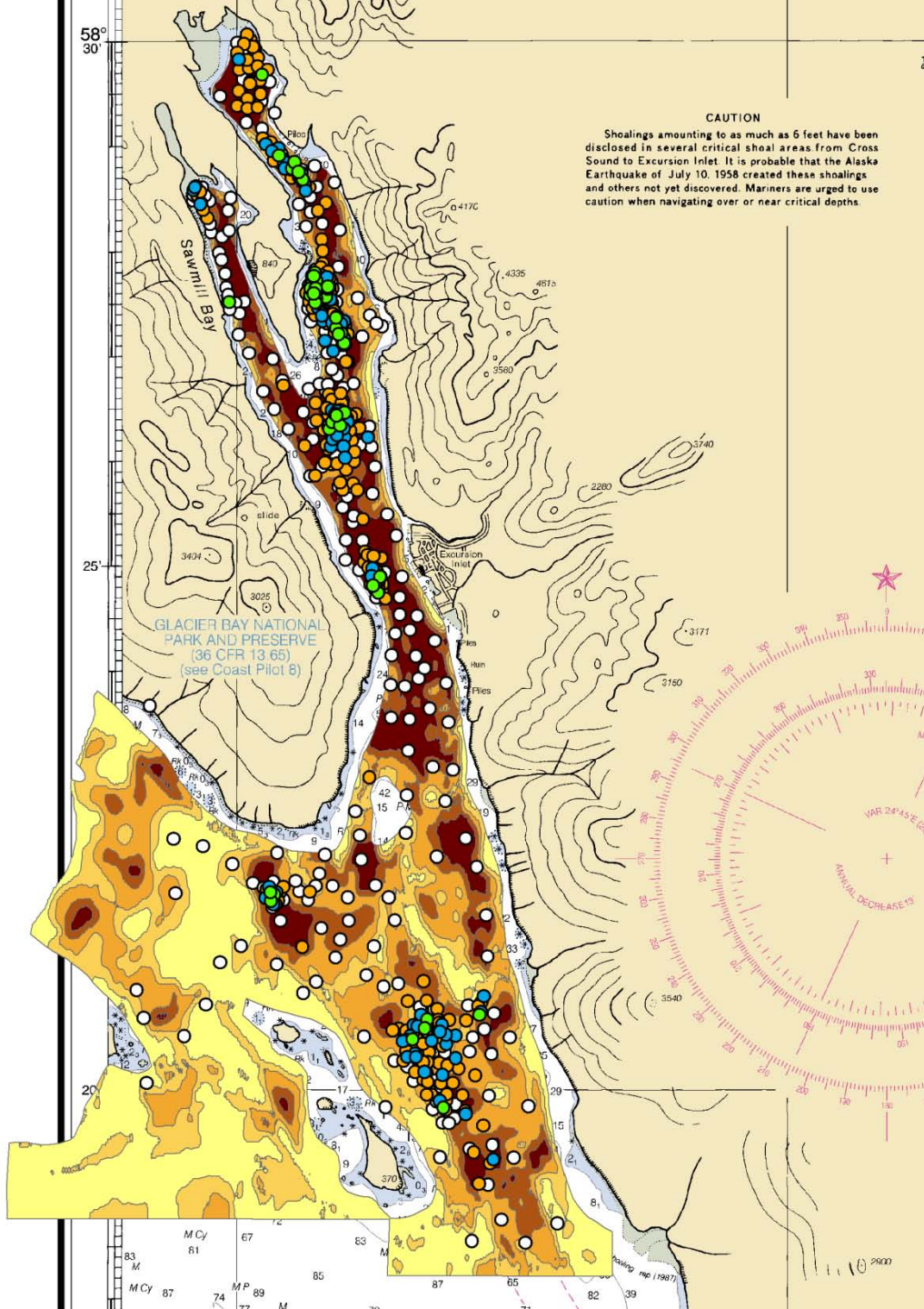


Mark

Legal Crab / Pot

- >10
- 6 – 10
- 1 – 5
- 0

Caught and marked: 1,690
 600 total potlifts
 (710 in 2003 fishery)



Mark/Recapture

Legal Crab / Pot

● >10

● 6 – 10

● 1 – 5

○ 0

Caught and marked: 1,690

Recaptures: 312

With tags: 42 (13%)

$N = 12,554$

What's next?

Are results consistent regionwide?
(4 areas left)

How will research be utilized?
(e.g., what do we do if CSA consistently
over/under-estimates)