

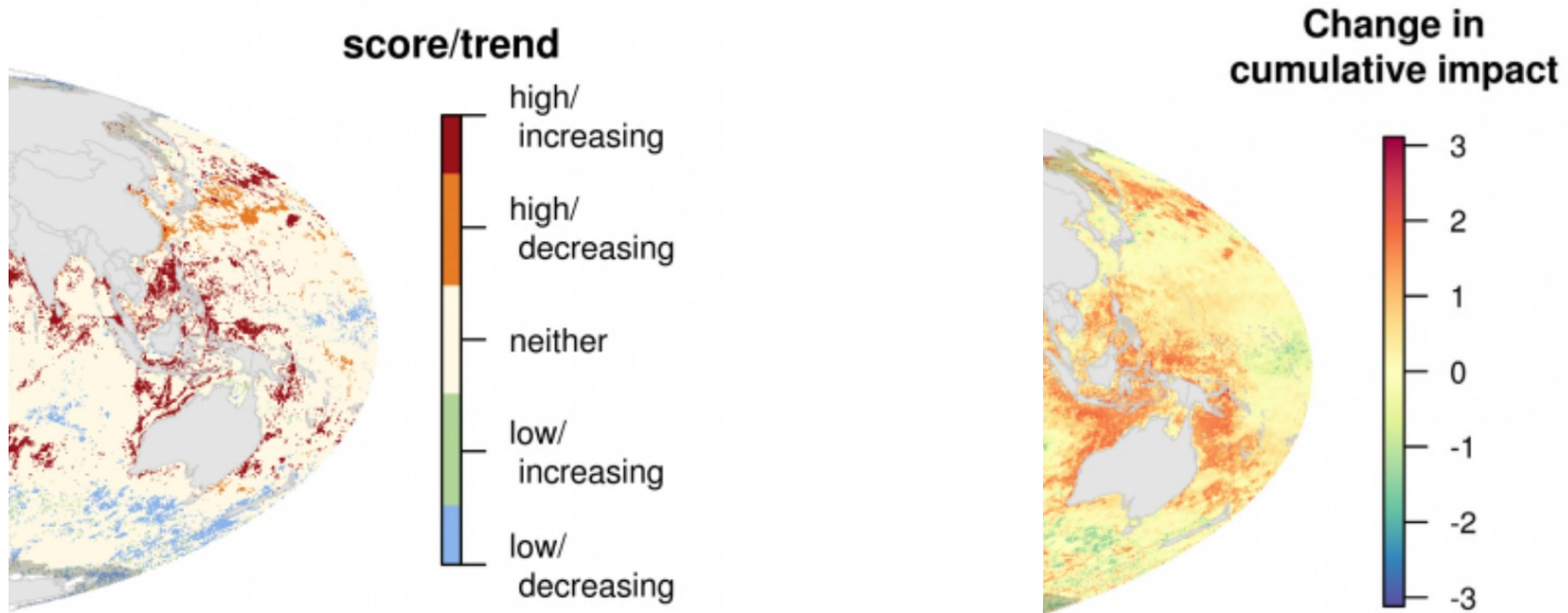
PICES: Public Health and Social Aspects.

July 4, 2023

Professor Charles Trick
Director, Institute for Health and Wellbeing

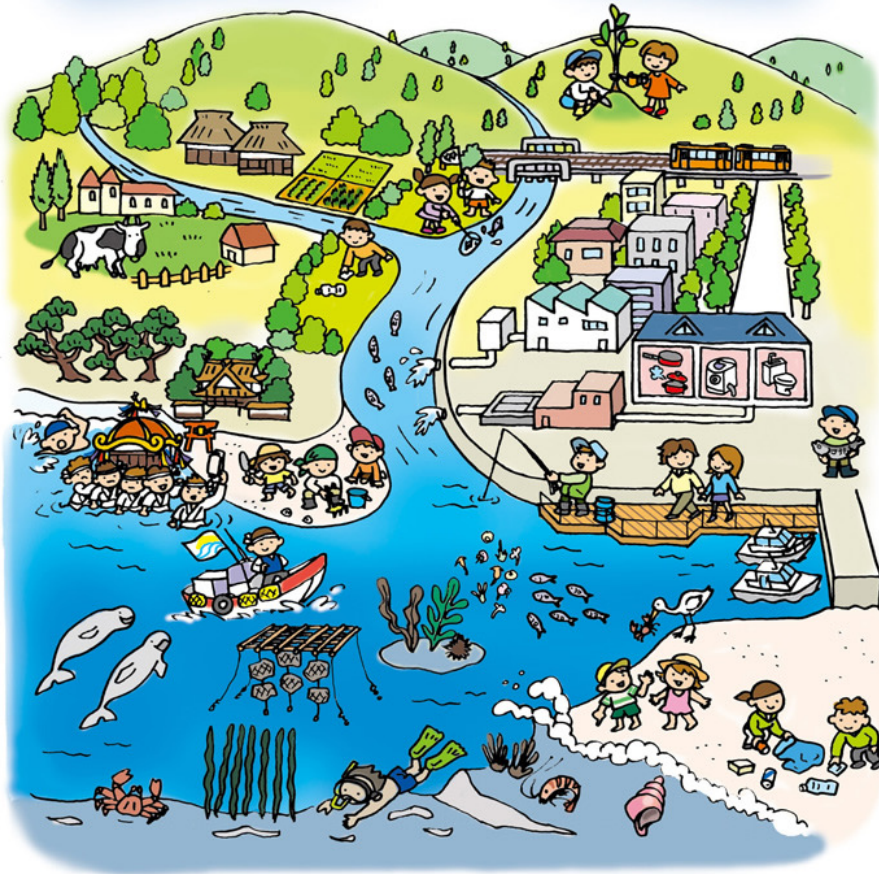
The World's View of Indonesian Fisheries and water quality trends

These maps depict changes in global cumulative human impacts on the ocean from 2008 to 2013.



The World's View of Indonesian Fisheries and water quality trends

NOT focussed on human impacts on the ocean but on the changes in ocean sustainability and seafood safety.



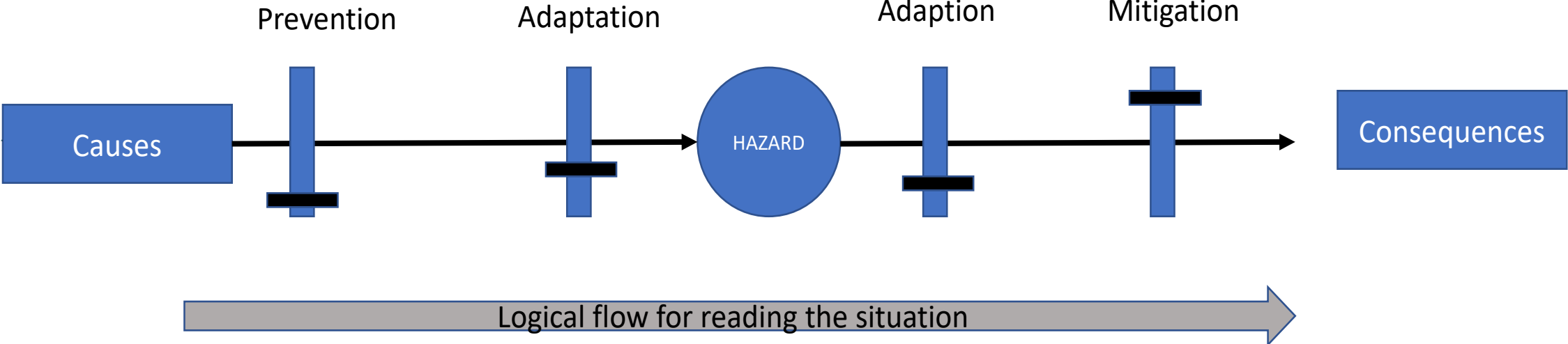
- In Japanese, "SATO" means the area where people live, and "UMI" means the sea
- Sato-umi is the quality of community life and the culture based on exchanges through fisheries and the distribution of products.
- It is an area which includes both Nature and human-beings, as well as an area in which both high biological productivity and biodiversity are expected.

3 “E” Model for Risk to Human Health

ENVIRONMENT

EXPOSURE

EFFECTS

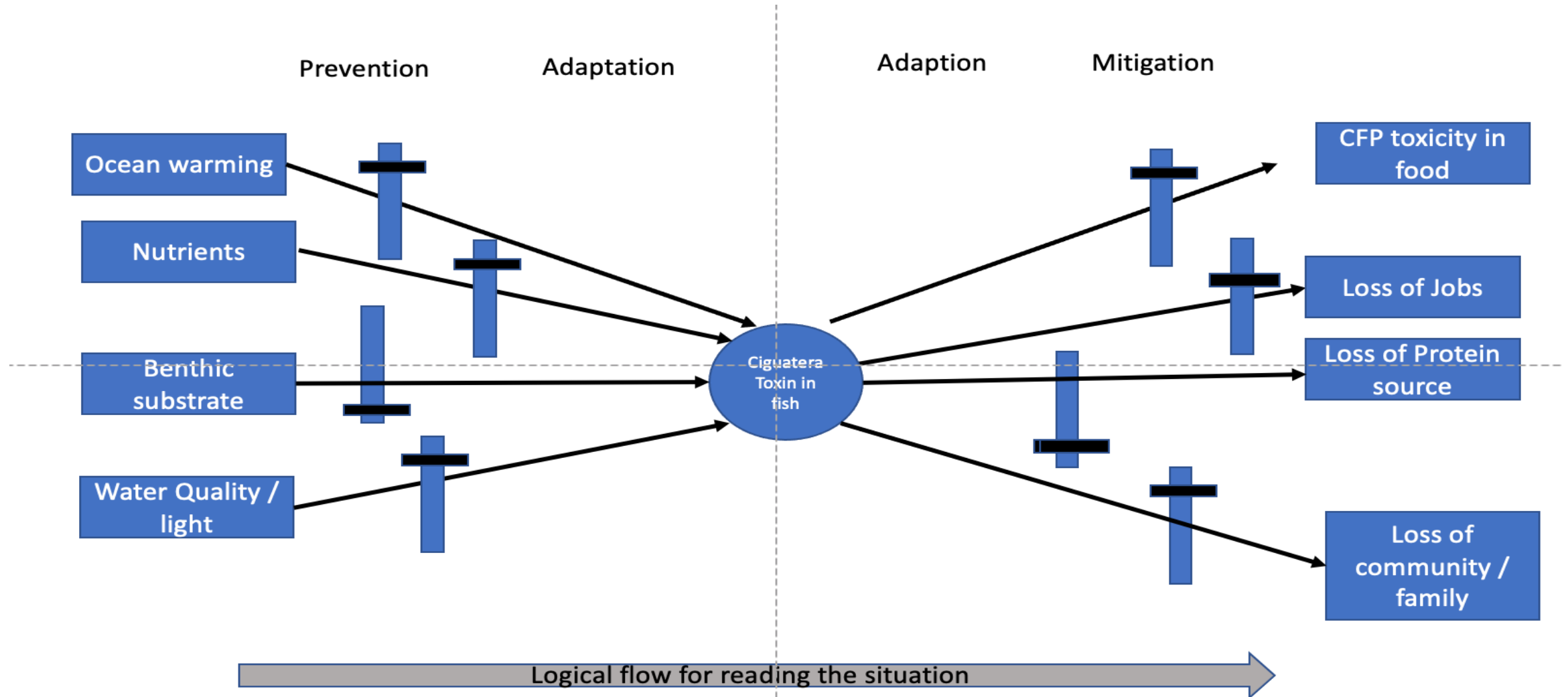


Bow-Tie Model of Risk to Human Health

ENVIRONMENT

EXPOSURE

EFFECTS



THIS PICES PROGRAM & the Bow-Tie Model of Risk to Human Health

ENVIRONMENT

EXPOSURE

EFFECTS

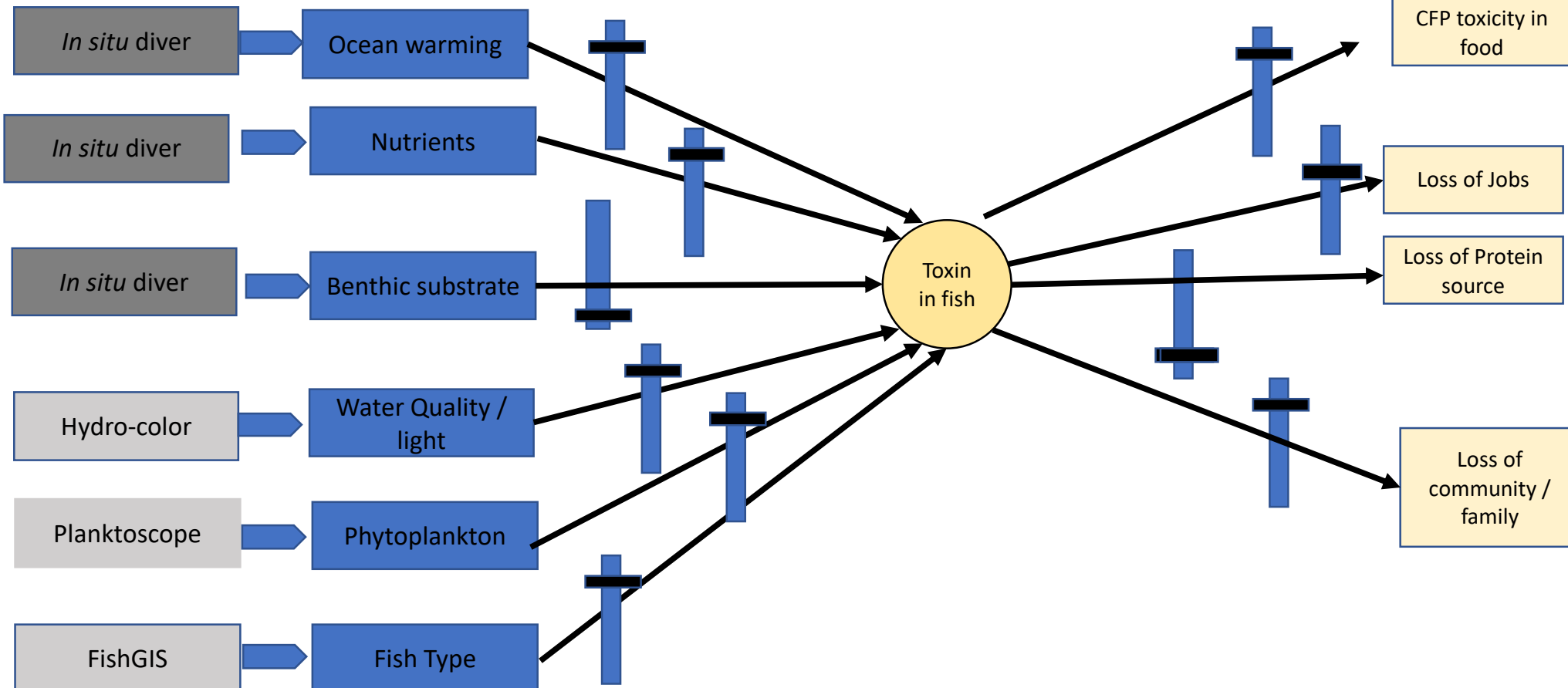
PICES/MAFF
Assessment

Prevention

Adaptation

Adaption

Mitigation



Key words for the PICES Project

- Environment Quality
- Temperature
- Productivity
- Turbidity / Light

- Fish Biomass
- Fish Biodiversity
- Fish Quality
- “Fishing Effort”

- Best product
- Quality of protein
- Risk to economic food chain
- Contaminants
- Sea Food toxins

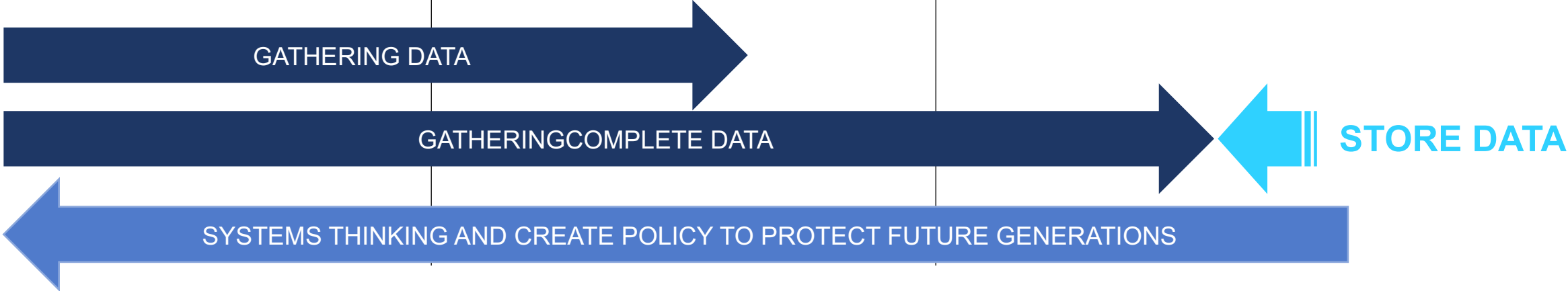


Key words for the PICES Project

- Environment Quality
- Temperature
- Productivity
- Turbidity / Light

- Fish Biomass
- Fish Biodiversity
- Fish Quality
- “Fishing Effort”

- Best product
- Quality of protein
- Risk to economic food chain
- Contaminants
- Sea Food toxins



TAKE HOME MESSAGE – FINISH THE CYCLE.

- Systems thinkers
- Curiosity-driven researchers ready to challenge the hypothesis
- Someone who thinks analytically
- Yes! Think about future generations.
- Find the motivation in Public Health and Social wellbeing data.
- Create a “new generation of scientists that “promote[s] the progress of science” and “advance[s] the health, prosperity, and welfare of communities or nations.”

